

WEATHER

	Min.	Max.	Precip.
Thursday, Feb. 16	0	23	Trace
Friday, Feb. 17	2	23	Trace
Saturday, Feb. 18	3	23	0.00
Sunday, Feb. 19	0	23	0.00
Monday, Feb. 20	3	24	0.00
Tuesday, Feb. 21	5	25	0.01
Wednesday, Feb. 22	5	28	0.00

ONE HUNDRED-EIGHTH YEAR—No. 37

14 Pages This Week

Plus 4-Page Supplement

CHELSEA, MICHIGAN, THURSDAY, FEBRUARY 23, 1978

15c per copy

SUBSCRIPTION: \$6.00 PER YEAR

The Chelsea Standard

QUOTE

"If a nation values anything more than freedom, it will lose its freedom; and the irony of it is that if it is comfort or money that it values more, it will lose that too."
—William Somerset Maugham.

Lyndon Board Seeks To Remove Dogs

If the Lyndon Township Board has its way, an illegally-kept dog kennel on the Charles Baum property, 9730 Beeman Rd., Grass Lake, will cease to function within a week to 10 days.

This was the upshot of a meeting Tuesday between board members and some 45 township residents who presented the board with petitions signed by 174 township residents calling for immediate removal of all but three dogs housed at the kennel in accordance with a decision reached Dec. 2 by Circuit Court Judge Edward D. Deake.

After an hour-long discussion, board members voted unanimously to prepare and file the necessary papers for further "orders and writs" to be signed by Judge Deake. These papers, when signed, will authorize the county to legally enter Baum's premises and remove the dogs which have caused a two-year controversy in the township.

According to Mrs. Clyde Myers, a Lyndon township resident spearheading the protest against Baum's continued kennel operations, it will take at least a week for the papers to be processed.

Trouble over the dogs began in March, 1976, with a complaint against Baum for maintaining a public nuisance with his kennel operations. When Baum ignored the complaint, the Lyndon Township Board filed a civil suit against Baum on the grounds township ordinance requires a 10-acre parcel of land for a dog kennel and Baum's property was under 10 acres.

In a non-jury trial last August that ended with Judge Deake's Dec. 2 ruling that Baum's dog activities constitute a nuisance, Baum was formally enjoined from using his land on Beeman Rd. as a dog kennel, and was ordered to reimburse the Washtenaw County Humane Society for destruction of 85 dogs he had brought to Washtenaw county from Jackson after he was convicted of cruelty to animals in Jackson District Court.

The 85 dogs had been seized by the humane society and destroyed following a court ruling handed down by Circuit Court Judge William F. Ager, Jr., in April of 1976.

After the 85 dogs were carted (Continued on page four)

Fair Board Studies Possible Relocation

The Feb. 16 meeting of the Chelsea Community Fair Board was called to order by President Lloyd Grau.

In addition to Grau, officers present were Kay Poljan, treasurer; Ruth Leach, fair secretary; and Earl Heller, fair manager.

Directors in attendance included Harold Gross, Harold Trinkle, Charles Koenn, Charles Stadish, Jerry Herrick, Archie Bradbury, Frank Repton, Reuben Lesser, Jr., Frank Sweeney, Robert Heller, Joe Merkel, III, and Art Steinaway. Absent were Jerry Heydlauff, Ed Keizer, Keith Bradbury, John Klink, Ralph McCalla and Dick Poljan.

Guests present included John Wellnitz, Pat Merkel, Robert Ponte and Bob Smith. Ponte and Smith attended representing the Chelsea Jaycees and discussed nominations with the Fair Board for the Jaycees' Distinguished Service Award. No nominations were made at the meeting.

Richard Bollinger was nominated and appointed to complete another board member's term.

Entertainment for the 1978 Chelsea Community Fair was then discussed with emphasis given to the annual demolition derby. It was decided to conduct the derby two consecutive evenings during the fair, on Tuesday and Wednesday.

A serious discussion followed with regard to selling the present fairgrounds and relocating elsewhere. In debate on the proposal, it was pointed out that for several years the Fair Board has tried unsuccessfully to rezone the fairgrounds from an agricultural district to a fair district. Each time, the Village of Chelsea has denied the Fair Board's rezoning request.

It was further stated by board members in the 40 and 50 age groups that some area fairs in the past had lost their property and had been forced to move their fair location because of improper zoning.

The combination of those two factors have been causing concern to local Fair Board members for some time.

Independents Choose Unopposed Ticket

The Independent Party ticket for the March 20 village election in Chelsea will contain the names of several newcomers to the political arena as well as the names of four incumbent officers seeking re-election. All will run unopposed.

Candidates for the offices of president, treasurer, trustees, library Board trustees, and assessor were nominated Monday,

Feb. 13, during the annual village caucus in the Municipal Building.

From a population of nearly 4,000, some 30 residents attended the hour-long session. Presiding chairman at the caucus was George Palmer, while village administrator Frederick Weber assisted as secretary.

(Continued on page three)



DIVISION I WINNERS: This group of Beach Middle school 8th graders was at the core of Chelsea's success in the District 12 Junior High Solo and Ensemble Festival at Monroe High school last Saturday. All musicians in the group played in various band ensembles that were all awarded a Division I rating in the annual competition. Front row, from left, are Dan Kleis, alto sax; Phil Powers, alto sax; and Zachery Smith, trumpet. Second row, from left, are Chuck Dalton, baritone sax; Diane Bareis, french horn; Cinda Thornton, french horn; and Maggie Sweet, french horn. Standing in the back row, from left, are Karen Miller, saxophone; David Cooley, tenor sax; Mike Stebelton, trumpet; Warrington Parker, trumpet; Jeff Rowe, trumpet; Linda Dorr, flute; and Kathy Waldyke, flute.

Band Concert Scheduled For March 2

Members of Chelsea's 7th, 8th, and 9th-grade bands, as well as the symphony band members, will present their annual Mid-Winter Concert Thursday, March 2, 7:30 p.m., in the Chelsea High school auditorium.

A variety of music will be performed, including both popular and classical numbers, and selections will range in difficulty from simple to extremely complex compositions.

Directing the 7th and 8th grade musicians will be Warren Mayer, while Steve Bergmann will direct the 9th grade and Symphony bands.

The concert is open to the public and no admission will be charged.

Trades Day Slated Feb. 28 At High School

Chelsea High school Guidance Department is presenting Trades Day on Feb. 28, 11 a.m. at the high school. The Washtenaw County Local Building Trades Board of Directors is sending four speakers to give hour programs in the areas of carpentry, electricity, plumbing, and brick-laying.

These speakers will explain job duties, apprenticeship programs, what high school courses are needed. (Continued on page six)

Junior High Musicians Score in District Solo, Ensemble Festival

Beach Middle school musicians returned from last Saturday's District 12 Junior High Solo and Ensemble Festival at Monroe High school with 10 Division I ratings and eight Division II ratings for band entries, five Division I ratings and six Division II ratings for piano entries, and one Division I rating and seven Division II ratings for orchestra entries.

Junior High band director Warren Mayer noted that no Division I ratings were received and praised his students for their attitude, effort, and accomplishments at the festival.

Band soloists at Beach receiving I's were David Cooley on tenor saxophone, Zachery Smith on trumpet, and David Kleis on multiple percussion.

Division I rated ensembles included a flute trio composed of 7th graders Lisa Hurd, Kathy Degener and Tracy Borton; a saxophone trio composed of 8th graders Chuck Dalton, Phil Powers and Karen Miller; a trumpet quartet composed of 8th graders Zachery Smith, Jeff Rowe, Warrington Parker and Mike Stebelton; and a woodwind trio composed of 7th graders Kathy Degener (flute), Melonie Lee (oboe), and Marie Sullivan (clarinet).

Also earning Division I ratings were a french horn trio composed of 8th graders Diane Bareis, Cinda Thornton and Maggie Sweet; a saxophone quartet composed of 7th graders Phil Powers, (alto sax), Daniel Kleis (alto sax), David Cooley (tenor sax), and Chuck Dalton (baritone sax); and a flute duo composed of 8th graders Kathy Waldyke and Linda Dorr.

Band soloists receiving Division II ratings were Melonie Lee on oboe, Todd Sprague on multiple percussion, Brent Martin on trombone, and Beth Heller on flute.

Division II ensembles included a flute duo composed of 8th graders Allison Koepf and Danny Bohl; a flute trio composed of 7th graders Sharon Buckenberger, Nancy Weir and Jean Folson; a saxophone quartet composed of 7th graders Kimberly Boyd (alto sax), Barry Newkirk (alto sax), Mark Smith (tenor sax), and Duane Branch (baritone sax);

and a snare drum duo composed of 8th graders Todd Sprague and Doug Henson.

Among Beach school's piano entries, Division I ratings were awarded to Katherine Ullman, Marie Sullivan, Diane Bareis, Karla Troutman and Cinda Thornton, while receiving Division II ratings were Chris Johnson, Mary Anderson, Beth Heller, Marlene Williams, Kimberly Boyd and Nancy Heller.

In order to enter the piano solo event at the festival, students were required to be either band or orchestra members at their respective schools.

Chelsea's top-rated orchestra entry was a cello duo composed of Russell Harris and Deann Colvia. Local orchestra entries receiving Division II ratings were violin solos by Laura Hines, Neal Vorus, Jeff Cox, and Katherine Ullman; a string quartet composed of Margie Peterson, Laura Hines, Paul Schumann and Diane Moller; a violin trio composed of Kristin Thomas, Robbie Friday and Jeff Koepf; and a violin and Duane Branch (baritone sax);

and a snare drum duo composed of 8th graders Todd Sprague and Doug Henson.

Among Beach school's piano entries, Division I ratings were awarded to Katherine Ullman, Marie Sullivan, Diane Bareis, Karla Troutman and Cinda Thornton, while receiving Division II ratings were Chris Johnson, Mary Anderson, Beth Heller, Marlene Williams, Kimberly Boyd and Nancy Heller.

In order to enter the piano solo event at the festival, students were required to be either band or orchestra members at their respective schools.

Chelsea's top-rated orchestra entry was a cello duo composed of Russell Harris and Deann Colvia. Local orchestra entries receiving Division II ratings were violin solos by Laura Hines, Neal Vorus, Jeff Cox, and Katherine Ullman; a string quartet composed of Margie Peterson, Laura Hines, Paul Schumann and Diane Moller; a violin trio composed of Kristin Thomas, Robbie Friday and Jeff Koepf; and a violin and Duane Branch (baritone sax);

and a snare drum duo composed of 8th graders Todd Sprague and Doug Henson.

All 27 Entries in High School District Festival Win Awards

Chelsea High school musicians were forced to wait two weeks longer than expected to perform in the annual District 12 High School Solo and Ensemble Festival Feb. 11 after the event was snowed out Jan. 28, but other than some inevitable cancellations because of the week-end change, the students were "very successful" in their showing, according to band director Steve Bergmann.

The musicians collected a total of 13 Division I ratings, 13 Division II ratings, and only one Division III rating in the 27 events entered.

Receiving I's were a brass octet composed of Dave Morris, Drew Sprague, Jim Wiedmeyer, Debbie Koepf, Dave Waldyke, Mark Shippy, Keith Stillion and Mark Snyder; trumpet solos by Drew Sprague and Debbie Koepf; flute solos by Cindy Wolter, Ann O'Hagen and Tracy Schumann; and a clarinet solo by Kathy Slater.

Also with I ratings were a french horn solo by Mark Shippy; a trombone solo by Jim Wiedmeyer; a brass sextet composed of Chris Johnson, Becky Watson, Sue Prinzling, Mike Ward, Dave Baldwin and Dan DeSmyther; a trumpet trio composed of Don Watson, Frank Kornexel and Drew Sprague; a clarinet trio composed of Julie Botsford, Kathy Slater and Carolyn Schardein; and a flute quartet composed of Cindy Wolter, Gail Beyer, Tracy Schumann and Ann O'Hagen.

Division II ratings were awarded to a piano solo by Julie Botsford; a flute-clarinet duo by Ellen Bury and Cindy Klobuchar; an oboe solo by Lori Van Riper; clarinet solos by Michele Alexander and Cindy Klobuchar; trombone solos by Scott Beyer, Eric Wiedmeyer and Pat Powers; and a woodwind quintet composed of Lori Van Riper, Jeanette Morris, Molly Bacon, Carolyn Schardein and Janis Proctor.

Others receiving II's were a trombone duo by Pat Powers and Eric Wiedmeyer; a saxophone duo by Tom Young and Judy Janes; a saxophone duo by Tom Young and Brian Herrick; a flute solo by Donna Finkbeiner; and a

clarinet duo by Becky Bentley and Linda Durgan.

A flute duo played by Dawn McDowell and Kathy Honbaum was given a Division III rating by judges at the festival.

All local musicians with Division I ratings are eligible to enter the State Solo and Ensemble Festival, while all soloists in the 10th grade or higher are eligible to perform for proficiency ratings in April.

In the proficiency competition, students will be individually rated on their ability to sight read, to perform prepared scales and etudes, and to perform a prepared solo.

Both Young and Brown wrapped up the 1977-78 wrestling season with fine individual records. Young came up with a 37-2 mark for the year, and Brown finished 30-6.

"These two senior wrestlers will be hard to replace next year," Coach Bareis said.

While Brown was able to overcome some loss of strength as a result of his recent illness, Young was less fortunate in that he won only his first match. Unable to maintain his usual strength, he succumbed to his next two opponents and was eliminated from the tournament.

Both Young and Brown wrapped up the 1977-78 wrestling season with fine individual records. Young came up with a 37-2 mark for the year, and Brown finished 30-6.

"These two senior wrestlers will be hard to replace next year," Coach Bareis said.

Cagers Down Lincoln With 60-Point Half

Friday Game at Dexter Closes Season, District Tourney Next

It could have turned into a meeting of David and Goliath last Friday when Chelsea's varsity basketball squad traveled to Ypsilanti to face a winless Lincoln team that surged to a 22-12 lead over the Bulldogs early in the second quarter.

But instead, Chelsea put together a record 60-point second half enroute to an 86-52 conference win over the Railsplitters to keep the underdog tale of all time confined to the annals of ancient history.

Shooting 62 percent from the field in the first quarter, Lincoln rose to a 16-10 lead over the Bulldogs, and then steamed to the 22-12 advantage two minutes into the second period.

In a struggle to combat their hot-shooting rivals, the Bulldogs launched a comeback that narrowed the scoring gap to 26-28 at half-time, but Lincoln still held the lead.

At this point, Chelsea Coach Robin Raymond informed his players that if they could stay close to Lincoln until the Railsplitters cooled off, the Bulldogs could emerge from the contest with a victory.

With that philosophy, Chelsea intensified its defensive press in the second half to force more Lincoln turnovers and mistakes. And, as it turned out, the Bulldogs went up, 54-40, over their opposition at the end of three quarters.

Scoring for Chelsea in the third were Marc Feeney with 10 points, Dave Schrotenboer with 9, and Charlie Bridges with 5.

After outscoring Lincoln, 28-12, in the third period, the Bulldogs intensified their momentum in the fourth and outscored the Railsplitters, 32-12. Mike Machesky, who came off the bench to score 8 points for the Bulldogs in the game, contributing all 8 points in the final two minutes of the quarter.

Other outstanding scoring efforts made in the fourth came from Jesse Coburn with 7 points and Charlie Bridges with 5.

Adding to Chelsea's swell of power in the second half were the injuries of two Lincoln starters. Bill Hailes suffered an ankle injury early in the half and he was soon joined on the bench by teammate Dwayne Newton who suffered a chest injury.

For their third consecutive time, the Bulldogs ran the entire time they were on the court to record their third consecutive win.

"We're a better team when we run than when we slow down a game," Coach Raymond reported. He added that Lincoln had improved tremendously since the

team's first match with Chelsea this season, but said it would be unusual for a team to maintain the hot start Lincoln came up with Friday throughout a contest.

Dave Schrotenboer paced Chelsea with 18 points in the game, followed by Charlie Bridges with 16 points, Marc Feeney also with 16, Randy Harris with 10 points, Jesse Coburn also with 10 points, and Mike Machesky with 8 points.

"With five players in double figures we had a good balance," Coach Raymond said. "That's always what we're looking for."

Dave Schrotenboer also led the Bulldogs in rebounding, coming up with 11. Close behind was Marc Feeney with 10, Charlie Bridges with 9, Jesse Coburn with 6, and Jerald Benjamin with 5.

Coach Raymond complimented his team for doing a "good job" on turnovers which he cited as one of the keys to Chelsea's win. The Bulldogs had 18 in the high scoring contest while Lincoln had 24.

Statistically, Chelsea was 33 of 69 from the field for a 48 percent shooting average, the team's best of the season, and was 20 of 33 from the free throw line for a 61 percent shooting average.

By averaging 62 percent from the charity stripe this season, Chelsea is well above the 56 percent average of its opponents and has thus been outperformed only once from the line this season.

With an 8-4 conference record, and a 10-8 over-all mark, the Bulldogs will face Dexter Friday for their last regular game of the season. Previously, Chelsea lost to Dexter, 49-70, so the team will be prepared to avenge that loss.

Following Friday's game, Chelsea will begin district tournament play which will feature competition from Dexter, South Lyon, Novi, Pinckney and Willow Run, in addition to Chelsea. Willow Run is considered the district title favorite.

As a result of a drawing held Monday, Chelsea will open the tournament against Dexter at 7:30 p.m., Feb. 27, at Willow Run.

The winner will play Pinckney March 1, 7:30 p.m., also at Willow Run.

The championship game will be played Friday, March 3, 7:30 p.m., at Willow Run.

Winner of the district tournament will then advance to the regionals to begin March 6 at a still undetermined location in the Detroit Metropolitan area.

SEC Round-Up

SALINE 55, SOUTH LYON 53- It took conference leader Saline three overtime periods before proved tremendously since the



WRESTLING CHAMP: In pinning his opponent, Chelsea High senior Leon Brown shows off the excellent form that has led to his distinguished career as a high school wrestler. Brown, who finished the 1977-78 wrestling season with a 30-6 record, competed in the State Finals last Saturday where he earned a sixth-place finish in the state. Chelsea's only other entry in the tournament, senior Mike Young, wrestled well but failed to place in the event.



FIRST DIVISION SOLOISTS: These three Beach Middle school musicians were the only Chelsea students to receive Division I ratings in band events at last Saturday's District 12 Junior High School Solo and Ensemble Festival held at

Monroe High school. From left, are Daniel Kleis, multiple percussion; David Cooley, tenor saxophone; and Zachery Smith, trumpet. Band director at Beach Middle school is Warren Mayer.

Established 1871 **The Chelsea Standard** Telephone 475-1371

Excellence Award By Michigan Press Association
1951-1952-1960-1964-1965-1968
Walter P. Leonard, Editor and Publisher



Published every Thursday morning at 300 North Main Street, Chelsea, Mich. 48118, and second class postage paid at Chelsea, Mich., under the Act of March 3, 1879.

Subscription Rates (Payable in Advance)
In Michigan: One Year\$6.00
Six Months\$3.50
Single Copies\$.20
Outside Michigan: One Year\$8.50
Six Months\$4.50
Single Copies\$.20

MEMBER
NATIONAL NEWSPAPER
Association - Founded 1888

National Advertising Representative
MICHIGAN NEWSPAPERS, INC.
257 Michigan Ave.
East Lansing, Mich. 48823

Uncle Lew from Lima Says:

DEAR MISTER EDITOR:

Ed Doolittle got barns on the agender early in the session at the country store Saturday night. He said he has noted in recent years that barns are getting smaller and tractors are getting bigger, and after thinking this matter over he was of a mind that it was not for the good. Farming is a long range operation, Ed allowed, and big barns has a way of saying the owner is looking ahead. A big tractor, on the other hand, Ed went on, calls to mind a feller that is out for what he can get quick, and never mind storing up for long range.

The fellers give some thought to Ed's remarks and, like they say, Ed played to mixed reviews. Clem Webster, for instance, looked at the situation direct opposite. He said using modern equipment is the only way to farm these

days with any hope of making a living. A big barn might be a plus, Clem declared, but it don't do no good if you can't raise somepup to put in it. Clem said Ed's ideas on agriculture is as outdated as his political views, and he said Ed ain't had a fresh thought on that subject since Herbert Hoover convinced him that hardship is what a country needs ever now and agin to test its character.

Zeke Grubb was disagreed with Ed and Clem. Zeke said farming, like everything else goes through cycles, and right now we're in one that says we got to get farming organized like a car assembly line. We move what we raise right off the farm and in to the pipeline to the consumer. It don't work that way for long, Zeke allowed, and all this collective buying and selling runs its course soon or late. When farmers and ranchers get back to doing more for themselves instead of depending on all their grain and beef brokers, their dairy co-ops and their Government subsidies, Zeke said, the big barns and long ranging will be back in style.

The rest of the fellers nodded with Zeke on that one, Mister Editor, and it was Bug Hookum that said he was agreed that the move-ahead drive in everything in this country brings a heap of headaches. It used to be, said Bug, that a working man set his pay at a figger he felt he was worth. Now he goes for what he thinks his boss can pay without going broke. Somewhere in there is a fair wage a fair worker and a fair boss can find, but it takes more than both of em looking at the dollar to get there, was Bug's words.

This move-ahead business takes off in all directions. Ed got the floor again, and he used an example of when his old lady went to the dentist the other day. Ed said when they got the bill all it said was "professional services, \$73" and he was of a mind that for that kind of money he wanted to know what them services was. He wondered what the dentist would say if he got a bill for work on his car and all it said was "mechanical service, \$50."

We've moved too far ahead when we quit itemizing our bills, Ed said, even if he wouldn't know what any of the words the dentist would use means, or the mechanic either, for that matter.

Yours truly,
Uncle Lew.

FARM INCOME TAX

Since 1953

Chelsea Bookkeeping & Tax Service

202 First National Building
Ann Arbor, Mich. 48104
769-0924

MICHIGAN MIRROR

By Warren M. Hoyt, Secretary, Michigan Press Association

Utilities Must Be Better Prepared

Now that winter is just half over, it's energy crunch and crisis time again.

During normal usage periods, neither energy providers nor consumers give future shortages much thought except for occasional lip service.

Now with the severe weather here, coupled by the lengthy coal strike, the problem has again, as in past winters, reached crisis proportion with providers urging consumers to do everything within their power to conserve and consumers questioning why proper supplies were not stored during

the off season to last during Michigan's long winters.

Ohio has been experiencing worse shortages which have resulted in complete curtailment of city lighting, causing a new rash of night-time crime in major cities.

The Ohio crisis has even resulted in state-wide televised prayer meetings from the capitol building led by Governor James A. Rhodes who with tears in his eyes has appealed to a higher being to get the state through the remainder of the winter.

The Michigan Public Service Commission has urged voluntary

electrical energy conservation and use of oil and gas by utilities to avoid a forced curtailment of power this spring if the national coal strike continues.

The Commission asked for voluntary measures by electrical customers and authorized utilities to pass on the higher costs of oil and gas as a coal supplement in order to extend present coal supplies.

The higher prices will cost an average residential customer about \$1.50 more per month and estimates indicate such a program would enable coal supplies to last two weeks longer than otherwise would be possible.

Utilities have about 60 days of coal on hand and it will take about 30 days after the strike is settled to replenish supplies.

Ohio, meanwhile, has only a 14 days supply.

With current supplies, coal would run out by April 1 if no steps were taken. The use of oil and gas would extend supplies to about mid-April and voluntary conservation would maintain supplies until about May 1.

PSC Chairman Daniel Demlow said the state cannot afford to work under the assumption that the strike will be settled soon. "The adjustments we make now are relatively minor. What we want to do is avoid catastrophe later, when we would have blackouts, businesses and industry would face a shutdown and many people would be out of work," he said.

Demlow said the state also faces the possibility that the federal government may force utilities to sell electricity to other states.

The procedures set forth are to be followed in the event of an electrical shortage including reduction in internal demands by utilities and a 10 percent cut in use.

Later, selected distribution circuits would be interrupted for up to eight hours each day and industrial users could see their supplies cut by 30 percent.

Conservation by consumers is justified and useful. However, conservation due to crisis and scare tactics is another matter. Utility companies had ample opportunity to prepare for the national coal strike as signs of the strike appeared months prior to the walkout. Also, with experience of past winters, and especially with the lesson that should have been learned during the 1976-77 winter, utilities should have

participating in the symbolic rites were building committee members George Halst, Walter Haab, Clarence Koenigter, Arthur Grau and Max Ziegler.

Drilling for oil on the Norman and Loren Hinderer farm on Sager Rd. came to an abrupt halt Friday evening and the drilling equipment has been moved to the Walter Eschelbach property, approximately one mile east of the Hinderer farm. Drilling had reached 1,440 feet when the Hinderers were told that, for the present, the well is considered a dry hole.

34 Years Ago...

Thursday, Feb. 24, 1944—

In an effort to interest boys of school age in acquiring a limited amount of woodworking experience the Chelsea Kiwanis Club is sponsoring a woodworking workshop which will be carried on each Wednesday in the shop department at the public school. Boys are invited to bring wooden toys or other articles they would like to repair to the workshops.

The Woman's Relief Corps, under the direction of Mrs. Harold Bair in Chelsea, is sponsoring a Blood Plasma Drive. Funds contributed to the drive will be used in the processing of blood, which in turn may save the life of a relative or friend.

In answer to invitations from members of this community, Frieda Huggert, County Day Care worker, has arranged regular office hours in Chelsea, beginning Feb. 29, to receive inquiries and look into local conditions.

14 Years Ago...

Thursday, Feb. 27, 1964—

Beverly May Windell has been named 1964 Betty Crocker Home-maker of Tomorrow for Chelsea High school, it was announced this week.

The 1963 Chelsea Fire Department report lists a total of 138 calls received—134 for fires, three for the rescuator and one "false alarm"—more than half the number of calls resulting because of grass fires. A total of 77 grass fires were listed.

On Saturday, Feb. 22, a bright yellow crocus was in full bloom on the east side of the John Wellnitz home, 520 Howard Rd. Wellnitz noticed the flower after it had pushed its way through the winter mulch around a rosebush. He is the first Chelsea resident to report the blooming of an outdoor flower this year.

Jack Merkel, president of the Chelsea Friends of the Library, announced yesterday that the group has decided to sponsor a series of basic bridge lessons, providing a sufficient number of people are interested. Tentative plans are to meet Friday nights at McKune Memorial Library.

24 Years Ago...

Thursday, Feb. 25, 1954—

For the fourth consecutive year Mrs. John Fischer will head the Red Cross campaign for funds in Chelsea when the 1954 drive opens Monday, March 1. Her district chairmen are Mrs. Robert Horste, Mrs. Deane Rogers, Mrs. Leigh Palmer, and Mrs. Stephen Slane.

Notes for final payments on the cost of the Zion Lutheran parish house at Rogers Corners were burned in a ceremony which took place at the fifth anniversary dinner there Sunday afternoon. Par-

U-M Clinic Offers Free Fitness Class

The University of Michigan's Turner Clinic, located at 1000 Wall St., Ann Arbor, will host a free physical fitness workshop for area senior citizens Monday, Feb. 27, from 1 to 4 p.m.

Entitled "How To Winterize Your Aching Bones and Joints," the session, which is designed for people over 60, will include physical and rhythmic exercises under the direction of Dr. Joseph Vaughan, physical education director at the University of Michigan.

Area Girl Scouts Ready for Feb. 28 Thinking Day

Western Washtenaw Area Association of Huron Valley Girl Scout Council will hold its "Thinking Day" celebration at Dexter High school, Saturday, Feb. 25.

Thinking Day, Wednesday, Feb. 22, is celebrated by Girl Guides and Girl Scouts throughout the world. It is the birthday of Lord Baden-Powell, who started the world-wide Guiding and Scouting movement, and also of his wife, Olave, Lady Baden-Powell, for many years the World Chief Guide. On this day a collection for the Juliette Low Fund will be taken from the troops. The World Association of Girl Guides and Girl Scouts has a Thinking Day Fund, used for purposes ranging from disaster relief to helping Girl Guide organizations get started in new countries, etc.

This year's theme will be "Worlds To Explore." Troops from Chelsea, Dexter, Manchesters, and Saline will have displays from "The World of People," "The World of Well-Being," "The World of Today and Tomorrow," "The World of the Arts," and "The World of the Out-of-Doors." The opening and flag ceremony is planned for 11 o'clock. In the afternoon several troops will have puppet shows, other troops will perform a dance, or demonstrate back-packing, firebuilding, survival, etc.

The public is invited to come and see what the Girl Scouts do, from 10:30 a.m. to 2:30 p.m.

been ready and made long-range plans to get Michigan residents through winters the state has historically faced.

HIGHEST PRICES PAID
for all kinds of oak, cherry and ash
standing timber

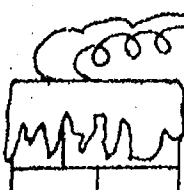
Selective cutting or whole woods.

L. B. EXPORTERS

Call Nashville, Mich. (517) 852-9718

or write

2881 N. Devine Rd., Nashville, Mich. 49073

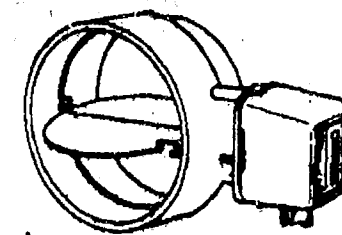


THIS WINTER AND
EVERY WINTER...

SAVE UP TO 24%

ON HEATING BILLS
WITH

GAS MISER
AUTOMATIC FLUE DAMPER



\$160*

*Gas design furnaces, 4, 5, 6" flue size, 24V control system.

GAS MISER prevents warm air from escaping up your chimney by opening and closing automatically. Absolutely safe and accepted for all natural gas installations by Metropolitan Detroit and most reciprocal communities. Call today and start saving on heating bills now.

AUTOMATIC FLUE DAMPER ALSO AVAILABLE
FOR OIL. PRICES AVAILABLE UPON REQUEST.

ENERGY RECOVERY, INC.

Licensed Heating & Cooling Contractor
3126 Broad St., Dexter (313) 426-3967

Advertise Your Auction in
In The Standard!

PRESTIGE

ANN ARBOR FEDERAL SAVINGS



the money saver...

Our Prestige Card is not only convenient, it can save you money. With the Prestige Card you can have all the travelers checks and money orders you need. And you can use your Prestige Card to get up to \$200 emergency cash at over 1500 participating savings and loan associations in the conti-

mental United States and Hawaii and Alaska. There is no charge for these services. The only requirement is that you maintain a balance of more than \$1000 in savings. Prestige Cards are available at all Ann Arbor Federal Savings offices. For information call 769-8300.

no charge
travelers checks

no charge
money orders

plus, out of town
emergency cash

Donald A. Roth,
Community Relations Manager,
Ann Arbor, offers you this
telephone tip:



Call us before you move...
you might save
unnecessary expense.

If you're planning to move to another home, now's the time to think about how many phones you might need in your new home and what kind of changes you might need in your phone service. A little planning can help you avoid unnecessary installation charges.

Call your Michigan Bell Service Representative. Allow enough time before moving for a full explanation of service and equipment options and time to order the phone service you need when you need it. Remember, once your new service is installed, extra visits by your installer mean extra expenses for you, expenses we'd rather you didn't have to pay.



Michigan Bell...
people who enjoy serving people.

Michigan Bell

ANN ARBOR FEDERAL SAVINGS

11 OFFICES TO SERVE YOU IN: ANN ARBOR, BRIGHTON, CHELSEA, DEXTER, MANCHESTER, SALINE, YPSILANTI • Member FSLIC

Modern Mothers See Demonstration Of Greek Cooking

On Feb. 14, members of Modern Mothers enjoyed a Greek cooking demonstration by Lenore Mattoff in her home. Sampling the results was especially enjoyable. Co-hostesses were Jan Grenier and Kathy Love.

Ruth Circle Meets At Methodist Home

Ruth Circle of the United Methodist Women's Society met Feb. 15, 1 p.m., in the Crippen Building. The 19 members and three guests in attendance were greeted by Mrs. Marian Harper and Mrs. Rennie Buxton, co-hostesses for the meeting.

Refreshments were served from tea tables decorated with various items commemorating the lives of Abraham Lincoln and George Washington.

Mrs. Audrey McKee, chairperson, called the business meeting to order and Mrs. Harris led the group in devotion, taking as her theme, "Pre-Easter Dedication Through Prayer."

Mrs. Winifred Cooley then gave a program presentation on women of the Bible.

School Board Briefs

At a regular meeting of the Chelsea Board of Education Monday, Feb. 20, present were Daniels, Tobin, Heller, Stirling, Schaffer, Feeney, Hodgson, Principal Williams and Assistant Principal Schave.

Guests present were Phil Barnes and Tom Balistrere.

Meeting was called to order at 8 p.m. by President Daniels.

The board approved the minutes of Feb. 6 as presented.

Phil Barnes of the Milan School District made a presentation to the Board of Education regarding the Community Education concept. This program could include high school completion courses for those out of school, Adult Education, Recreation and Community use of school facilities. Funds for the program are available from the state.

The contract of Jill Cummins was approved for the remainder of the school year.

Trustee Feeney reported on the mid-winter Michigan Association of School Boards Conference.

High School Principal Williams presented and discussed the North Central Evaluation of the high school.

Trustee Hodgson reported that the next issue of the Chelsea Challenge is due to be published in March.

Trustee Heller reported on meetings with township boards to discuss bi-annual tax collection.

Trustee Stirling reported that the curriculum committee will meet on March 2.

The Board of Education will meet on March 6 in the Beach Middle school at 8 p.m., following the election to be held on that day.

The Board discussed the procedure to be followed for interviewing the candidates for the position of Superintendent of Schools. The board will interview on Feb. 21, 22, 23 and 28 beginning at 6:30 p.m.

Absentee ballots for the millage renewal election to be held on March 6 are available in the Superintendent's office of the high school administration building.

TOUCH OF GLASS

A Style for Any Occasion!
1196 M-52
Phone 475-1591

Open Tues. thru Fri. 9 to 4
Saturday 9 to 2
Evening hours by appt. only

Men's & Women's Cuts & Styles
Senior Citizen Discounts every day.



Mr. and Mrs. Alfred J. Jedeles

Alfred Jedeles Will Observe 50th Wedding Anniversary

Mr. and Mrs. Alfred J. Jedeles, 12695 Island Lake Rd., will be honored at a 50th wedding anniversary open house Sunday, Feb. 26, from 2 to 5 p.m., at Salem Lutheran School hall, 2075 Strieter Rd., Ann Arbor.

The event will be hosted by the couple's daughter and son-in-law Norwin and Carol Lesser of Dexter, and their son and daughter-in-law, Ronald and Shirley Jedeles of Brighton.

The Jedeles were married March 1, 1928 in Lima township and are life-long residents of the Ann Arbor area. Mr. Jedeles is a retired farmer. They are both members of Salem Evangelical Lutheran church of Ann Arbor and the Senior Citizens' Guild, also of Ann Arbor. Their hobbies include gardening and travel. They have eight grandsons.

The couple requests that no gifts be given.

FFA Celebrating 50th Anniversary

Chelsea Future Farmers of America (FFA) joined the national FFA last Saturday in a week-long golden anniversary celebration that will continue through Saturday, Feb. 25.

Theme of the celebration is "FFA at 50—A Golden Past... A Brighter Future."

The FFA is a national organization of 500,000 students studying vocational agriculture in 8,500 public schools. It is an educational, non-profit, non-political organization of, by and for these students.

Foundations upon which the organization is built include leadership, character development, sportsmanship, co-operation, community service, thrift, scholarship, recreation, citizenship and patriotism.

Throughout the year, local FFA chapters participate in activities designed to promote these qualities.

One such activity is the annual Leadership Contests which begin at the district level and continue through state and national levels.

At the District Leadership Contest at Dexter two weeks ago, Chelsea FFA members won all three of the events they entered in the competition. Today, they will be competing for additional honors at the regional level in the same three events—public speaking, demonstration, and parliamentary procedure.

Chelsea FFA advisor is Dave Nicewicz.

Independent Party Unopposed

(Continued from page one)

Nominated for a two-year term as president was incumbent Don Wood, while Richard Barnhill was nominated for a two-year term as treasurer to replace incumbent Wallace Wood. Barnhill is a certified public accountant who operates his own office in Ann Arbor.

Incumbent Judson Goltra will seek another two-year term as village assessor.

Selected to run for a one-year term as village trustee was Jack Patrick, who will replace Diane Borton. Patrick is employed as a sales representative for Chelsea's Rockwell International plant.

Nominated for two-year terms as village trustees were incumbent Walter Brown, incumbent James Schardein, and newcomer Harold Rady. Rady, employed by the Ann Arbor Police Department's, juvenile department, will replace trustee Robert Schaffer.

Independent Party candidates for two trustee positions on the Library Board are incumbent Ann

Belser and Patricia Chriswell.

Both will serve for three-year terms when elected, with Chriswell running for the position to be vacated by incumbent Shirley Schable.

The 1978 Independent Party platform will retain its five-point campaign objectives as presented in 1977.

Primary objective of the platform is to continue to maintain the orderly and controlled growth of the village in accordance with Chelsea's current comprehensive plan.

The other four points of the platform are to continue to work for the improvement of the present sewer system, to continue favoring a co-operative approach to the problems of recreation, to continue opposition to the proposed Mill Creek Park as presented by the Huron-Clinton Metropolitan Authority, and to continue support of the Village Planning Commission.

The Independent Party, which dates back at least 50 years, lapsed into inactivity in the late 1940's. Sometime around 1952, it was reactivated and has continued to stand unchallenged.

Telephone Your Club News To 475-1371.

Make Your Lunch More Nutritious!

Serve
Whole Grain Bread,
Burger or
Hot Dog Buns.

**RIVENDELL
NATURAL FOODS**
Across from the Farmers' Market
3212 Alpine, Dexter
Ph. 426-2549

Chelsea Co-Op Nursery Children Study Dinosaurs

Instructors at the Chelsea Co-Op Nursery have been introducing the four-year-olds to Brontosaurus, Allosaurus, and Stegosaurus recently, as the children studied the great dinosaurs which once walked the earth.

Toting buckets, the children went on a fossil hunt in the sand box, where styrofoam bones were hidden. Each child tried to find enough bones to glue on his own dinosaur skeleton. Dinosaur puppets were also made.

On Monday, Feb. 27, the four-year-olds will visit the dinosaur section at the Exhibit Museum of Natural History in Ann Arbor.

After hearing the story, "Where do you Live?" the three-year-olds made rabbit ears and hopped into their bunny holes.

Co-Op Nursery Children Learn About Ambulance

February has been a very exciting month for the children at North Lake Co-Op Nursery, Inc.

Valentine parties were held for all sessions on Feb. 13 and 14, followed by visits from the Horne-Vinson Ambulance Co. on Feb. 15, 26 and 22, so all children would have a chance to examine the emergency vehicles.

Ambulance drivers, Bill and Dave, brought their vehicle to school so the children could enter the interior and see the emergency equipment close-up. The children also found out how the drivers work the lights, siren, radio communications and oxygen units.

The children were very interested and had many questions for the drivers. All questions were well-answered, nursery staff members reported.



WAHL-WALZ: Mr. and Mrs. Lester Wahl of Stockbridge have announced the engagement of their daughter, Sherrie Lynn, to Michael Wayne Walz, son of Mr. and Mrs. Duane Walz of Munith. The bride-elect is currently a senior at Stockbridge High school. Her fiancé is a 1975 graduate of Stockbridge High school and farms with his father. A July 15 wedding is planned.

Let a Standard Want Ad sell your unwanted items!

CAROL'S CUTS

328 Wilkinson

CAREFREE STYLES

Open Mon., Wed., Fri.

475-7094

Appts. Only

Give something very special



A Keepsake diamond is the perfect symbol of the love you share... guaranteed perfect permanently registered protected against loss.

Keepsake
Registered Diamond Rings

WINANS JEWELRY

RICARDO'S HAIR STYLING

107 N. Main, Chelsea

OPEN MONDAY THROUGH SATURDAY
475-1671

LP SPECIAL

Barry Manilow - "EVEN NOW"

ONE WEEK ONLY \$3.99

THE MUSIC HUTCH

8107 MAIN ST., DEXTER 10 a.m.-5:30 p.m. PH. 426-4380



FEBRUARY ONLY SAVINGS EVENTS

SAVE 30%

on custom-made draperies in a wide choice of fabrics... phone designer Karen Steinaway, 475-8621 for shop-at-home service

SAVE 15%-40%

on a selected group of wallcoverings... redecorate for spring and save now.

SAVE 20%

on custom-made-to-measure upholstery from HENREDON FURNITURE.

SAVE 20%

on custom-made sofas, love-seats and chairs from our FRANKLIN line of upholstery.

MAIN ST. IN CHELSEA
PHONE 475-8621

LIMA TOWNSHIP NOTICE

The Mill Creek Park question will be discussed with the Southeast Michigan Council of Governments, the Lima Township Board, Lima Township Planning Commission and the Mill Creek Research Council on Tuesday, February 28, at 8:00 p.m., at the Lima Township Hall, 11452 Jackson Road, Dexter.

LIMA TOWNSHIP

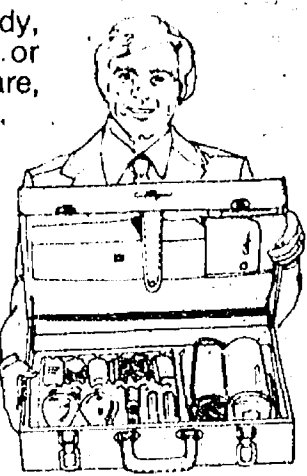
ARLENE R. BAREIS, CLERK

FREE scientific analysis of problem water.

If the water in your house looks cloudy, stains wash and porcelain, tastes or smells bad, spots dishes or glassware, we'll test it for you free of charge.

We'll tell you exactly what the trouble is and recommend the best, most economical way to get clean, clear, filtered fresh water.

Water conditioning is our full time business. We are local specialists backed by the world's leading maker of water conditioning products.



Just pick up the phone now and say...
"HEY CULLIGAN MAN!"

2321 Jackson Ave., Ann Arbor
662-5665

ATTENTION!

Friends of the Chelsea Players are now accepting applications for the following positions:

- ★ Director of the Summer Play.
- ★ Rehearsal Pianist.
- ★ Co-ordinator of the Children's Summer Theatre Workshop.
- ★ Teachers for Workshop Classes in Acting, Mime, Make-Up and Clowning, Technical Aspects (sets, props, lighting), and Dance.

DEADLINE: MARCH 1

All interested individuals are encouraged to send a brief resume to Mrs. W. S. Vorus, 13560 North Lake Rd., Gregory, Mich. 48137. Phone 475-8716.

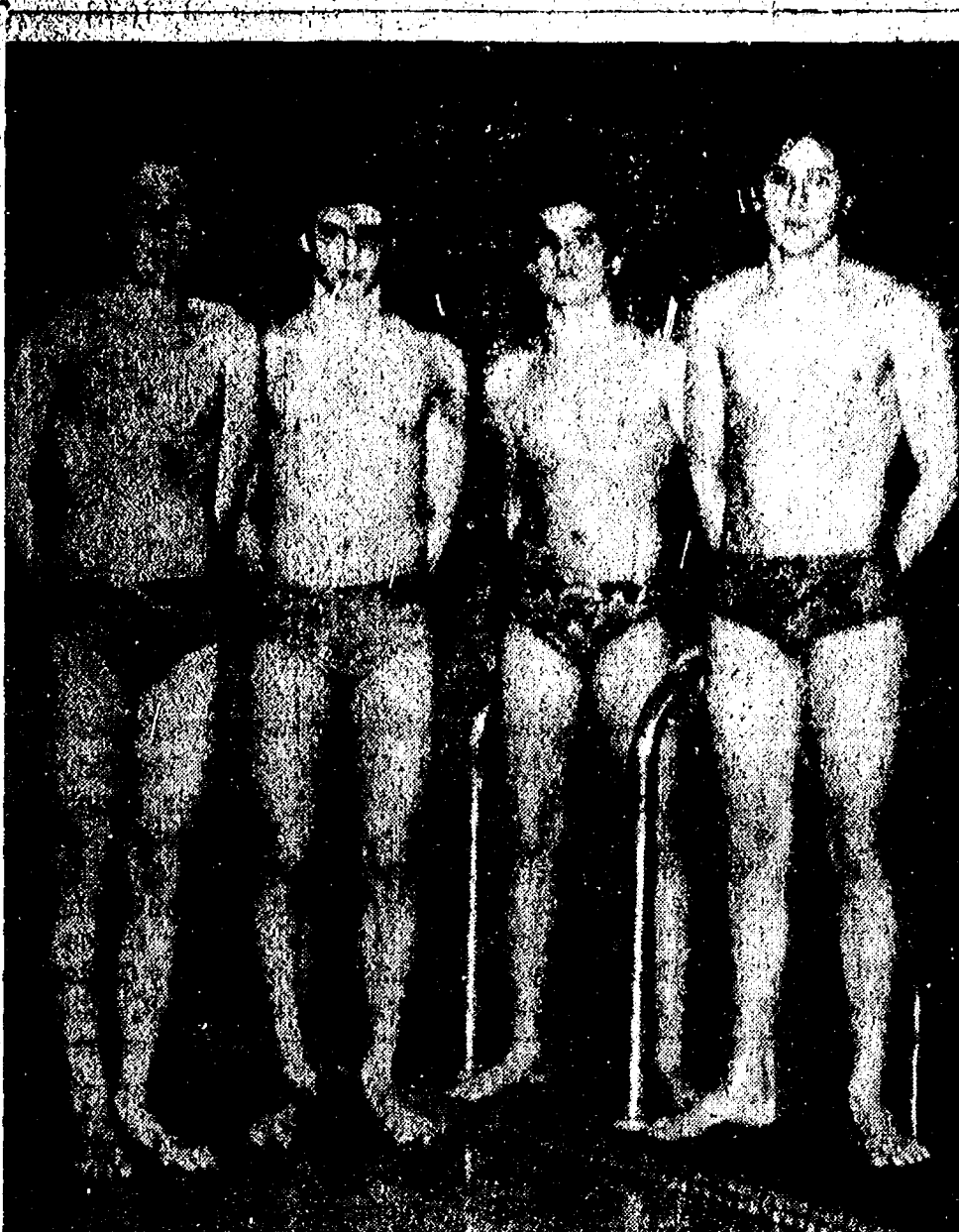
The Black Sheep Repertory Theatre

PRESENTS PETER, PAUL & MARY'S

MARY TRAVERS

SUNDAY & MONDAY, MARCH 5, 6

SHOWS AT 7 p.m. & 9:30 p.m. Sunday shows: \$6.50/Monday shows: \$6.00. Tickets available at: Jacobson's "J" Shop on State Street from 11-3 p.m.; Recordland in Briarwood Mall; Schoolkids' Records; In Manchester at ADA Office, 104 E. Main Street from 9-12, 1-3 p.m.; By mail order to: ADA Ticket Office, P.O. Box 472, Manchester, MI 48138 (please enclose check or money order only along with self-addressed, stamped envelope and state show time and date). For more information phone 313-485-9287 or if no answer 428-9280. A division of the Association for the Performing Arts, Manchester, MI. From Ann Arbor, take I-75 west to M-52, south to Manchester.



SWIMMERS OF THE WEEK: Together, these four Chelsea High school swimmers form the varsity swim team's 400-yd. freestyle relay squad which last Tuesday, Feb. 14, broke the pool record at River Rouge. From left, are Mike Mason, Phil Hoffman, Todd Oxner and Scott Prohaska. All are freshmen with the exception of Prohaska. In addition to competing in the relay, Mason swims the 100-yd. and 200-yd. freestyles, and as a freshman, is second only to Hoffman, who holds freshman records in the 50-yd., 100-yd., 200-yd. and 500-yd. freestyle races. In the latter three events, Hoffman also holds varsity records. Oxner and Prohaska are both distance freestylers (200-yd. and 500-yd.) and individual medley swimmers (two pool lengths of each of four strokes). Oxner holds the freshman record in the individual medley, while Prohaska, Mason and Hoffman have teamed with Henri Vanderwaard to set Chelsea's varsity freestyle relay record.

Lyndon Board Seeks To Remove Dogs

(Continued from page one)

off, Baum began collecting a new supply of dogs which had reached 40 by the time of his trial before Judge Deake. Although the judge gave Baum until Jan. 6 to get rid of the dogs, Baum ignored the ruling and at last report was adding more dogs to his collection.

Last week, the Washtenaw County Sheriff's Department dog control officer Merle Reichert, ticketed 22 unlicensed dogs at Baum's kennel.

At first the Lyndon Township Board was prohibited from taking any action against Baum because papers had to be filed to make Judge Deake's Dec. 2 ruling legal. Furthermore, the ruling did not explicitly authorize any party to remove the dogs, but simply stated Baum could keep only three on his property.

Baum was given 20 days in which to appeal the judge's decision, but has apparently decided to forego such action.

With few options remaining to force Baum to comply with the Dec. 2 ruling, the board instructed

township attorney Peter Flintoff to place a lien on Baum's property last month, but residents were concerned that this move merely bypassed the issue as the dogs could still remain at the kennel for an unlimited time before the property was sold.

This concern has now been resolved by the board's decision to revert back to the courts for legal authority to remove the dogs immediately.

"We're satisfied with that decision," Mrs. Myers said in speaking for those petitioning for the action.

Though it now looks like Baum's dog days are quickly coming to an end in Lyndon township, the kennel owner, who also attended Tuesday's meeting, continues to deny his dogs are a nuisance.

He also took issue with testimony given in court by Kallan Liston, Mrs. Myers attorney, that the dogs at the kennel are un-cared for.

"That attorney's statements were a pack of lies," Baum told the board Tuesday. "He doesn't know how I care for my dogs."

Conference Round-Up

(Continued from page one)

the team was finally able to scrape by South Lyon for a 55-53 conference victory at South Lyon last Friday.

Little scoring was done late in the game and in the overtime because both teams held on to the ball in an attempt to get the sure shot.

Saline is now 12-4 over-all and 11-2 in the Southeastern Conference. South Lyon dropped to 5-11 and 3-9.

MILAN 56, BRIGHTON 54—

After being held to only five points in the third period on their home floor, the Milan Big Reds went on a 23-point scoring binge in the fourth quarter to pull out a 56-54 decision over Brighton and avoid what looked like an inevitable conference upset only minutes earlier.

The 7-11 Brighton Bulldogs, who have won their last four games, had a chance to send the game into overtime with only four seconds remaining in the game, but

Keith McClain's desperation jumper from mid-court was off the mark.

As a result of the game Milan raised its over-all record to 10-5, and its conference mark to 9-3.

NOVI 75, DEXTER 51—

The Novi Wildcats played host to Dexter last Friday only to hand their visitors a 75-51 conference loss in a game that was decided by the rebounding efforts of both teams.

Novi dominated the boards, hauling down 47 rebounds compared to Dexter's 27.

The win boosted Novi's season record to 9-9 while Dexter slipped to 9-7.

SOUTHEASTERN CONFERENCE Standings as of Feb. 17

	W	L
Saline	11	2
Milan	9	3
Chelsea	8	4
Novi	7	6
Dexter	6	6
Brighton	5	7
South Lyon	3	9
Lincoln	0	12

Swim Team Wins Two of Three Meets

Chelsea High's varsity swim team spent a lot of time on the road this past week, traveling three days in succession to River Rouge, Erie-Mason, and Lincoln.

The Bulldogs defeated River Rouge, 98-71, and Lincoln, 84-77, but sandwiched in-between was a 104-65 loss to Erie-Mason.

At River Rouge, Chelsea's 400-yd. freestyle relay team broke a pool record. Members of the relay squad are freshmen Todd Oxner, Mike Mason and Phil Hoffman, and sophomore Scott Prohaska. Also performing well in the meet was Randy Koch in diving.

Against Erie-Mason, Phil Hoffman broke a school record and freshman record in the 500-yd. freestyle.

Others swimming well were Tom Gaunt and Charles Weis-

JV Cagers Closing in on Championship

At the very least, Chelsea's junior varsity basketball squad will wrap up their season in a tie for the Southeastern Conference championship as a result of Tuesday's 65-55 win over Brighton. And, if the junior Bulldogs cagers defeat Dexter Friday, the title will be theirs alone.

Tuesday's game was an extension of the success that has marked the 18-3 Bulldogs this year. In the conference, they have a nearly perfect 12-1 record.

Even though Chelsea failed to play one of its best games of the year against Brighton, the team came up with a 10-point margin of victory.

Pacing the Bulldogs were Jeff Dils with 20 points, 4 rebounds, 2 steals and 7 assists; John Dunn with 16 points, 1 rebound, 3 steals and 3 assists; Mike Killelea with 14 points, 7 rebounds, 6 steals and 2 assists; and Don Schrotenboer with 9 points, 17 rebounds, 2 assists and 9 blocked shots.

Also contributing to the winning cause were Brad Knickerbocker with 4 points, 3 steals and 1 assist; Dave Seyfried with 2 points; and Mike Wood with 2 rebounds and 1 assist.

Cribbage Tourney Standings

Top eight play-off next Monday, Feb. 27 at Chelsea Lanes, 7 p.m.

	W	L	Pts.
Fred Brede	19	11	1154
Art Jarve	19	11	1117
Jo Anderson	18	12	1322
Skip Schlup	18	12	1290
Mike Kelley	16	14	1479
Richard Glasson	16	14	1412
Dan Shirilla	16	14	1412
Jeff Boyer	16	14	1411
Bob Gaiser	15	15	1626
David Boyer	15	15	1616
Ginnie Wheaton	14	16	1716
Judy Granger	14	16	1711
Darlene Barry	14	16	1693
Sue Walton	13	17	2990
Jon Burns	13	17	1789
Sally Schlup	10	20	2150
Tom Penhallegon	10	20	2065
Tessie Monroe	10	20	1992
Rodney Houle	10	10	1014
Greg Bush	8	12	1115

Two Chelsea Students Named to Honor Group At Albion College

Two students from Chelsea have been named Albion Fellows at Albion College, Albion.

They are David C. Alber, a junior, son of Mrs. Dolores Alber, 754 Flanders St., and Donald Alber of Dexter, and Mike Kozminski, a sophomore, son of Mr. and Mrs. Mike Kozminski, 4678 Peckins Rd.

To be named an Albion Fellow, a student must have a 3.7 or better grade point average, based on a 4.0 system, for three consecutive semesters, ending December, 1977, and must earn that grade point average while carrying a full class schedule.

HONOR ROLL CORRECTION

The names of two 8th graders on the Beach Middle school honor roll for the second marking period were inadvertently omitted from the honor roll list published on page 4 of the Feb. 16 issue of The Chelsea Standard.

The two students are Katherine Ullman (all A) and Amy Unterbrink.

CURTIS MATHES COLOR TV

America's most expensive TV sets... but not this week at LOY'S TV.
4-yr. parts warranty
4-yr. picture tube warranty
4-yr. chassis labor.

TOUCH TUNING REMOTE CONTROL COMBINATION COLOR TV

Also Black & Whites

WE TAKE TRADES

LOY'S TV

512 N. Maple Rd., Ann Arbor
Phone 769-4469
Welcome. Bank Financing.
Master Charge & BankAmericard

Pet Food Drive Lasts Through This Week

The Chelsea Jaycee Auxiliary is continuing its Pet Food Drive this week in conjunction with the Huron Valley Humane Society.

Because of a restricted budget and the growing cost of animal food the animal shelter has been having difficulty keeping up with the demand on its food supply. Consequently, a plea for help has been made to organizations and individuals throughout the county and the local Auxiliary has chosen to respond.

Pet food collection boxes have been placed at Polly's Market, Jiffy Market, Schneider's Grocery and Rick's Market by the Auxiliary which is asking area residents to find room in their budgets for an extra can or bag of dog or cat food, a box of dry milk, or even a bag of birdseed to drop into the collection boxes.

Cash donations are also being accepted by Sandy Meyer, Jaycee Auxiliary treasurer, at 19505 Old US-12, Chelsea. All donations are tax deductible.

By helping the humane society with its food problem, residents will also be supporting a society which serves the county in many ways. Services available at the animal shelter include the sale of I.D. tags which match up with cards, containing the name and address of a pet's owner and the pet's description.

Also available is a 24-hour answering service. A person finding an animal with an I.D. tag has only to call in the number of the tag and the shelter will give the location of the pet's owner so the animal can be returned home.

This saves the pet the trauma of staying at the shelter. Some 23,000 animals are now registered in the program.

Finally, the humane society offers a 24-hour hurt or dead animal pick-up service.

The Huron Valley Humane Society makes an outstanding effort to educate the public in pet care, including prevention of pet overpopulation. The shelter offers a spay and neuter clinic at a nominal cost, and all animals there receive excellent care.

The county humane society has served the area since 1890, and now that it is asking for help, Auxiliary Pet Food Drive chairman Sue Zink urges members of the community to take the issue to heart and contribute to the drive.

Michelle Blanchard Initiated into Sorority At Miami University

Michelle Blanchard, daughter of Dr. and Mrs. Gerald Blanchard, 755 S. Freer Rd., has been formally initiated into the Beta Tau Chapter of Alpha Chi Omega sorority.

Initiation ceremonies took place Jan. 30 at Miami University, Oxford, O., where Miss Blanchard is enrolled as a student.

She is a graduate of Chelsea High School.

Please Notify Us of Any Change in Address

Carl's Cleaning Service

521 S. Main St.

Chelsea, Mich.

Professional Carpet & Upholstery Cleaning

BUSINESS - RESIDENTIAL

FREE ESTIMATES

Phone 475-8007

We Are Running A SPECIAL ON ALL CUTS OF BEEF

Call Us and Ask About Our Prices!

CUSTOM SLAUGHTERING & PROCESSING FOR THE RURAL & FARM FAMILY

DUNBAR'S DEXTER LOCKER

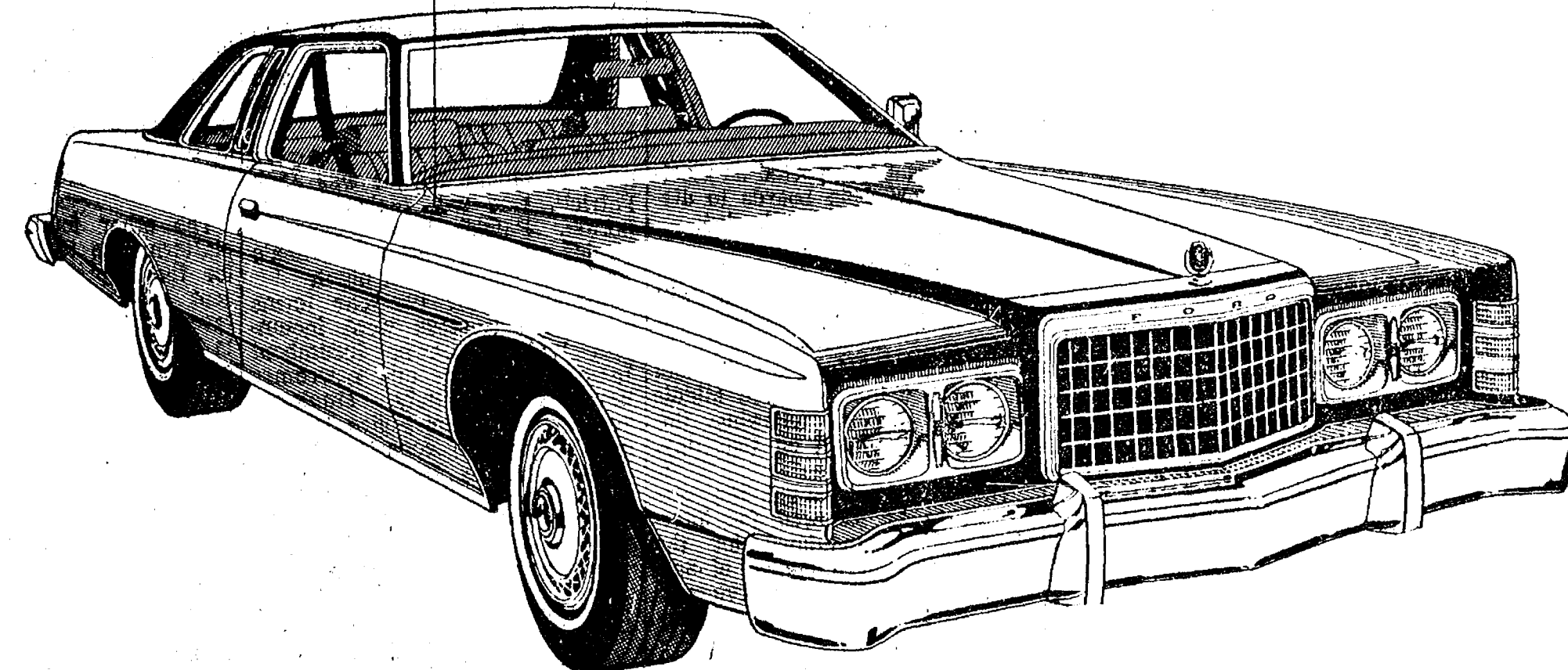
PAUL DUNBAR, Owner

8083 Main St., Dexter

Ph. 426-3466

A Standard Want Ad Gets Results!

ONE OF THE LAST TRADITIONAL FULL-SIZE FAMILY CARS 1978 FORD LTD



17* COMFORTABLE MILES PER GALLON

With these standard features that give Ford LTD great value.

- Automatic transmission
- Power steering
- Power front disc brakes
- 302 CID V-8
- Deep-well trunk
- Vinyl insert body-side moldings
- Room for 6 people
- Cut pile carpeting
- DuraSpark ignition

22*/15*
MPG HWY MPG CITY

*EPA estimates for standard 5.0 liter engine: for combined city/highway (17 mpg), and for city (15 mpg) and highway (22 mpg) individually. Naturally your mileage will vary depending on your car's condition, optional equipment, and how and where you drive.

ECONOMY STARTS AT YOUR FORD DEALER

PALMER MOTOR SALES, INC.
224 S. MAIN STREET
CHELSEA, MICHIGAN

Tonight and Every Thursday THE CAPTAINS TABLE ROAST BEEF BUFFET



"Carved Before Your Eyes"
Serving from 4:30-9:30 p.m.

The Captains Table - 8093 Main St., Dexter



LOREN W. CAMPBELL

L. Campbell Seeking Probate Judge Post

Loren W. Campbell, senior partner in the law firm of Forsythe, Campbell, Vandenberg, Cleveland & Bishop, P.C., today announced his candidacy for the office of Washtenaw County Probate Judge.

Washtenaw county has two probate judges. Judge Francis O'Brien, the present senior probate judge, plans to retire and will not be a candidate in the August primary election. Judge Rodney E. Hutchinson, the second probate judge, has two more years to run in his present term. Campbell is a candidate for O'Brien's office.

Campbell has practiced law in the Ann Arbor area for 30 years. He served as Assistant Trust Officer at the National Bank and Trust Company of Ann Arbor, and then entered private law practice with Franklin C. Forsythe; together they organized the law firm which bears their names.

In announcing his candidacy Campbell said: "Washtenaw county is a great place in which to live, work and raise a family. It is also a dynamic community that is not afraid of new ideas. The community has been good to me, and in turn, I have tried to serve the area through participation in many service groups. Now I would like to put these many years of professional experience to a more concentrated use through the services of the Probate Court.

"Although the Probate Court has a number of responsibilities under our laws, its main functions are to care for problems of children and youths in the Juvenile Division and to handle estates and mental health matters in the Estate Division. My professional work, training and interests are such that I am experienced and will be effective in either division of the Probate Court or in some sharing of the work of both divisions if that pro-

vides better and more effective service to the people of Washtenaw county.

"As good and as sound as our community is, there are still cares and problems to be faced: child abuse, juvenile delinquency, adoptions, care for the mentally ill, settling the estates of those who have died and problems of alcohol and substance abuse. There are no easy solutions and I offer no false promises for miracle cures. What I do promise, if elected, is to meet the many challenges of the Probate Court with the abilities of 30 years of professional experience and the dedication to helping people—both young and old.

"The office of probate judge is a non-partisan office. I intend to run a non-partisan campaign. The problems of children, of parents, of the mentally ill, of handling estates are not issues of partisan politics and differing viewpoints; how to deal with these problems ought to transcend political parties. Let concern for people be the issue. Let qualifications of the candidates be the basis for election to this high office."

Campbell was born and raised in Traverse City where he graduated from high school in 1932. He attended Central Michigan University and the University of Michigan where he received a degree in education in 1941. After three years of study he received a divinity degree from Oberlin Graduate School. He served for 19 years as an ordained minister of the United Methodist Church, serving churches in Big Rapids, Pontiac and Dixboro. While serving as minister of the Dixboro church, Campbell attended the University of Michigan Law School where he received a Juris Doctor degree in 1949. He and his wife Gladys, have lived in Superior township for the past 33



STEVE HOLLISTER



SUE GERMAN

DAR Good Citizen Awards Announced

Ten area high school seniors and their parents will be honored Saturday, Feb. 25, at Bentley Historical Library, Ann Arbor, by the Sarah Caswell Angell Chapter of the National Society of the Daughters of the American Revolution (DAR).

The seniors are all winners of the good citizenship awards presented annually by the DAR to students exhibiting the outstanding qualities of dependability, service, leadership and patriotism.

Mrs. Thomas Shea, committee chairman, and Mrs. John L. Onley, regent, will present the award winners with Good Citizen pins and certificates.

Among the 10 seniors chosen to receive awards are Sue German of Chelsea High school, daughter of Mr. and Mrs. Robert German, 7081 Lakeshore Dr. She plans to enter the University of Michigan School of Literature, Science and Arts in the fall, and later plans to attend a business college to prepare for a career as a travel agent.

In local and state activities of Kiwanis clubs in their drug abuse programs and studies. He was president of the Ann Arbor Kiwanis Club in 1958. He has also served for many years on the local governing boards of Drug Help, Inc., and Ozone House, two local service programs for youths; they have three sons and two grandchildren.

During the past 30 years Campbell has served as a trustee or member of the governing boards of such organizations as the YMCA, Senior Citizens Guild, the Humane Society, Chelsea Methodist Home Children's Aid Society of Ann Arbor, and the University of Michigan Interfaith Center. For many years he was president of the Board of Trustees of the Detroit Conference of the Methodist Church. For 18 years, he was the state-appointed member and chairman of the Washtenaw County Welfare Board which later became the Department of Social Services. In 1961 he was county chairman of the American Cancer Society fund-raising campaign. During the past six years he has been a lecturer on estate planning and probate proceedings.

In 1970 Campbell was appointed by Ann Arbor Mayor Robert J. Harris to the Citizens Blue Ribbon Committee on Problems of Drug Abuse, which completed an in-depth study of drug problems in the Ann Arbor community and published a report in December 1970. Governor Milliken appointed Campbell to two different task force groups studying problems of substance and alcohol abuse, which made recommendations to the governor and the legislature in 1970 and 1971. He was also appointed to the first Board of Directors of the Washtenaw County Community Health Board. In 1972 Campbell spent time in England where he consulted with the director of the British drug abuse program. He has been a leader

Miss German is a cheerleader, a member of the National Honor Society, and recipient of the American Legion Award.

Steve Hollister of Dexter High school has also been selected a Good Citizen. He is the son of Mr. and Mrs. Gene Hollister, and plans to enroll this fall at Grand Valley State College where he will major in health science. Hollister plans to pursue a medical or dental career.

A third area youth to be honored Saturday is Barbara Kuzniar, a senior at Whitmore Lake High school. She will be attending Michigan State University in the fall to study retailing, and would like to become an overseas clothing buyer. Eventually she plans to market her own line of clothing. Her parents are Mr. and Mrs. Arthur Kuzniar, E. North Territorial Rd., Ann Arbor.

Wild Geese Eating 'Rocky' Ventrella Into Poorhouse

"I wish they'd find somebody else to take care of them," R. F. "Rocky" Ventrella, 8012 Riverview, Portage Lake, complains that the wild geese he has been feeding twice a day in the canal behind his home for the past four years are eating him into the poorhouse.

"They've consumed three tons of grain so far this year," he says. "I got 1,500 pounds of grain from Dunlavy Farms yesterday, and they've started on that already."

He hopes the birds don't desert him too soon, however. "There were 500 geese here this morning, and right now there are about 400. I hope they don't leave me holding the bag."

Two Autos Collide Because of Snowbank Obstructing Vision

Obstruction of vision caused by a large snowbank on the southeast corner of Central and Third Sts. was to blame for an accident which took place there Friday morning, Feb. 17, it was reported by the Washtenaw County Sheriff's Department.

According to the report, Mary Elizabeth Milligan, 39, of 3512 Central St., was headed west on Third St. and stopped at the Central St. intersection at 7:58 a.m., after which, unable to see because of the snow heaped at the corner, she pulled out into traffic and struck another automobile being driven north on Central St. by Arvalene Joyce Ackley, 34, of 20884 Waterloo Rd., Chelsea. Neither driver was injured, it was reported, and damage was slight.

Please Notify Us of Any Change in Address.

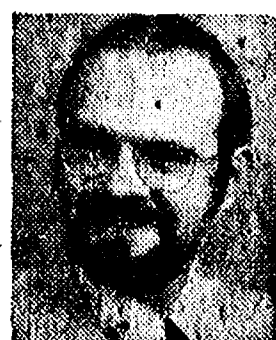
Mercantile Guardian

If you have a store, take just a minute for two questions:

Is your commercial insurance specialty rated by zone, to give you a price break because you are not in a big city or urbanized area?

Have you reviewed your coverage and your potential loss exposure with a commercial insurance specialist in the past year?

If "no" or "not sure" on either question, please call us at 475-8065.



Dave Rowe

FARM BUREAU INSURANCE GROUP

Farm Bureau Mutual • Farm Bureau Life • Community Service Insurance

Rep. Conlin Sponsoring Bill for School Bus Safety

If it means that even one child's life is saved in the state of Michigan, a bill requiring safety inspections for school buses every 60 days during the school year should be promptly enacted, State Representative Michael Conlin (R-23rd District), sponsor of the measure, said Friday.

"At present, school buses in Michigan only receive a mechanical and braking inspection annually from the State Police," Conlin said.

"My bill (H.B. 5985) would require all school buses operating in the state to be certified every 60 days in order to meet the minimum braking standards established by the Michigan State Police."

Conlin explained that safety specifications and testing procedures for the inspections, including brake safety defects, would be

established by the State Police and carried out according to rules set by the Board of Education. "Portable equipment to make these regular inspections is already in use in other states and is available at low cost," Conlin said. "Our State Police have tested it, and it meets their satisfaction."

"I don't think we can be too cautious with our children's lives," he said. "These 60-day inspections will ensure that all school buses are operating at the optimum, and I don't think we should settle for less."

Conlin said the bill has received bi-partisan support, and he anticipates prompt action on the measure by the House.

It is nearly as far from Copper Harbor in Michigan's Upper Peninsula to Detroit as it is from Detroit to New York City.

Thinking CARPET? Think SCHNEIDER'S

Visit the wonderful world of carpeting at Schneider's, one of the area's finest, full-service carpet stores, conveniently located in West Ann Arbor on Wagner Road between Jackson and Liberty.

Schneider's carries a broad selection of quality, name-brand carpets at prices consistently among the lowest in the entire area. Try us.

662-9332

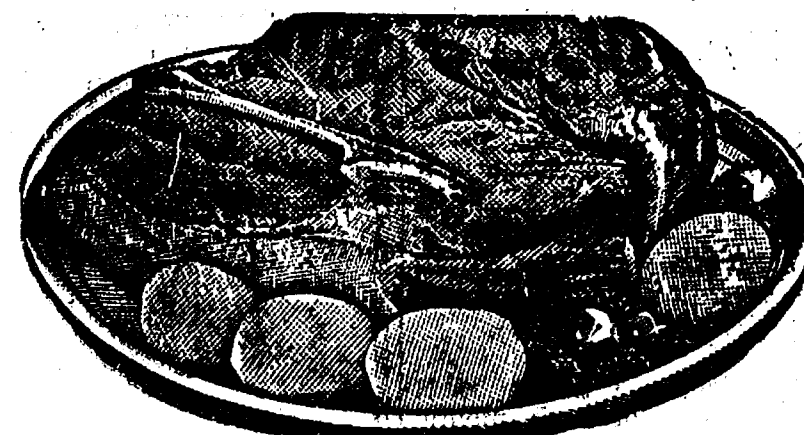
OPEN MON & FRI NIGHTS TIL 8:00 PM

SCHNEIDER-CARPET-ROOMS

745 S. WAGNER RD. ANN ARBOR

Jiffy market

Big Enough To Serve You . . . Small Enough To Know You!



Tender Beef with Flavor!

U.S.D.A. CHOICE RIB STEAKS

Large End \$1.49 lb.

JIFFY MARKET TASTIEST TENDEREST CHOICE MEATS

Blade Cut Chuck Roast	lb.	79¢
Center Cut Chuck Roasts	lb.	89¢
Arm Chuck Roast	lb.	\$1.19
English Roast	lb.	\$1.19
Beef Stew	lb.	\$1.19
Ground Chuck	lb.	\$1.19
Short Ribs	lb.	59¢

GROUND SEVERAL TIMES DAILY

HAMBURGER

Hamburg That You Will Enjoy!! lb. 89¢

FARMER PEET'S CHUNK BOLOGNA 99¢ lb.	FARMER PEET'S ALL-BEEF FRANKS 99¢ lb.	LEAN, TENDER PORK STEAK \$1.29 lb.	FARMER PEET'S HIGH ON THE HOG PORK SAUSAGE 1-Lb. Roll 99¢
--	--	---	---

U. S. No. 1 MICHIGAN

POTATOES

10-Lb. Bag 89¢

VELVET PEANUT BUTTER 1-Lb., 2-Oz. Jar \$1.19	VAN CAMP'S PORK & BEANS 1-Lb. Can 29¢	BUNNY POP POPCORN 2-Lb. Bag 39¢	HOLSUM HAMBURG or HOT DOG BUNS 8-Ct. Pkg. 49¢
---	--	--	--

FARM MAID HOMOGENIZED

MILK

Gallon \$1.29

FARM MAID FRESH ORANGE JUICE 1/2 gal. 79¢	FARM MAID FRESH COTTAGE CHEESE 1-Lb. Ctn. 59¢	FARM MAID HALF and HALF 16-Oz. Pt. 39¢	FARM MAID SOUR CREAM 8-Oz. 1/2-Pt. 39¢
--	--	---	---

WONDER

COUNTRY STYLE BREAD

1 1/4-Lb. Loaf 39¢

JIFFY MEAT SERVICE

CUSTOM CUTTING, WRAPPING, FREEZING.

QUICK SERVICE ON BUTCHERING —

YOUR BEEF OR OURS.

JIFFY MARATHON GAS PUMPS

REGULAR GAS 59.9

Includes All Taxes

- ★ U.S.D.A. CHOICE SIDES OF BEEF
- ★ LOCAL FARM GRAIN FED BEEF AVAILABLE
- ★ FRONTS - HINDS - WHOLE RIB - WHOLE LOINS
- ★ LOCAL FARM CORN-FED BEEF AVAILABLE

THANK YOU — We Appreciate Your Business!

Open With Complete Service, 7 Days A Week

TOP VALUE FOODS 7 a.m. MORNING to 10 p.m. NIGHTS

Sale Prices Feb. 23 Thru Feb. 26

Think Spring!

Forget about all this snow piled up around us and come in to see our new lines for Spring . . .

NEW MERCHANDISE

in
APPLIANCES - TV FURNITURE and STEREOs

We also have a limited number of items slightly dented or soiled from the recent snow disaster when our show windows were smashed. All offered at

BIG SAVINGS!

We need the room - help us clean out our warehouse.

MEABON'S TV, FURNITURE & APPL.

1170 M-52, Chelsea

Ph. 475-1666

Community Calendar

Week of Feb. 23-March 1, 1978

Modern Mothers will learn Cardio-Pulmonary Resuscitation at the Chelsea Hospital Feb. 28 and March 1, 8 p.m. Guests are invited.

Olive Chapter No. 140, Royal Arch Masons, Thursday, March 2, 6:30 p.m., pot-luck supper. Regular communications 7:30 p.m.

Woman's Club of Chelsea, Tuesday, Feb. 28, 8 p.m., at McKune Memorial Library.

North Lake Co-Op Nursery has openings in its 4-year-old sessions, or information contact Cindy Beauchamp, 475-8317.

Annual meeting of Inverness Men's Golf League at the clubhouse, Tuesday, March 21, 7:30 p.m. All teams must be represented.

Lyndon Township Board regular meetings the third Tuesday of each month, 7 p.m., in Lyndon Town Hall.

Chelsea Co-Op Nursery is now taking applications for the 1978-79 school year. To enroll, call Kay Johanson, 475-7763 or 475-8316.

Lions Club, first and third Tuesday of every month, 6:45 p.m. at Chelsea Community Hospital.

Dexter-Chelsea La Leche League, Tuesday, Feb. 28, 7:30 p.m., at the home of Becky Schoenberg, 118 Wilkinson (Chelsea), 475-1875. Meeting topic: "Art of Breastfeeding and Overcoming Difficulties."

Lima Township Board regular meeting the first Monday of the month, 8 p.m., at Lima Township Hall.

Chelsea Christian Men's Fellowship (non-denominational) prayer breakfast, the first Saturday of every month, 8 a.m., in the Chelsea Community Hospital dining room.

Washtenaw County Genealogical Society, Sunday, Feb. 26, at Washtenaw Community College, LMC Building, south entrance, first floor. Richard Hathaway of the State Library, Michigan Unit, will discuss "What is in the State Library." Program and business meeting, 2:30 p.m. Come at 1 p.m. for help with research.

Inverness Country Club, euchre party and pot-luck, Tuesday, March 7, 6:30 p.m., at the clubhouse. Ph. 475-7687 or 475-1133 for reservations.

Fifth annual Pioneer Arts and Crafts Fair, sponsored by the Dexter Area Historical Society, Saturday, March 18, 10 a.m. to 4 p.m., Dexter High school gym. Admission \$1 for adults; 50 cents, grades 9-12; free, grades 1-8. Watch for articles on craftsmen. Keep this date open; you'll be glad you did.

AA and Al-Anon meeting, Monday evenings at Chelsea Community Hospital, 8:30 p.m. Closed meetings.

Sylvan Township Board meeting the first Tuesday of the month, at 7 p.m., at Sylvan Township Hall.

Lima Township Planning Commission regular meeting the third Tuesday of every month, 8 p.m., at the Township Hall.

American Legion hospital equipment is available by contacting Larry Gaken at 475-7891.

Sharon Township Planning Commission regular meeting third Wednesday of each month. adv42tf

Sharon Township Board regular meeting first Thursday of each month, 8:30 p.m. adv42tf

Washtenaw Reading Council's third meeting of the year has been rescheduled from Jan. 26 to Feb. 2, at High Point Center, Washtenaw Intermediate School District.

Chelsea Day In Florida Set Feb. 26

Chelsea residents who flock south for the winter to escape the Michigan cold and snow will once again have the opportunity to reunite in Florida when Chelsea Day is celebrated Feb. 26.

As in past years, the event will begin with a 12 noon pot-luck at the Shockley Hills Clubhouse. Anything from a comparison of sun-tans to a discussion of the recent blizzard in Chelsea is expected to follow.

All Chelsea folks now in Florida are invited to attend, as are Chelsea residents tempted to jet down to Florida for the week-end simply to participate in the reunion. According to Mrs. Lulu Sweeney, who wrote to tell us of the event, directions to the clubhouse are as follows: "Six miles north of Umatilla on highway 19, one mile west on Alexander Spring Rd. to the Shockley Hill turn-off, and look for 'the clubhouse on the right.' Hope you'll get there."

Trades Day...

(Continued from page one) ad to qualify, salaries, state licensing, and other general information.

Any student in grades 9-12 is invited to attend these programs and should sign up for the area of his or her choice in the Counseling Center.

1819 Wagner Rd., Ann Arbor. Bookmen's Exhibit, 4:30-7 p.m.; "Both Ends of the Rainbow," a presentation by Dr. Mary Bigler of EMU, 7-8 p.m.; sandwich supper by reservation, 5-6:30 p.m. To make reservations, call Reading Services, 769-6522, Ext. 238.

Chelsea Senior Citizens meet the third Friday of each month, 8 p.m., at St. Mary's school. Pot-luck, games and cards.

Lyndon Township Planning Commission meets the second Thursday of the month at the Township Hall, 8 p.m. adv42tf

Chelsea Rebekah Lodge No. 130, the first and third Tuesday of every month, 7:30 p.m., at the Temple.



TRUCKLOAD FURNITURE SALE

SAVE UP TO 40%

30 BIG HOURS

Thurs. & Sat., Feb. 23 and 24 8:30 to 5:30
Fri., Feb. 24 8:30 to 8:30



SAVE
\$131⁹⁵
ON EACH
SOFA

REG. TO \$429.95

3 SOFA STYLES... YOUR CHOICE

Elegant sofas in Scotchgard® treated velvet, Herculan® olefin or leather-look vinyl. Stylefoam cushions reverse.

\$298

SOFA FLOOR SAMPLE \$188

Close-Out as low as

U-HAUL



SAVE
Up to
\$120

REG. FROM \$498

SOFA SLEEPERS... YOUR CHOICE

Your choice of queen or full size styles in popular upholstery fabrics. Sleeper has innerspring mattress, adjustable TV headrest.

FULL SIZE \$348
QUEEN SIZE \$378

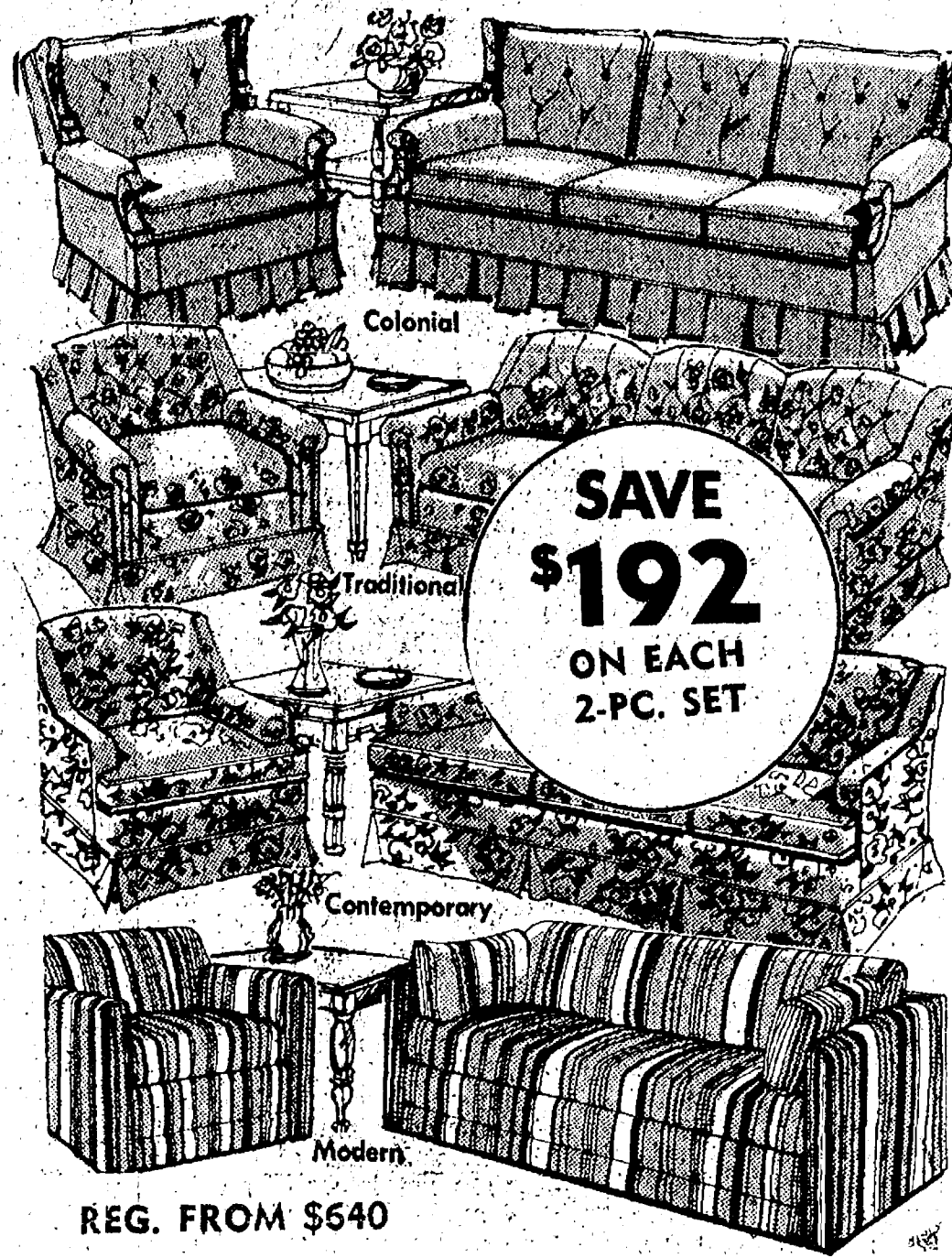
FLOOR SAMPLE CLOSE-OUTS, Reg. Size, from \$288

MATTRESS-BOX SPRING COMBINATION

	TWIN	FULL
GOOD 2-Pc. Set	\$98 ⁰⁰	\$148 ⁰⁰
	2-PC. SET	2-PC. SET
BETTER 2-Pc. Set	\$108 ⁰⁰	\$168 ⁰⁰
	2-PC. SET	2-PC. SET
BEST 2-Pc. Set	\$118 ⁰⁰	\$188 ⁰⁰
	2-PC. SET	2-PC. SET

CHARGE IT

TERMS AVAILABLE ON OUR FAMILY PURCHASE PLAN



SAVE
\$192
ON EACH
2-PC. SET

REG. FROM \$640

2-PC. LIVING ROOMS... YOUR CHOICE

Luxuriously styled matching sofa and chair sets. Decorator fabrics and colors in rich textures. Stylefoam-reversible cushions.

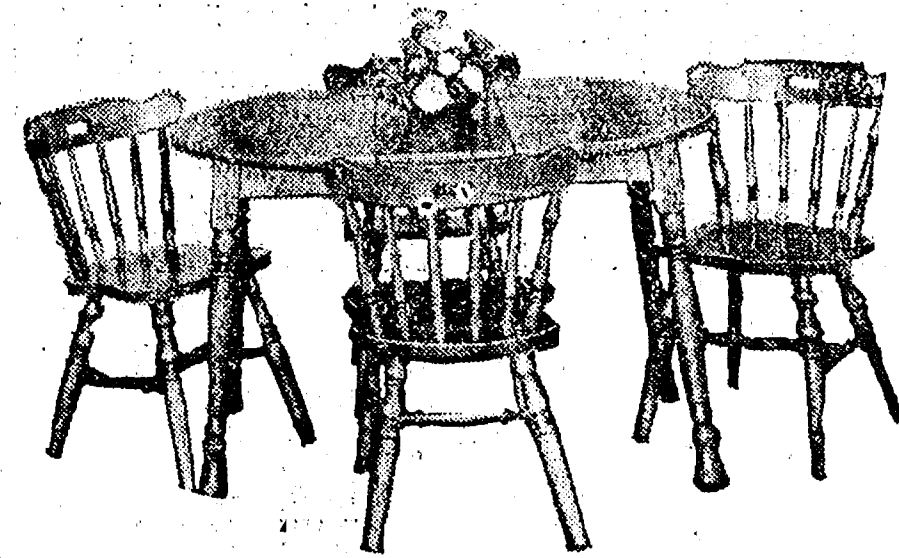
\$448

SOFA WITH MATCHING SWIVEL ROCKER \$468

Reg. \$660. 2-Pc. Set only

2-PC. SET — Floor Sample \$388

Close-Out, 2-Pc. Set, from



5-PC. MAPLE DINETTE SET

Table with 4 chairs \$188
Reg. \$299.95. Only

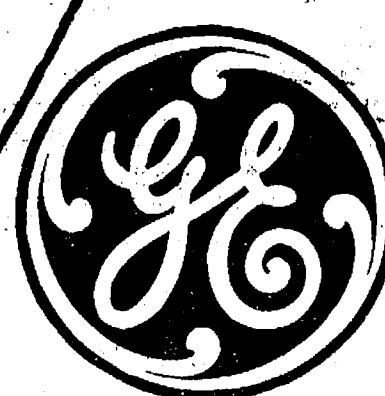
MATCHING MAPLE HUTCH \$188



FLOOR SAMPLE
SAVINGS
FAMOUS NAME
ROCKERS
and
RECLINERS

U-Haul
and SAVE!
Prices Start at \$68

From now through March 5, 1978, GE has reduced its prices in varying amounts on these selected models, so you may get big savings.



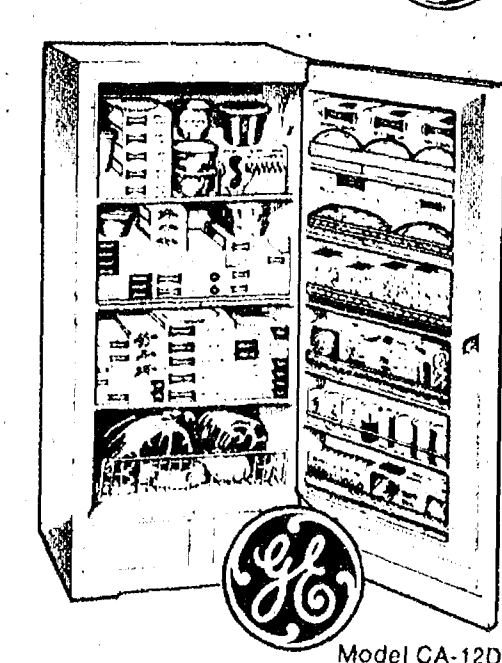
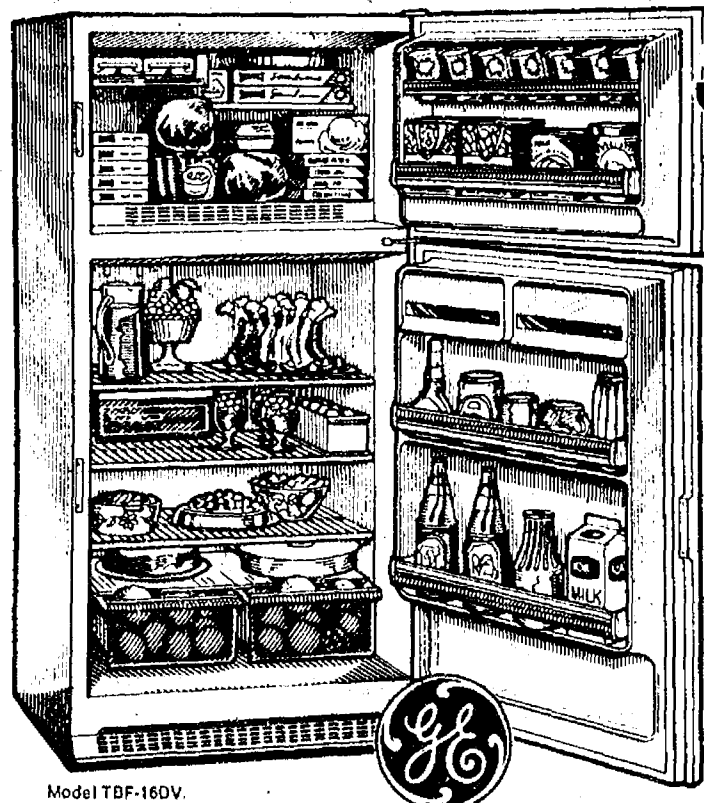
GE Great Annual Red Tag Sale!

Save \$40

General Electric
Quality-Built
15.6 cu. ft. No-Frost
Refrigerator-
Freezer

Only 30 1/2" wide — and equipped with ENERGY SAVER Switch... can help reduce cost of operation.
• 4.30 cu. ft. freezer • Two Ice'n Easy Trays • Slide-Out Meat Keeper
• Roll-out on wheels for easy cleaning
• Automatic Ice Maker Available (optional, extra)

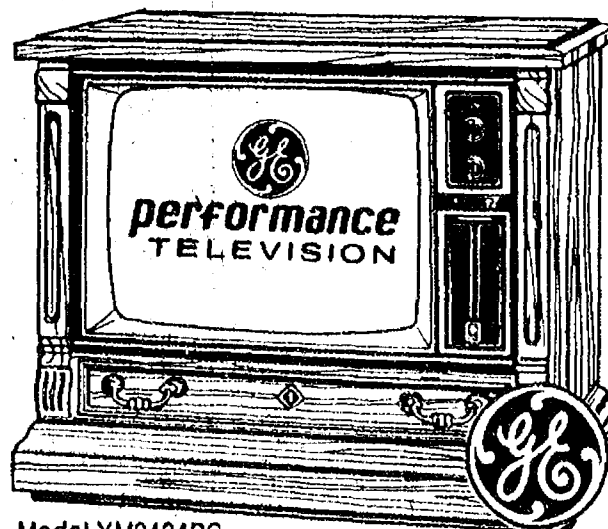
Regular Price \$509.00
Less "Red Tag" DISCOUNT \$40
YOU PAY ONLY \$469⁹⁵



SAVE \$30

GE Quality-Built 11.6 cu. ft. Upright Freezer. Only 28" wide. 3 Refrigerated Shelves plus top cold-plate. Door Lock.

Regular Price \$329.00
Less "Red Tag" DISCOUNT \$30
YOU PAY ONLY \$299⁰⁰



Model YM9424PC
Distressed pecan finish on hardwood solids, wood composition board and simulated wood accents.

SAVE \$70

GE 25" diagonal COLOR TV with VCR "Broadcast Controlled" Color! Adjusts color/tint automatically 60 times a second!

Regular Price \$719.00
Less "Red Tag" DISCOUNT \$70
YOU PAY ONLY \$649⁹⁵

HEYDLAUFF'S

113 N. Main St., Chelsea Ph. 475-1221

SHOP NOW & SAVE!

THURSDAY - FRIDAY - SATURDAY



Real Estate

By PAUL FRISINGER

REALTOR

THE PRE-OWNED HOME

"Pre-owned" is a euphemism for a home you acquire second-hand or fifth (or even tenth) in the case of a heritage house. According to the National Association of Realtors, Americans purchase approximately 3 million homes annually. Of these, some 2½ million are pre-owned homes. What accounts for their popularity?

Beyond the very practical advantages offered by older homes they exert an emotional appeal as well. Charm is a major factor; so too are individuality, and privacy resulting from hedges and full grown trees.

In addition to these intangibles, the old home offers a

wider choice of selection — there are approximately two to three times as many existing dwellings as new homes on the market today. However, you should take a careful look at basic systems, such as plumbing, heating and electricity to be sure they are up to current standards.

If there is anything we can do to help you in the field of real estate, please phone or drop in at FRISINGER REALTY CO., 935 S. Main St., Chelsea. Phone: 475-8681; evenings 475-2621. We're here to help!

JCs Invite Prospective Members to Meeting

All area men between the ages of 18 and 35 are targets of the 1978 Chelsea Jaycee Membership Drive which will begin with a general membership meeting open to guests on Tuesday, March 7, 7:30 p.m., in the basement of Chelsea Lanes.

Two speakers from the Michigan Jaycees, Mel Morell and Bob Vining, will be featured at the meeting, which should prove interesting and entertaining for those assembled as the two will vie for the Michigan Jaycee presidency in June.

Refreshments will be served upon adjournment and prospective members will have an opportunity to discuss the programs and goals of the local organization with those Jaycee members present.

Activities of the Jaycees generally fall into one of four broad categories—community service, leadership training, ways and means, and youth involvement. Jaycees also sponsor a number of social functions, many of which are designed to encourage family participation.

Furthermore, Jaycees work closely with the Chelsea Jaycee Auxiliary on a variety of projects, and the two groups convene for joint dinner meetings throughout the year to further the diversity of experience within both groups and to promote new ideas.

The Chelsea Jaycee chapter was founded in 1955. Since that time, it has won many awards and recognition at state and national levels for the outstanding quality of its achievements.

Historical Society Calls Special Meet

A special meeting of the Chelsea Area Historical Society is set for Feb. 27, 8 p.m. at McKune Memorial Library to review and vote on a proposal made by Darryl Flugg. This meeting will replace the regular March 13 meeting of the group.

Flugg, a Chelsea resident, has approached the historical society for sponsorship of a Comprehensive Employment Training Act (CETA)-funded photography project. For a period of six months, Flugg will photograph and assemble the "Faces and Places of Chelsea."

It is necessary that a local organization offer sponsorship of federally-funded educational training projects of this type.

The historical society's Board of Directors previewed Flugg's proposal at a previous meeting and also examined other samples of his work. As a result, the board feels Flugg's proposed project will be a worthwhile undertaking and hopes the general membership will concur with its opinion.

In addition to discussing the photography project at the Feb. 27 meeting, historical society members will have an opportunity to set goals for the coming year.

The public is always welcome to attend.

Public Forum Slated on School Millage Election

A public forum meeting to discuss the March 6 school millage election has been slated for Monday, Feb. 27, 8 p.m., in the Chelsea High school board room.

The meeting will be conducted by the Chelsea Board of Education and all voters in the Chelsea School District are urged to attend.

THE CHELSEA STANDARD

Second Section

CHELSEA, MICHIGAN, THURSDAY, FEBRUARY 23, 1978

Pages 7-14



WALL MURALS COMPLETED: Putting the finishing touches on an 8'x20' panel that will soon form part of a wall mural to be mounted in the new Holland-American Wafer Co. plant in Grand Rapids is Mrs. Bonnie Janes, who was commissioned by the cookie manufacturing firm to design and paint a wall mural for the plant

to make it a more interesting place for workers and visitors alike. This particular panel is loaded with a colorful array of animals, including a gorilla, a zebra, an elephant, a pig, a kangaroo, an alligator, a snake, some mice, and two chicks. All seem to be enjoying their cookies.

Bonnie Janes Paints 27 Huge Murals for Walls of New Cookie Plant in Grand Rapids

A vivid imagination and constant practice have marked the successful artist through the centuries and Bonnie Janes of Gregory is no exception.

The daughter of two artists, Mrs. Janes began painting in a loft at home as a teen-ager, continued her dabbling through the years, and just recently achieved her first commercial success with the creation of 27 panels that will form a painted mural to be installed this month in the new 76,000-sq. ft. Holland-American Wafer Co. plant in Grand Rapids.

The Holland-American Wafer Co., a cookie manufacturing firm, commissioned the Gregory mother of three last summer to fill the bare walls of their new plant with innovative and creative shapes that would make the plant a more interesting place for both workers and the children who regularly tour the plant.

At the suggestion of her brother, Bob Croly, a Grand Rapids architect who helped design the plant, Mrs. Janes decided to paint a variety of animal scenes.

"Though I was told not to limit myself, I'm best at drawing animals so it seemed only natural that I'd paint groups of animals together for the mural," Mrs. Janes said.

Her panels are full of imaginative critters, some eating cookies, some standing in various positions and grinning, and others simply looking out at those who will come to view them. While she painted some animals, such as a brown bear, with realistic colors to their skins, fantasy shapes and colors did appear on Mrs. Janes' canvasses.

For example, an orange rhinoceros flaunts its girth across one of the murals, while the humps of a blue camel stand out in another.

Of the 27 panels made from the lightweight, foam-filled art board selected for the mural by Mrs. Janes and framed in wood by her husband, Carson, three measure out at 8'x12'; two at 8'x20'; and the rest at 4'x8'.

"They are really magnificent," Phyllis Nye, co-partner with Mrs. Janes at Chelsea's Country Craftique, reported after viewing the creations.

The panels, which will be bolted together for mounting on the walls of the cookie plant, were completed in February, some six months after they were started.

Some of the animals have been positioned so that their mouths will coincide with wall openings showing sections of a conveyor belt from Holland-American Wafer Co.'s cookie ovens, and it will look like cookies are flowing out of the animals' mouths.

When children touring the plant are taken up a staircase to a glass-enclosed "wrapping room," they will be able to look down on one entire wall of murals unobstructed by plant machinery. And, should the children want a closer look, they will be able to return to the main floor, walk next to the 20-foot high wall, and take in the animals placed some 4½ feet up off the floor line.

Currently Mrs. Janes is hoping to receive another contract with the cookie firm to paint some animals on machines in the plant to further develop the



A COLORFUL MACAW munches a sugar wafer in one of the 26 panels designed and painted by Bonnie Janes, left, which will be bolted together to form a wall mural for the new Holland-American Wafer Co. plant, a cookie manufacturing firm in

Grand Rapids which has operated since 1919. With Mrs. Janes in the photo is her husband, Carson, who constructed wood frames for the panels. In addition to freelancing as an artist, Mrs. Janes is co-owner of Country Craftique on Main St.

theme she first proposed to the company using scale pencil drawings to demonstrate her idea. Although other bidders submitted drawings, those by Mrs. Janes were the ones selected.

The project was the first undertaking of its kind for Mrs. Janes.

Other than working a short time for Jon Lockhart, an Ann Arbor portrait artist, and painting a laboratory wall at Comshare, Inc., the Ann Arbor time-sharing computer firm where her husband works, Mrs. Janes said she had no previous mural experience, or experience in marketing her art.

"I hadn't really tried to find

any work as an artist before this because I wanted to be home painting," Mrs. Janes said. She also remained home to care for her three children, Judy, Jill and Jeff, who all currently attend Chelsea High school.

Then, nearly two years ago, Mrs. Janes and Mrs. Nye teamed up to open Country Craftique and it seemed only natural that Mrs. Janes put her creative talents to use at the fabric and craft store. She then found herself taking advantage of other opportunities to extend the boundaries of her professional accomplishments.

At Country Craftique, Mrs. Janes designed and constructed

the sandwich board doll that appeared outside the store front at Christmastime to announce the sale of gift certificates, and her work continues to grace the store's Main St. display window. Outside of her work at the store, and in addition to seeking another contract with the Holland-American Wafer Co., Mrs. Janes is investigating the possibilities of designing fabric murals to be mounted in banks, offices, and other small-scale firms.

Very specific in how she views her work as an artist, Mrs. Janes said, "I consider myself a designer whose basic trade is imagination."

CLOSE-OUT ON ODDS & ENDS OF PAINT

Mistakes - Odd Lots - Discontinued Items
All Colors - No White

\$2.00 per gal. - 75¢ per pt.

CHELSEA HARDWARE

110 S. MAIN ST.

PHONE 475-1121

475-2030
475-8765

115 PARK ST.
CHELSEA, MICH.

MAYER AGENCY

(of Springer-Kleinschmidt Agency Inc.)

Your Local Independent Insurance Agency providing dependable protection and prompt claim payment through 10 of the nation's leading insurance companies.

HOME - AUTO - BUSINESS INSURANCE



Sheridan W. Springer
Ruth DeVine

Charles A. Kleinschmidt
Micky Quackenbush

RICK'S MARKET

20490 M-52

"The Store with the Spartan on the Door"

Phone 475-2898

BETTY CROCKER

POTATO
BUDS

28-Oz.
Pkg. \$1.29

JACK RABBIT

KIDNEY
BEANS

1-Lb.
Can 57¢

PANTRY
POPCORN

2-Lb.
Bag 39¢

HOME-MADE
PIZZA

from
RICK'S OVENS
TAKING
ORDERS

from
4 p.m. to 9 p.m.
Wednesday
thru
Sunday

ECKRICH

SMOK-Y-
LINKS

10-Oz.
Pkg. 99¢

BORDEN

LO-FAT
MILK

\$1.19 gal.

BORDEN

COTTAGE
CHEESE

1-Lb.
Crtn. 65¢

BORDEN'S GLACIER CLUB

ICE CREAM . . 1/2 gal. 99¢

RICK'S HOT BREAD DAILY

Weekdays by 3:30 p.m. Sat. & Sun., by 10:30 a.m.

(QUANTITY RIGHTS RESERVED)

**Ads
Taken
Till 1 p.m.
Tuesday**

PUT IT IN THE WANT ADS FOR RESULTS

**Just
Phone
475-1371**

WANT ADS

The Chelsea Standard WANT AD RATES

PAID IN ADVANCE—All regular advertisements, 75 cents for 25 words or less, each insertion. Count each line as a word. For more than 25 words add 3 cents per word for each insertion. "Pilot" ads or box number ads, 50c extra per insertion.

CHARGE RATES—Same as cash in advance, with 25 cents bookkeeping charge if not paid before 1 p.m. Tuesday preceding publication. Pay in advance, send cash or stamps and save 25 cents.

DISPLAY WANT ADS—Rate, \$1.40 per column inch, single column width, only 8-point and 10-point type only. No borders or boldface type. Minimum 1 inch.

CARDS OF THANKS or MEMORIALS—Single paragraph style, \$1.50 per insertion for 25 words or less, 2 cents per word beyond 25 words.

COPY DEADLINE—1 p.m. Tuesday week of publication.

ERRORS—Advertisers should check their ads the first publication. This newspaper will not be liable for failure to publish an ad or any typographic errors in publication except to the extent of the cost of the ad for the first week's insertion. Adjustment for errors is limited to the cost of portion of the ad wherein the error occurred.

NEEDED—Someone to board my 2 dogs until my new home is built. Prefer someone on farm. Terms negotiable. Ph. 421-6783, evening, or 353-5000 days. x32tf

C—Custom Built Homes

O—h! We Remodel you

U—can count on us

N—o Job Too Small

T—rim Inside & Out

R—ough-in Only If

Y—ou Want to Finish

S—iding Aluminum, 5" Gutters

I—mmediate Attention

D—ALE COOK & CO.

E—stimates, Free

BUILDERS

Please Call

475-9153

DALE COOK

17tf

Fireplace Builder

field stone mason, block and brick

FREE ESTIMATES

Call 475-9025 after 3 p.m.

Patrick Grammatico

x40tf

BODY SHOP

COMPLETE FULL TIME

Estimates Available

PALMER FORD

222 S. Main 475-1301

40tf

Headquarters for

RED WING

WORK SHOES

Foster's Men's Wear

40tf

21tf

WANT ADS

FOR SALE — Brown eggs, 12075 Island Lake Rd., Dexter, Ph. 428-2782. x30

R. L. BAUER Builders

LICENSED and INSURED
Custom Building
Houses - Garages
Pole Barns
Roofing - Siding
Concrete Work
FREE ESTIMATES
Call 475-1218

KIWANIS ORANGES again, order by Feb. 25. Delivery March 8. Oranges, \$3.50 per case, grapefruit, \$3.50. Call any Kiwanian or Ph. 475-1301. x37

TYPISTS and CLERKS

NEEDED for temporary job assignments in the Ann Arbor area. No fees. Call Sue Zink at 971-1631 for more information.

Gerry Rushing Temporary Help Service

FOR SALE — 1977 Oldsmobile Cutlass, 4 door, air, radio. Salesman's car. Very good condition. Low price, high miles. Only \$3,400 firm. 59,000 miles. Ph. 475-7681. x37

THORNTON 475-8628

acres. Huge family room, 3 bedrooms, garage, 12 miles west of Saline in Manchester School District. \$35,000. NEW LISTING — Beautiful 1,800 sq. ft. bi-level situated on 10-plus acres. YOUR KIND OF HOME — Lovely custom home in the country for the family interested in easy maintenance. Nicely stained woodwork, large closets, extra insulation, 4 bedrooms, 10 acres. \$77,500.

COUNTRY DELIGHT — Family home on 5 gorgeous acres. Take immediate possession and move right in! 3 bedrooms, fireplace, 1st fl. laundry. Much more. \$52,500.

BETTER HURRY! See this cozy lakefront home today. Nice fire- place, 3 bedrooms. Enjoy a beautiful lake view from the deck. \$43,000.

ROBERT H. THORNTON JR., P.C. REALTOR

EVENINGS:
Helen Lancaster 475-1198
Barb Rybak 475-8498
Mark McKenna 475-8424
Lang Ramsay 475-8133
Pat Starkey 475-8544
Pat Yeutter 475-2221
George Knickerbocker 475-2646
Chuck Walters 475-2808
37tf

McCulloch

Portable Generators
Chain Saws

WE SELL SERVICE, SHARPEN AND TRADE.

Chelsea Hardware

21tf

WANT ADS

FOR RENT — Fair Service Center for meetings, parties, wedding receptions, etc. Weekdays or week-ends. Contact John Wehnitz, phone 475-1818. x31tf

HEATING SPECIALISTS

HILLTOP INC.
8816 Werkner Rd., Chelsea.

PARTS

A hard to find item? Call us.

NEW INSTALLATION

Want the best? Call us.

SERVICE

Furnace out? Call us.

475-2949

"Serving the area
for over 20 years" x26tf

FOR SALE — Beautiful hand-made
quilt. Ph. 428-4357. x39

WEBER HOMES Opens New Model

Located near the corner of Bush
Rd. and Lingane Rd.
Saturday and Sunday
2 p.m. to 6 p.m.

Drive out this week-end and inspect
our designs for today's contem-
porary living. We think they're ex-
citing.

WEBER HOMES

475-2828; evenings, 475-2857. x37

FUEL ATTENDANTS WANTED —
We need fuel attendants for full-
time work for fueling cars and
diesel trucks. Good wages and
benefits. Must be 18 or out of
school. Apply in person, 8 a.m. to
8 p.m., Union 76 Truck Plaza, 1-34
and Baker Rd., Dexter exit. x37
1974 CHEVELLE — V-8, auto. \$2495.
Lloyd Bridges Chevrolet, Chelsea.
Ph. 475-1373. x37

SAND GRAVEL

KLINK EXCAVATING

Backhoe
Road Work - Basements
Trucking - Crane Work
Top Soil - Demolition
Drainfield - Septic Tank
Trenching, 5" up

Industrial, Residential, Commercial
CALL 475-7631 13tf

W. A. THOMAS COMPANY

1035 N. Fletcher Rd.
Chelsea

HELP WANTED

An equal opportunity employer. x33tf

WE HAVE LISTINGS in the Dex-
ter, Chelsea, and Lakes areas.
Call us for your next home.

ED COY REALTY

426-3948
Member Ann Arbor Board
of Realtors

Ed Coy 426-8235

Rae Kozlowski 426-8874

List your home with us x10tf

LAND CONTRACTS & MORT-
GAGES wanted — Land contracts
purchased, any amount, anywhere
in Michigan. Lowest discounts.
Can also make real estate mort-
gages. Call Dan Duncanson any
time, Ann Arbor Real Estate Co.,
668-8505. 27tf

MAUSOLEUMS ★ MONUMENTS
BRONZE TABLETS ★ MARKERS

BECKER
MEMORIALS

6933 Jackson Road
ANN ARBOR, MICHIGAN

71tf

1974 MONTE CARLO — V-8 auto.,
32,000 miles. Lloyd Bridges
Chevrolet, Chelsea, Ph. 475-1373.
x37

WANT ADS

Complete Body Repair Service

Bumping — Painting
Windshield and Side Glass
Replacement

Free Pick-up and Delivery
Open Monday Until 8

CONTACT DON KNOLL
FOR FREE ESTIMATE

Village
Motor Sales, Inc.

CHRYSLER — DODGE
PLYMOUTH — DODGE TRUCKS

Phone 475-8681

1185 Manchester Rd., Chelsea

Hours: 8 a.m. to 5:30 p.m.

9 a.m. to 1 p.m. Saturday

Tues. thru Fri. Until 8 Monday

x14tf

1974 CAMARO — V-8, auto., AM
FM, 32,000 miles. Lloyd Bridges
Chevrolet, Chelsea. Ph. 475-1373.
x37

LEONARD REITH

Master Plumber

Licensed Electrician

Hot Water Heat

18238 N. Territorial
Rd.

Chelsea, Mich. 48118

Phone: 475-2044

52tf

FOR RENT:

Music Machines

Juke Boxes

For Parties,
Receptions or
Any Special Gathering.

CALL

Zemke

Operated Machines

Days 862-1771 x38tf

RON MONTANGE
CONSTRUCTION

—Full carpentry services
(rough & finish)

—Additions & remodeling

—Garages

—Repairs

—Roofing and Siding

—Cabinets & formica work

—Farm Buildings

—Excavating & trenching

QUALITY WORKMANSHIP
FREE ESTIMATES

Ph. 475-1080 19tf

J. R. CARRUTHERS

LICENSED
RESIDENTIAL BUILDER

CUSTOM HOMES

ADDITIONS/FIREPLACES

PATIO

ROOFING/SIDING/REPAIRS

475-7234

CHELSEA 30tf

Land Contracts and
Mortgages Wanted

LAND CONTRACTS purchased,
any amount, anywhere in Mich-
igan. Lowest discounts. Can also
make real estate mortgages.
Call Dan Duncanson anytime, Ann
Arbor Real Estate Co., 668-8505.
71tf

1974 MONTE CARLO — V-8 auto.,
32,000 miles. Lloyd Bridges
Chevrolet, Chelsea, Ph. 475-1373.
x37

WANT ADS

CORRECTIVE HORSESHOEING
and trimming. Mike Brisbois,
Ph. 561-3038. x43tf

VACUUM CLEANERS

Authorized Electrolux
sales and service.

James Cox

428-8444, or 428-9688

118 Riverside Dr., Manchester 48tf

ATTIC
INSULATION

Class I

Cellulose Insulation

installed by trained

installers

FOAM

WALL INSULATION

Highest thermal efficiency
of any insulation type.

New and Existing Construction.

FOAM MASTERS

Complete insulation contractor
Licensed and Insured.

475-1625

Free Estimates x31tf

Automotive

Rust Proofing

Cars and Trucks

Village
Motor Sales, Inc.

CHRYSLER — DODGE
PLYMOUTH — DODGE TRUCKS

Phone 475-8681

1185 Manchester Rd., Chelsea

Hours: 8 a.m. to 5:30 p.m.

Tues. thru Fri. Until 8 Monday

9 a.m. to 1 p.m. Saturday 21tf

KIWANIS ORANGES again, order
by Feb. 25. Delivery March 8.
Oranges, \$3.50 per case; grape-
fruit, \$3.50. Call any Kiwanian or
Ph. 475-1301. x37

Help Wanted

Qualified personnel needed in in-
spection and tool making depart-
ments.

W. A. Thomas Co.

1035 N. Fletcher Rd. Ph. 475-8628

An equal opportunity employer. x35tf

PIANO LESSONS in my home. Ex-
perienced, references. Ph. 475-
9523. x37

FOR SALE — 1973 Chevrolet Im-
pala. Ph. 475-7639 after 4 p.m. x88

QUASAR
TELEVISION

Sales & Service

Service on most major brands.
Also, antenna installation and
antenna supplies.

PORTER'S TV

212 Buchanan St., Chelsea

Ph. 475-8380

CERTIFIED INCOME TAX SERV-
ICE, one week preparation. Sen-
ior Citizens, Homestead Property
Tax, Michigan and Federal Taxes.
Ph. 475-2250, evenings and week-
ends. x33tf

FOR SALE — Unicorn log splitters
for tractors, trucks and garden
tractors. \$275 to \$325. Call 475-8316
for free demonstration. Demonstra-
tion every Saturday at 1 p.m. 10195
Easton Rd., Dexter, MI. x37

— YOUNG —

We list and sell lake, country and
town properties. Eugene Young,
Real Estate & Builder, 878-3792,
1596 Dexter-Pinckney Rd., Pinck-
ney 48169. x34tf

PIANO TUNING and repair. Qual-
ified technician. Call Ron Har-
ris, 475-7134. x10tf

CASH FOR
LAND CONTRACTS

Any type of real estate
throughout Michigan
No commissions or costs
First National Accept,
Call Free 1-800-292-1350

WANT ADS

CARPENTER WORK — Inside or
out. Mr. Coburn, 475-2883. 10tf

HELP WANTED — Experienced
cosmetologist with references in
Stockbridge area. Ph. (517) 851-
7213. x22tf

SKIS FOR SALE — K-2 Twos 200
cm. skis. Great powder skis.
Only \$20 or best offer. May be
seen at Chelsea Standard office, or
phone 862-0524 after 5 p.m. x25tf

STEP UP TO

KOZMA

CONSTRUCTION

And

Step

Down

In

Price

LICENSED
BUILDER

FREE ESTIMATES

COMPLETE
CONSTRUCTION
SERVICES

CALL

LEN KOZMA

475-7452 29tf

FOR SALE — Fantastic building
site, 9 terraced acres with spring-
fed pond on Madden Rd. in Dexter
school district. Call Midwest Brok-
ers, 994-0700. x25tf

ROOMS by day, week or month.
Excellent for the single man or
retiree. Sylvan Hotel, Chelsea. Ph.
475-2911. x31tf

ROOFING SPECIALIST — All types
of roof repairs, homes, barns,
commercial. Insurance repairs. As-
phalt shingles, hot built-up roofing,
cedar-shingle tile-asbestos. Awnings
and porch enclosures. Siding and
storm windows. Call Joe Hayes for
free estimates. Manchester, 428-
8520. x39tf

SEAMLESS ALUMINUM eaves-
troughs, roofing, siding, and
carpentry work of all kinds. Ex-
perienced installers. All

LITTLE WANT ADS! BIG PLUSES FOR BIG RESULTS!

JUST PHONE
475-1371

WANT ADS

HELP WANTED—Sarah Coventry jewelry. Management and Sales. Full and part-time. Free jewelry kit, free training, good money. Ph. (313) 878-9647 (Pinckney) between 8 a.m. and 5 p.m. x37

KIWANIS ORANGES again, order by Feb. 25. Delivery March 8. Oranges, \$9.50 per case; grapefruit, \$8.50. Call any Kiwanian or Ph. 475-1301. x37

WANTED—Fordson tractor, pre-WWII, any condition. Ph. 483-8275 evenings. x38

WANT ADS

OUR BUSINESS IS SELLING BUSINESSES. Weir Associates
Wolverine Tower - Suite 701
3001 South State Rd.
Ann Arbor, Mich. 48104
Ph. 769-1615 anytime x38

1978 BUICK DEMOS

LE SABRE Custom 2-dr. hardtop, V-8, auto., p.s., p.b., AM-FM, air. Only 2,000 miles. SAVE-SAVE-SAVE.

CENTURY Custom wagon, 6-cyl., auto., air, AM-FM, luggage rack, cruise control. Only 2,100 miles. SAVE-SAVE-SAVE.

USED CARS

1978 OLDS Toronado Brougham 2-dr. hardtop. Sun roof, leather trim, full power. Fully equipped, air. Factory official's car. Only 4,000 miles. \$12,081.35 list. Only \$9,250.

1977 BUICK Century Special 2-dr. hardtop, V-6, auto., p.s., p.b., speed control, air, AM-FM stereo. One owner. Only \$4495.

1975 BUICK Electra Custom 4-dr. hardtop, full power, fully equipped. One owner, 29,000 miles. Only \$3,695.

1974 DATSUN 1/2-ton pick-up, 4-cyl., td. trans., AM radio. Only \$2,195.

NEW HOURS

Mon., Tues., Wed., Fri., 8:00-5:30
Thurs., 8:00-9:00
Sat., 9:00-1:00

SPRAGUE

Buick-Olds-Opel, Inc.
1500 S. Main St., Chelsea
Ph. 475-8864 x38f

\$75,000

TOOL AUCTION

Saturday, March 18
6:30 p.m.

at the Chelsea Rod and Gun Club

From Chelsea, take M-52, 3 miles north to Waterloo Rd. then west 1 1/2 miles to club sign. Then left 1/2 mile. Drill presses, bench grinders, floor jacks, chargers, air tools, compressors, vices, socket sets, wrench sets, hand tools, electric tools, over 150 different items.

Door Prize 6:30 p.m.

AUCTIONEER: BOB REDMAN
Ph. (517) 688-3386. x40

1977 CAMARO — 7,000 miles. V-8, auto., AM-FM. Lloyd Bridges Chevrolet, Chelsea. Ph. 475-1373. x37

LOST—Reward, baby's pet, Siamese cat. Please return to us. Lost in vicinity of Schoolhouse Apts. Ph. 475-1079 or 428-8286. 37

1972 DODGE Dart. Like new. Lloyd Bridges Chevrolet, Chelsea. Ph. 475-1373. x37

1971 FORD station wagon, V-8, auto., p.s. 1. \$205

1972 CHEVY Bel Air 4-dr., V-8, auto., p.s. \$695

1972 CHRYSLER Newport 4-dr., V-8, auto., p.s., p.b., air cond., powerlocks. \$995

1971 FORD station wagon, V-8, auto., p.s. 1. \$205

1972 CHEVY Bel Air 4-dr., V-8, auto., p.s. \$695

1972 CHRYSLER Newport 4-dr., V-8, auto., p.s., p.b., air cond., powerlocks. \$995

1971 FORD station wagon, V-8, auto., p.s. 1. \$205

1972 CHEVY Bel Air 4-dr., V-8, auto., p.s. \$695

1972 CHRYSLER Newport 4-dr., V-8, auto., p.s., p.b., air cond., powerlocks. \$995

1971 FORD station wagon, V-8, auto., p.s. 1. \$205

1972 CHEVY Bel Air 4-dr., V-8, auto., p.s. \$695

1972 CHRYSLER Newport 4-dr., V-8, auto., p.s., p.b., air cond., powerlocks. \$995

1971 FORD station wagon, V-8, auto., p.s. 1. \$205

1972 CHEVY Bel Air 4-dr., V-8, auto., p.s. \$695

1972 CHRYSLER Newport 4-dr., V-8, auto., p.s., p.b., air cond., powerlocks. \$995

1971 FORD station wagon, V-8, auto., p.s. 1. \$205

1972 CHEVY Bel Air 4-dr., V-8, auto., p.s. \$695

1972 CHRYSLER Newport 4-dr., V-8, auto., p.s., p.b., air cond., powerlocks. \$995

1971 FORD station wagon, V-8, auto., p.s. 1. \$205

1972 CHEVY Bel Air 4-dr., V-8, auto., p.s. \$695

1972 CHRYSLER Newport 4-dr., V-8, auto., p.s., p.b., air cond., powerlocks. \$995

1971 FORD station wagon, V-8, auto., p.s. 1. \$205

1972 CHEVY Bel Air 4-dr., V-8, auto., p.s. \$695

1972 CHRYSLER Newport 4-dr., V-8, auto., p.s., p.b., air cond., powerlocks. \$995

1971 FORD station wagon, V-8, auto., p.s. 1. \$205

1972 CHEVY Bel Air 4-dr., V-8, auto., p.s. \$695

1972 CHRYSLER Newport 4-dr., V-8, auto., p.s., p.b., air cond., powerlocks. \$995

1971 FORD station wagon, V-8, auto., p.s. 1. \$205

1972 CHEVY Bel Air 4-dr., V-8, auto., p.s. \$695

1972 CHRYSLER Newport 4-dr., V-8, auto., p.s., p.b., air cond., powerlocks. \$995

WANT ADS

WANTED—House to rent. Mature couple. references on request. Ph. 428-5449. x39

FIREWOOD—\$35 per cord, delivered. Ph. 428-3362. x37

1976 DODGE 3/4-ton 4-wheel drive, V-8, auto. Lloyd Bridges Chevrolet, Chelsea. Ph. 475-1373. x37

Clearance Sale

New '77
Cars & Trucks
In Stock

'77 DODGE D-200 van conversion. V-8, auto., p.s., p.b., AM-FM stereo 8-track, carpeted thru-out, captain's chairs. SAVE

'77 DODGE W-150, 4-wheel drive, 115-in. wheelbase, Macho pkg., 360, auto., p.s., p.b., AM-FM stereo. SAVE

DEMO

'78 LE BARON Medallion 4-dr., 318, auto., p.s., p.b., leather interior, air, etc. SAVE

'78 VOLARE coupe, 225, auto., p.s., p.b., bucket seats, stereo SAVE

Driver Training Car

'78 ASPEN Custom 4-dr., 6-cyl., auto., p.s. SAVE

Used Trucks

'76 DODGE E-100, 6 1/2-ft. box, 360, auto., p.s., p.b., air, AM-FM, 11,845 miles. \$3795

'76 CHEVY Van, 350, auto., p.b., camper conversion. R 4212 tires. \$4295

'75 PLYMOUTH Voyager Sport, V-8, auto., p.s., p.b., air cond. \$4995

'75 PLYMOUTH Voyager, 318, auto., p.s., p.b., low mileage. \$3095

'75 CHEVY Suburban, 350, auto., p.s., p.b., air, Sure-Grip, Scott's dale pkg. \$2995

'67 FORD 1/2-ton pick-up, 6-cyl., 3-speed. \$495

Quality Used Cars

'76 VOLARE Premier 4-dr., 225, auto., p.s., p.b., air, AM-FM, radial tires, low mileage \$3695

'76 ASPEN SE 2-dr., 318, 4-speed overdrive, p.s., p.b., air, Road Wheels, radial tires, low mileage. \$3695

'76 PINTO Runabout, 4-speed, low mileage. \$2395

'73 OLDS Custom Cruiser wagon, V-8, auto., p.s., p.b., air. \$1495

'72 PLYMOUTH Fury 4-dr., 360, auto., p.s., p.b., air cond., one owner. \$995

'72 CHEVY Bel Air 4-dr., V-8, auto., p.s. \$695

'72 CHRYSLER Newport 4-dr., V-8, auto., p.s., p.b., air cond., powerlocks. \$995

'71 FORD station wagon, V-8, auto., p.s. 1. \$205

'72 CHEVY Bel Air 4-dr., V-8, auto., p.s. \$695

'72 CHRYSLER Newport 4-dr., V-8, auto., p.s., p.b., air cond., powerlocks. \$995

'71 FORD station wagon, V-8, auto., p.s. 1. \$205

'72 CHEVY Bel Air 4-dr., V-8, auto., p.s. \$695

'72 CHRYSLER Newport 4-dr., V-8, auto., p.s., p.b., air cond., powerlocks. \$995

'71 FORD station wagon, V-8, auto., p.s. 1. \$205

'72 CHEVY Bel Air 4-dr., V-8, auto., p.s. \$695

'72 CHRYSLER Newport 4-dr., V-8, auto., p.s., p.b., air cond., powerlocks. \$995

'71 FORD station wagon, V-8, auto., p.s. 1. \$205

'72 CHEVY Bel Air 4-dr., V-8, auto., p.s. \$695

'72 CHRYSLER Newport 4-dr., V-8, auto., p.s., p.b., air cond., powerlocks. \$995

'71 FORD station wagon, V-8, auto., p.s. 1. \$205

'72 CHEVY Bel Air 4-dr., V-8, auto., p.s. \$695

'72 CHRYSLER Newport 4-dr., V-8, auto., p.s., p.b., air cond., powerlocks. \$995

'71 FORD station wagon, V-8, auto., p.s. 1. \$205

'72 CHEVY Bel Air 4-dr., V-8, auto., p.s. \$695

'72 CHRYSLER Newport 4-dr., V-8, auto., p.s., p.b., air cond., powerlocks. \$995

'71 FORD station wagon, V-8, auto., p.s. 1. \$205

'72 CHEVY Bel Air 4-dr., V-8, auto., p.s. \$695

'72 CHRYSLER Newport 4-dr., V-8, auto., p.s., p.b., air cond., powerlocks. \$995

'71 FORD station wagon, V-8, auto., p.s. 1. \$205

'72 CHEVY Bel Air 4-dr., V-8, auto., p.s. \$695

'72 CHRYSLER Newport 4-dr., V-8, auto., p.s., p.b., air cond., powerlocks. \$995

'71 FORD station wagon, V-8, auto., p.s. 1. \$205

'72 CHEVY Bel Air 4-dr., V-8, auto., p.s. \$695

'72 CHRYSLER Newport 4-dr., V-8, auto., p.s., p.b., air cond., powerlocks. \$995

'71 FORD station wagon, V-8, auto., p.s. 1. \$205

'72 CHEVY Bel Air 4-dr., V-8, auto., p.s. \$695

'72 CHRYSLER Newport 4-dr., V-8, auto., p.s., p.b., air cond., powerlocks. \$995

'71 FORD station wagon, V-8, auto., p.s. 1. \$205

'72 CHEVY Bel Air 4-dr., V-8, auto., p.s. \$695

'72 CHRYSLER Newport 4-dr., V-8, auto., p.s., p.b., air cond., powerlocks. \$995

'71 FORD station wagon, V-8, auto., p.s. 1. \$205

'72 CHEVY Bel Air 4-dr., V-8, auto., p.s. \$695

WANT ADS

HOMEMAKER WANTED to work limited hours for family service agency in western Washtenaw. No educational requirements, but necessary. Ph. 971-6528 for information. x37

HAVE READY BUYERS for lake or lake access homes up to \$60,000. Call Larry Bane, 769-5010, or eves and week-ends, 434-5789. Centennial Real Estate. x38

CB, RADIO, STEREO and PHONOGRAPH REPAIR

Second Class License
THE MUSIC HUTCH
8407 Main St., Dexter
426-4380 x26f

TRI - COUNTY SPORTSMAN'S CLUB having annual wild game dinner, Feb. 26, at 8840 Moon Rd., Saline. Variety of game plus ham. Serving from 12 noon to 4 p.m. Adults, \$3.50; children under 12, \$1.75. Public invited. x37

FOR SALE — Sunflower seeds for birds. 25-lb. bag, \$4. 50-lb. bag, \$7.50. Ph. 426-8404. x42

All Insurance Needs

In the convenience of your own home — or mine

N. H. Miles, Allstate

Call Only 475-8334

Pierson & Riemenschneider

475-9101

LAKE PROPERTY — Beautiful 3-bedroom home on Clear Lake. Special features include an extra-large tree-shaded lot, open staircase, fieldstone fireplace and finished basement. A homeowner's dream! \$75,000. Call for an appointment to discuss whether it meets your needs.

BIG AND BEAUTIFUL—Distinctive 4-bedroom home on 10.5 fenced acres in Waterloo Rec. Area. Outbuildings fully equipped for animals and workshop. Private pond and stream. \$92,500. Call for an appointment to see.

KING-SIZE FAMILY HOME — 2,800 sq. feet featuring a large kitchen, 4 bedrooms, family room and rec. room with fireplace. Good price too! \$53,000. Call for an appointment to visit.

VILLAGE OF CHELSEA — Well-kept older 3-bedroom home in nice neighborhood. Close to schools and shopping. Features an extra-large garage-barn. \$37,500. Call for an appointment to inspect.

Pierson & Riemenschneider

REALTORS

111 Park St. - 475-9201

Pat Merkel 475-1824

John Pierson 475-2084

Jeanene Riemenschneider 475-1469

37f

HELP WANTED — Day-time car hops wanted, full and part-time. Ph. 475-2055. Chelsea A&W. x38

FOR RENT—Trailer space in Chelsea Mobile Home Park. Ph. 1-553-3344. x40

REAL ESTATE

3-BEDROOM 24'x50' Modular home on full basement. Excellent location, country living, 4" deep well. Stove and refrigerator included. Three acres of land, in the Stockbridge area. \$36,900. CO 7143.

VILLAGE HOME on corner lot in Stockbridge. This 4 - bedroom home has an updated kitchen, 2 baths, carpeting and 2-car garage. \$37,500. ST 7132.

PLEASANT SETTING for this 3-bedroom ranch only 2 years old. Nice 2 1/2-acre lot with ideal garden spot on muck. Full, walk-out basement. \$37,900. CO 7011.

GROCERY STORE & Gas Station doing excellent gross, on M-52. Beer and wine taken also. 3 apartments for rent or living quarters for owners. Price reduced. Good business opportunity for ambitious person. \$57,900. CID-1 7088.

SPACIOUS 4-bedroom, 2-story village home in excellent repair. Beautiful carpet and paneling throughout. You must see this to appreciate the value. \$34,900. ST 6854.

LOOKING FOR VACANT LAND with the barn already there? 40 acres, muck tillable on blacktop road, newer pole barn and large old barn with new roof. Terms to be arranged. \$34,900. VA 7052.

CALL (517) 851-8444

Howell Town & Country, Inc.

Stockbridge Office

HELP US GO TO WASHINGTON—Cadette Girl Scout Troop 98 announces their spring flea market will be March 18 at Sylvan Township Hall, 9-4.

SELLERS WANT OFFERS — 190 acres prime farm land near Waterloo Recreation Area includes large remodeled farm house, dividable property fronts on three roads. Right party can convert to cross-country ski club while holding as long-term investment. Reduced price, \$900 per acre. Blanchard & Associates, Inc., 662-7731 or 769-9492. x37f

FOR SALE — Simplicity 16 h.p. garden tractor with auto. trans., mower, and rototiller. 1952. John Deere B with three-point hitch, scraper blade, new tires. Ph. (517) 598-2284, between 4-9 p.m. x38

ANY HOME REPAIRS NO JOB TOO SMALL

Get ready for spring. Roofing, painting and caulking, window cleaning, janitorial. Anything from basement to roof, inside or out. 10% discount through April 1. Guaranteed work, 5 years experience. Ph. 973-2099 for free estimate. x38

Instant passport photos.

★ In full color

★ All official sizes.

★ Professional quality.

GUENTHER STUDIO

115 Park St., Chelsea

475-1225

WANT ADS

FOR SALE — Registered Mini-Schnauzer, 3 years old, male. Gentle with children. Ph. 426-8148. x37

HELP WANTED—Part-time. Must be 18 or older. Stuckey's Pecan Shoppe. Ph. 475-7334 for appointment. x37

HOST wakes up brightness, fluffs the nap as it dries cleans your carpet. Rent the HOST machine. Merkel Home Furnishings, Chelsea, 475-8821. x37

HELP WANTED—A light manufacturing firm. Apply in person.

Astro Manufacturing Co., 7090 Dexter Rd., Dexter. x38

CAREFREE INSULATION, old or new homes. Blanket or blown. Estimates, terms. Call 995-0637. x36

FREE—Schnauzer terrier puppies, 2 females, shots, to good home. Ph. 475-2488. x38

RALEIGH PRODUCTS now available in your area. Ph. 475-8275. x4

TOOL MAKER AND SET-UP PERSON WANTED — Opening available for tool maker-set-up person on medical and photographic components. Milling machines, lathes, and more. Automotive. Pay commensurate with ability. Reply to Mac-Dee, Inc., Chelsea, Michigan, 475-9165. x37

FOR SALE—74 Monte Carlo, factory air and all power. \$2,200. Ph. 426-9297. x37

FOR SALE—1975 Coachman 8 ft. truck camper. Excellent condition. Ph. 426-4923 after 5 p.m. x37

FOR SALE—1974 Mustang II Ghia. Air conditioning, AM-FM stereo, rust-proofed, 4-speed standard, excellent condition. 48,000 miles. Ph. 426-2887. x37

1976 FORD GRANADA—Excellent condition. 6-cylinder, automatic, 24,000 miles. \$2,950. Ph. 426-2174 after 5 p.m. x37

WORK WANTED—I am 16, have had carpentry experience, and need a job. Call 475-7380. x37

FOR SALE—Three bi-level homes, one finished and located in nice small town. One 80 percent finished and on five acres. All priced to sell. Ph. Arthur Allen, (517) 851-7800. x39

FOR SALE—Two matching living room chairs. Best offer. Ph. 475-9632. x37

WILL BABYSIT in my home, Monday through Friday. Ph. 475-8053 after 6 p.m. x39

FOR RENT—Upstairs apartment on Park St., one bedroom, living room. Single man preferable. Ph. (517) 522-8759. x38

LOST—Black lab lost by North Lake. Ph. 475-2063 or 475-7475. x38

FOR SALE—1965 Chevy II, 250, 1971 tent trailer camper, \$250. Ph. 475-8524. x37

FOR SALE—Electric base guitar with Univox amplifier. Like new. Hoover portable professional type hair dryer. Never used. Ph. 475-1555 after 4:30 p.m. or anytime week-ends. x37

FOR RENT—In Chelsea, 1-bedroom apartment. Ph. 663-8953.

+ Services in Our Churches +

ZION LUTHERAN CHURCH
Corner of Fletcher, Waters Rds.
The Rev. John R. Morris, Pastor
Saturday, Feb. 25—
7:30 a.m.—Men's Prayer and Study Breakfast.
9:00 a.m. to 12 noon—8th grade Youth instruction only.
Sunday, Feb. 26—
9:00 a.m.—Sunday school.
10:15 a.m.—Worship. Visitor's Sunday.
Monday, Feb. 27—
8:00 p.m.—Senior Choir.
Tuesday, Feb. 28—
4:00 p.m.—Junior Choir.
7:30 p.m.—Shuffleboard.
Wednesday, March 1—
7:30 p.m.—Lent Meditations.

FIRST ASSEMBLY OF GOD
The Rev. Richard Coury, Pastor
Every Sunday—
9:45 a.m.—Sunday school.
11:00 a.m.—Worship service.
8:00 p.m.—Evening worship.
Every Wednesday—
7:00 p.m.—Christ's Ambassadors, Missionettes, Bible meditation and prayer.

BAHA'I FIRESIDE
Every Thursday—
8:00 p.m.—At the home of Toby Peterson, 705 S. Main St. Anyone wishing to learn about the Baha'i faith is welcome.

METHODIST HOME CHAPEL
Chaplain Ira Wood, Pastor
Every Sunday—
8:45 a.m.—Worship service.

OUR SAVIOR LUTHERAN CHURCH
1515 S. Main, Chelsea
The Rev. William H. Keller, Pastor
Sunday, Feb. 26—
9:00 a.m.—Sunday school and Bible classes.
10:30 a.m.—Worship service.
2:30 p.m. to 4:30 p.m.—"Life With God."
Tuesday, Feb. 28—
9:30 a.m. to 11:30 a.m.—"Life With God."

NORTH SHARON BIBLE CHURCH
Sylvan and Washburne Rds.
The Rev. Ronald C. Purkey, Pastor
Every Sunday—
10:00 a.m.—Sunday school.
11:00 a.m.—Worship service.
8:00 p.m.—Senior High Youth meeting. Youth Choir.
7:00 p.m.—Evening worship service. (Nursery available.) All services interpreted for the deaf.
Every Wednesday—
7:00 p.m.—Bible study and prayer meeting. (Nursery available.) Bus transportation available; 428 7222.

WATERLOO VILLAGE UNITED METHODIST CHURCH
8118 Washington St.
The Rev. Glenn Kjellberg, Pastor
Every Sunday—
10:00 a.m.—Sunday school.
11:15 a.m.—Worship service.

FAITH EVANGELICAL LUTHERAN CHURCH
9375 North Territorial Rd., Dexter
The Rev. John P. Huebner, Pastor
Every Sunday—
9:00 a.m.—Worship service.
10:00 a.m.—Sunday school for ages 4-11. Teen classes for 7th-12th graders.
Every Wednesday—
8:00 p.m.—Lenten services through Easter.

CONGREGATIONAL CHURCH
(United Church of Christ)
The Rev. Carl Schwarza, Pastor
Sunday, Feb. 26—
10:30 a.m.—Worship and church school.
11:30 a.m.—Membership coffee hour. Canvass and Memorial committees.

CHURCH OF JESUS CHRIST OF LATTER-DAY SAINTS
Meetings at
Church of Jesus Christ of Latter-Day Saints
2141 Brockman, Ann Arbor
Every Sunday—
9:30 a.m.—Sunday school.

FIRST UNITED METHODIST CHURCH
The Rev. Marvin H. McCallum, Pastor
Thursday, Feb. 23—
7:15 p.m.—Spiritual Growth class.
7:30 p.m.—Work Area of Education.
Sunday, Feb. 26—
10:00 a.m.—Worship service (crib nursery for infants up to the age of two, church school for children ages 2-5).
10:20 a.m.—Church school for children from kindergarten through 6th grade.
11:00 a.m.—Junior high church school. Adult Discussion Group. Coffee and punch hour.
11:10 a.m.—Senior high church school.
Monday, Feb. 27—
7:30 p.m.—Church school teachers in the Education Building.
8:00 p.m.—Retirement Homes meeting in Ypsilanti.
Wednesday, March 1—
3:30 p.m.—KINDER Choir.
4:00 p.m.—Praise Choir.
7:00 p.m.—Youth Leaders meeting.
8:00 p.m.—Chancel Choir.
Thursday, March 2—
7:15 p.m.—Spiritual Growth class.
7:30 p.m.—Board of Trustees in the Litteral Room.

ST. THOMAS EVANGELICAL LUTHERAN
Ellsworth and Haab Rds.
The Rev. Jerome Dykstra, Pastor
Sunday, Feb. 26—
9:30 a.m.—Sunday school, Bible classes, and Confirmation classes.
10:45 a.m.—Worship service.

ST. JOHN'S UNITED CHURCH OF CHRIST
Rogers Corners
Every Sunday—
10:30 a.m.—Worship service.

BETHEL EVANGELICAL AND REFORMED CHURCH
(United Church of Christ)
Freedom Township
The Rev. Roman A. Reineck, Pastor
Every Sunday—
10:00 a.m.—Worship service.

GREGORY BAPTIST CHURCH
Every Sunday—
9:45 a.m.—Sunday school.
11:00 a.m.—Morning worship.
8:00 p.m.—Young people.
7:00 p.m.—Evening worship.
7:30 p.m.—Thursday mid-week worship service.

ST. JACOB EVANGELICAL LUTHERAN CHURCH
12501 Rietmiller Rd., Grass Lake
The Rev. Andrew Bloom, Pastor
Every Sunday—
9:00 a.m.—Worship service.
10:15 a.m.—Divine services.

FIRST UNITED PRESBYTERIAN CHURCH
Unadilla
The Rev. T. H. Liang, Pastor
Every Sunday—
9:45 a.m.—Sunday school.
11:00 a.m.—Worship service.

ST. PAUL UNITED CHURCH OF CHRIST
The Rev. R. J. Ratzlaff, Pastor
Saturday, Feb. 25—
9:00 a.m.—Confirmation.
Sunday, Feb. 26—
9:00 a.m.—Church school.
10:30 a.m.—Worship service and church school.
Wednesday, March 1—
3:30 p.m.—Junior Choir.
Thursday, March 2—
7:30 p.m.—Lenten Search Study Group at the Hamiltons.

ST. MARY CATHOLIC CHURCH
The Rev. Fr. David Philip Dupuis, Pastor
Mass Schedule:
Every Saturday—
4:00-5:00 p.m. Confession.
7:00 p.m.—Mass.
Immediately after 7 p.m. Mass, Confession.
Every Sunday—
8:00 a.m., 10:00 a.m., 12:00 noon—Mass.

ST. BARNABAS EPISCOPAL CHURCH
20550 Old US-12
The Rev. Fr. Jerrold F. Beaumont, B.S.P.
Every Sunday—
10:00 a.m.—Holy Communion first, third, and fifth Sundays, and 7:30 p.m. every Wednesday.
10:00 a.m.—Morning prayer. Second and fourth Sundays. Church school and nursery every Sunday.
Every Wednesday—
8:15 p.m.—Bible study and discussion groups.
First Wednesday of every month—Bishop's Committee.
Third Thursday of every month—Episcopal church women.

CHELSEA FREE METHODIST FELLOWSHIP
Meetings at St. Barnabas Episcopal Church
20550 Old US-12
The Rev. William L. Cryderman, Pastor
Call 475-8853 for information.
Every Sunday—
4:00 p.m.—Worship service.
5:00 p.m.—Adult Bible Study and Sunday school for all ages.
Every Wednesday—
3:30 p.m.—Junior Choir at the Pratt residence, 625 N. Main St.
Every Thursday—
7:00 p.m.—Prayer meeting at the church except for the third Thursday of every month. Family Night in homes, call for location.

CHELSEA BAPTIST CHURCH
The Rev. James Stacey, Pastor
377 Wilkinson St.
Every Sunday—
9:45 a.m.—Sunday school for the whole family.
11:00 a.m.—Morning worship service and children's church.
6:00 p.m.—Evening service, informal singing, sharing, study and discussion. (Nursery care provided for all services).
Home Bible Studies each week in the homes of the elders.
For information, call 475-8323.

FIRST UNITED METHODIST PARKS AND TERRITORIAL RDS.
The Rev. Glenn Kjellberg, Pastor
Every Sunday—
9:15 a.m.—Morning worship.
10:00 a.m.—Sunday school.

CHURCH OF CHRIST
13661 Old US-12, East
Evangelist John M. Hamilton
Every Sunday—
10:00 a.m.—Church school.
11:00 a.m.—Worship service. Nursery will be available.
Every Wednesday—
7:30 p.m.—Bible study.

IMMANUEL BIBLE CHURCH
145 E. Summit St.
The Rev. LeRoy Johnson, Pastor
Every Sunday—
9:45 a.m.—Sunday school, nursery provided.
6:00 p.m.—Evening worship.
Every Wednesday—
7:00 p.m.—Family hour, prayer meeting and Bible study.

ST. JACOB EVANGELICAL LUTHERAN CHURCH
12501 Rietmiller Rd., Grass Lake
The Rev. Andrew Bloom, Pastor
Every Sunday—
9:00 a.m.—Worship service.
10:15 a.m.—Divine services.

FIRST UNITED PRESBYTERIAN CHURCH
Unadilla
The Rev. T. H. Liang, Pastor
Every Sunday—
9:45 a.m.—Sunday school.
11:00 a.m.—Worship service.

ST. JACOB EVANGELICAL LUTHERAN CHURCH
12501 Rietmiller Rd., Grass Lake
The Rev. Andrew Bloom, Pastor
Every Sunday—
9:00 a.m.—Worship service.
10:15 a.m.—Divine services.

FIRST UNITED PRESBYTERIAN CHURCH
Unadilla
The Rev. T. H. Liang, Pastor
Every Sunday—
9:45 a.m.—Sunday school.
11:00 a.m.—Worship service.

ST. JACOB EVANGELICAL LUTHERAN CHURCH
12501 Rietmiller Rd., Grass Lake
The Rev. Andrew Bloom, Pastor
Every Sunday—
9:00 a.m.—Worship service.
10:15 a.m.—Divine services.

FIRST UNITED PRESBYTERIAN CHURCH
Unadilla
The Rev. T. H. Liang, Pastor
Every Sunday—
9:45 a.m.—Sunday school.
11:00 a.m.—Worship service.

ST. JACOB EVANGELICAL LUTHERAN CHURCH
12501 Rietmiller Rd., Grass Lake
The Rev. Andrew Bloom, Pastor
Every Sunday—
9:00 a.m.—Worship service.
10:15 a.m.—Divine services.

FIRST UNITED PRESBYTERIAN CHURCH
Unadilla
The Rev. T. H. Liang, Pastor
Every Sunday—
9:45 a.m.—Sunday school.
11:00 a.m.—Worship service.

ST. JACOB EVANGELICAL LUTHERAN CHURCH
12501 Rietmiller Rd., Grass Lake
The Rev. Andrew Bloom, Pastor
Every Sunday—
9:00 a.m.—Worship service.
10:15 a.m.—Divine services.

SALEM GROVE UNITED METHODIST CHURCH
3320 Notten Rd.
The Rev. Gerald R. Parker, Pastor
Every Sunday—
9:30 a.m.—Sunday school.
10:30 a.m.—Worship service.

ST. JOHNS EVANGELICAL AND REFORMED CHURCH
(United Church of Christ)
Francisco
The Rev. Virgil King, Pastor
Every Sunday—
9:30 a.m.—Sunday school.
10:30 a.m.—Church services.

FIRST CHURCH OF CHRIST SCIENTIST
1833 Washtenaw Ave., Ann Arbor
Every Sunday—
10:30 a.m.—Sunday school, morning service.

NORTH LAKE UNITED METHODIST CHURCH
The Rev. John Elliott, Pastor
Every Sunday—
10:00 a.m.—Church school.
10:00 a.m.—Worship service.

Steamy Little Speedster
The first automobile to surpass two miles a minute in a one-mile run was powered by steam. Fred Marriott drove his Stanley Steamer a mile in 28-15th seconds on a straightway at Orlando Beach, Fla., on Jan. 27, 1906. While steamers gradually disappeared from the open road, Henry Ford Museum, Dearborn, offers visitors an opportunity to see steamers as well as other types of vehicles in its Transportation Collections.
Subscribe today to The Standard!

★ **A 24-hour Hotline**
★ **Accurate and reliable drug information and identification**
★ **Extensive referral information**
★ **Free long term counseling**
★ **Drug Education presentations**
★ **Assertiveness, empathy and suicide prevention training**

CALL 994-HELP
(994-HELP/994-HELP/DRUG HELP is Federally licensed for substance abuse counseling.)

AMENDMENT TO LYNDON TOWNSHIP ZONING ORDINANCE

The Township of Lyndon hereby ordains:

An Amendment to the Lyndon Township Zoning Ordinance and Map:

The Lyndon Township Zoning Ordinance and Map is hereby amended by rezoning the property hereinafter described from Low Density Residential to Agricultural Residential:

PARCEL I — Dennis R. Burke, Owner
Commencing at the West 1/4 corner of Section 36, T1S, R3E, Lyndon Township, Washtenaw County, Michigan; thence N 84°-37'-50" E 840.18 feet along the East and West 1/4 line of said section and the centerline of Waterloo Road to the POINT OF BEGINNING; thence N 02°-08'-10" W 937.97 feet; thence N 88°-08'-30" E 472.25 feet to a point on the East line of the West 1/4 of the Northwest 1/4 of said section; thence S 02°-08'-10" E 909.00 feet along said East line to a point on the East and West 1/4 line of said section and the centerline of Waterloo Road; thence S 84°-37'-50" W 473.00 feet along said East and West 1/4 line and said centerline to the Point of Beginning, said parcel being a part of the West 1/4 of the Northwest 1/4 of Section 36, T1S, R3E, Lyndon Township, Washtenaw County, Michigan and containing 10.01 acres of land more or less. Being subject to the rights of the public over the Northernly 33 feet of Waterloo Road; also being subject to easements and restrictions of record, if any.

PARCEL II — Dennis R. Burke, Owner
Beginning at the West 1/4 corner of Section 36, T1S, R3E, Lyndon Township, Washtenaw County, Michigan; thence N 01°-51'-30" W 60.11 feet along the West line of said Section and the centerline of Mester Road; thence N 84°-37'-50" E 334.03 feet; thence N 01°-51'-30" W 591.19 feet; thence N 38°-43'-00" E 418.21 feet; thence N 88°-08'-30" E 228.64 feet; thence S 02°-08'-10" E 937.97 feet to a point on the East and West 1/4 line of said Section and the centerline of Waterloo Road; thence S 84°-37'-50" W 840.18 feet along the East and West 1/4 line of said Section and the centerline of Waterloo Road to the Point of Beginning, said parcel being a part of the West 1/4 of the Northwest 1/4 of Section 36, T1S, R3E, Lyndon Township, Washtenaw County, Michigan, and containing 10.48 acres of land, more or less, being subject to the rights of the public over the Northernly 33 feet of Waterloo Road and the Easterly 33 feet of Mester Road; also being subject to easements and restrictions of record, if any.

PARCEL III — Robert H. Warner, Owner
Commencing at the West 1/4 corner of Section 36, T1S, R3E, Lyndon Township, Washtenaw County, Michigan; thence N 01°-51'-30" W 671.75 feet along the West line of said Section and the centerline of Mester Road to the POINT OF BEGINNING; thence continuing N 01°-51'-30" W 384.25 feet along said West line and said centerline; thence continuing N 01°-51'-30" W 480.75 feet along the West line of said Section; thence N 88°-08'-30" E 605.42 feet; thence S 01°-51'-30" E 547.34 feet; thence S 38°-43'-00" W 418.21 feet; thence S 88°-08'-30" W 333.40 feet to the Point of Beginning, said parcel being a part of the West 1/4 of the Northwest 1/4 of Section 36, T1S, R3E, Lyndon Township, Washtenaw County, Michigan, and containing 11.03 acres of land, more or less, being subject to the rights of the public over the Easterly 33 feet of Mester Road, also being subject to easements and restrictions of record, if any.

PARCEL IV — Weber Construction Company, Owner
Commencing at the Northwest corner of Section 36, T1S, R3E, Lyndon Township, Washtenaw County, Michigan; thence S 01°-51'-30" E 238.00 feet along the West line of said Section and the centerline of Mester Road to the POINT OF BEGINNING; thence N 88°-08'-30" E 421.96 feet; thence S 01°-51'-30" E 552.66 feet; thence S 88°-08'-30" W 605.42 feet to a point on the West line of said Section; thence N 01°-51'-30" W 293.64 feet along said West line to a point on the centerline of Mester Road; thence continuing N 01°-51'-30" W 568.04 feet along said West line and said centerline to the Point of Beginning, said parcel being a part of the West 1/4 of the Northwest 1/4 of Section 36, T1S, R3E, Lyndon Township, Washtenaw County, Michigan, and containing 11.58 acres of land, more or less, being subject to the rights of the public over the Easterly 33 feet of Mester Road, also being subject to easements and restrictions of record, if any. Also having and granting the rights of ingress and egress over a 66 foot wide strip of land having a centerline described as follows: Commencing at the Northwest corner of said Section 36, thence S 01°-51'-30" E 238.00 feet along the West line of said Section and the centerline of Mester Road to the POINT OF BEGINNING; thence N 88°-08'-30" E 455.00 feet; thence N 85°-08'-30" E 255.00 feet; thence N 06°-38'-30" E 182.00 feet; thence N 38°-23'-30" E 145.00 feet; thence N 86°-48'-50" E 139.96 feet to the POINT OF TERMINATION.

PARCEL V — Harold Thompson, Owner
Commencing at the Northwest corner of Section 36, T1S, R3E, Lyndon Township, Washtenaw County, Michigan; thence S 01°-51'-30" E 238.00 feet along the West line of said Section and the centerline of Mester Road; thence N 88°-08'-30" E 421.96 feet to the POINT OF BEGINNING; thence continuing N 88°-08'-30" E 33.04 feet; thence S 87°-48'-10" E 496.99 feet; thence S 02°-08'-10" E 1413.54 feet thence S 88°-08'-30" W 350.45 feet; thence N 01°-51'-30" W 1100.00 feet; thence N 30°-00'-50" W 392.20 feet to the Point of Beginning, said parcel being a part of the West 1/2 of the Northwest 1/4 of Section 36, T1S, R3E, Lyndon Township, Washtenaw County, Michigan and containing 12.08 acres of land, more or less, being subject to easements and restrictions of record, if any. Also having and granting the rights of ingress and egress over a 66 foot wide strip of land having a centerline described as follows: Commencing at the Northwest corner of said Section 36, thence S 01°-51'-30" E 238.00 feet along the West line of said Section and the centerline of Mester Road to the POINT OF BEGINNING; thence N 88°-08'-30" E 455.00 feet; thence N 03°-51'-30" W 270.00 feet; thence N 85°-08'-30" E 255.00 feet; thence N 53°-38'-30" E 92.00 feet; thence S 33°-32'-50" E 404.73 feet to the midpoint of a 75 foot radius cul-de-sac, said midpoint being the POINT OF TERMINATION.

PARCEL VI — Weber Construction Company, Owner
Commencing at the Northwest corner of Section 36, T1S, R3E, Lyndon Township, Washtenaw County, Michigan; thence S 01°-51'-30" E 238.00 feet along the West line of said Section and the centerline of Mester Road; thence N 88°-08'-30" E 455.00 feet; thence S 87°-48'-10" E 496.99 feet to the POINT OF BEGINNING; thence continuing S 87°-48'-10" E 351.45 feet to a point on the East line of the West 1/2 of the Northwest 1/4 of said Section; thence S 02°-08'-10" E 1388.58 feet along said East line; thence S 88°-08'-30" W 350.44 feet; thence N 02°-08'-10" W 1413.54 feet to the Point of Beginning, said parcel being a part of the West 1/2 of the Northwest 1/4 of Section 36, T1S, R3E, Lyndon Township,

Washtenaw County, Michigan, and containing 11.27 acres of land, more or less, being subject to easements and restrictions of record, if any. Also having and granting the rights of ingress and egress over a 66 foot wide strip of land having a centerline described as follows: Commencing at the Northwest corner of said Section 36, thence S 01°-51'-30" E 238.00 feet along the West line of said Section and the centerline of Mester Road to the POINT OF BEGINNING; thence N 88°-08'-30" E 455.00 feet; thence N 03°-51'-30" W 270.00 feet; thence N 85°-08'-30" E 255.00 feet; thence N 53°-38'-30" E 92.00 feet; thence S 33°-32'-50" E 404.73 feet to the midpoint of a 75 foot radius cul-de-sac, said midpoint being the POINT OF TERMINATION.

PARCEL VII — Weber Construction Company, Owner
Commencing at the Northwest corner of Section 36, T1S, R3E, Lyndon Township, Washtenaw County, Michigan; thence S 01°-51'-30" E 238.00 feet along the West line of said Section and the centerline of Mester Road; thence N 88°-08'-30" E 455.00 feet to the POINT OF BEGINNING; thence N 03°-51'-30" W 270.00 feet; thence N 85°-08'-30" E 255.00 feet; thence N 06°-38'-30" E 182.00 feet; thence N 38°-23'-30" E 145.00 feet; thence N 86°-48'-50" E 139.96 feet to a point on the East line of the Southwest 1/4 of Section 25, T1S, R3E, thence S 02°-22'-10" E 355.76 feet along said East line to a point on the East line of the West 1/2 of the Northwest 1/4 of Section 36, T1S, R3E; thence S 02°-08'-10" E 339.50 feet along said East line; thence N 87°-48'-10" W 848.44 feet to the Point of Beginning, said parcel being a part of the Southwest 1/4 of the Southwest 1/4 of Section 25 and a part of the West 1/2 of the Northwest 1/4 of Section 36, T1S, R3E, Lyndon Township, Washtenaw County, Michigan, and containing 10.02 acres of land, more or less, being subject to easements and restrictions of record, if any. Also having and granting the rights of ingress and egress over a 66 foot wide strip of land having a centerline described as follows: Commencing at the Northwest corner of said Section 36, thence S 01°-51'-30" E 238.00 feet along the West line of said Section and the centerline of Mester Road to the POINT OF BEGINNING; thence N 88°-08'-30" E 455.00 feet; thence N 03°-51'-30" W 270.00 feet; thence N 85°-08'-30" E 255.00 feet; thence N 53°-38'-30" E 92.00 feet; thence N 06°-38'-30" E 182.00 feet; thence N 38°-23'-30" E 145.00 feet; thence N 86°-48'-50" E 139.96 feet to the POINT OF TERMINATION. Also having and granting the rights of ingress and egress over a 66 foot wide strip of land having a centerline described as follows: Commencing at the Northwest corner of said section 36, thence S 01°-51'-30" E 238.00 feet along the West line of said section and the centerline of Mester Road to the POINT OF BEGINNING; thence N 88°-08'-30" E 455.00 feet; thence N 03°-51'-30" W 270.00 feet; thence N 85°-08'-30" E 255.00 feet; thence N 53°-38'-30" E 92.00 feet; thence N 06°-38'-30" E 182.00 feet; thence N 38°-23'-30" E 145.00 feet; thence N 86°-48'-50" E 139.96 feet to the POINT OF TERMINATION.

PARCEL IX — Weber Construction Company, Owner
BEGINNING at the Southwest corner of Section 25, T1S, R3E, Lyndon Township, Washtenaw County, Michigan; thence N 02°-05'-30" W 355.02 feet along the West line of said Section and the centerline of Mester Road; thence N 84°-23'-00" E 288.75 feet; thence N 02°-05'-30" W 349.00 feet to the POINT OF BEGINNING; thence continuing N 02°-05'-30" W 608.00 feet to a point on the North line of the Southwest 1/4 of the Southwest 1/4 of said Section; thence N 84°-23'-00" E 430.00 feet along said North line; thence S 02°-05'-30" E 501.00 feet; thence S 62°-47'-10" E 364.64 feet; thence S 02°-22'-10" E 250.00 feet; thence S 86°-18'-50" W 139.96 feet; thence S 38°-23'-30" W 145.00 feet; thence N 53°-38'-30" W 656.54 feet to the Point of Beginning, said parcel being a part of the Southwest 1/4 of the Southwest 1/4 of Section 25, T1S, R3E, Lyndon Township, Washtenaw County, Michigan, and containing 10.56 acres of land, more or less, being subject to easements and restrictions of record, if any. Also having and granting the rights of ingress and egress over a 66 foot wide strip of land having a centerline described as follows: Commencing at the Northwest corner of Section 36, T1S, R3E, Lyndon Township, Washtenaw County, Michigan; thence S 01°-51'-30" E 238.00 feet along the West line of said Section and the centerline of Mester Road to the POINT OF BEGINNING; thence N 88°-08'-30" E 455.00 feet; thence N 03°-51'-30" W 270.00 feet; thence N 85°-08'-30" E 255.00 feet; thence N 53°-38'-30" E 92.00 feet; thence N 06°-38'-30" E 182.00 feet; thence N 38°-23'-30" E 145.00 feet; thence N 86°-48'-50" E 139.96 feet to the POINT OF TERMINATION.

PARCEL X — Mr. and Mrs. Kenneth Coleman, Jr., Owner
Commencing at the Southwest corner of Section 25, T1S, R3E, Lyndon Township, Washtenaw County, Michigan; thence N 02°-05'-30" W 355.02 feet along the West line of said Section and the centerline of Mester Road; thence N 84°-23'-00" E 288.75 feet; thence N 02°-05'-30" W 349.00 feet to a point on the North line of the Southwest 1/4 of the Southwest 1/4 of said Section; thence N 84°-23'-00" E 430.00 feet along said North line to the POINT OF BEGINNING; thence continuing N 84°-23'-00" E 575.62 feet to a point on the East line of the Southwest 1/4 of the Southwest 1/4 of said Section; thence S 02°-22'-10" E 355.76 feet along said East line; thence S 86°-18'-50" W 260.00 feet; thence N 02°-22'-10" W 250.00 feet; thence N 62°-47'-10" W 364.64 feet; thence N 02°-05'-30" W 501.00 feet to the Point of Beginning, said parcel being part of the Southwest 1/4 of the Southwest 1/4 of Section 25, T1S, R3E, Lyndon Township, Washtenaw County, Michigan, and containing 10.05 acres of land, more or less, being subject to easements and restrictions of record, if any. Also having and granting the rights of ingress and egress over a 66 foot wide strip of land having a centerline described as follows: Commencing at the Northwest corner of Section 36, T1S, R3E, Lyndon Township, Washtenaw County, Michigan; thence S 01°-51'-30" E 238.00 feet along the West line of said Section and the centerline of Mester Road to the POINT OF BEGINNING; thence N 88°-08'-30" E 455.00 feet; thence N 03°-51'-30" W 270.00 feet; thence N 85°-08'-30" E 255.00 feet; thence N 53°-38'-30" E 92.00 feet; thence N 06°-38'-30" E 182.00 feet; thence N 38°-23'-30" E 145.00 feet; thence N 86°-48'-50" E 139.96 feet to the POINT OF TERMINATION.

The within amendment shall be effective thirty (30) days from the date of this publication.

All remaining provisions of the Lyndon Township Zoning Ordinance and Map, and amendments thereto, not inconsistent with the above, be and the same are hereby ratified and reaffirmed.

State of Michigan
County of Washtenaw, ss:

I, CARLA W. CHERRY, Clerk of Lyndon Township, do hereby certify that the foregoing amendment to the Lyndon Township Zoning Ordinance was adopted at a regular meeting of the Lyndon Township Board held on the 21st day of February, 1978, by the following roll call vote: Ayes 5; Nays 0.

LYNDON TOWNSHIP

Carla W. Cherry, Clerk



INVITATIONS or ANNOUNCEMENTS . . .

Let us provide you with the very finest printed or engraved invitations and announcements. Make certain that your wedding stationery is of top quality and conforms to correct social requirements. We can advise you on these important details.

THE CHELSEA STANDARD

Social Printing Department
300 N. MAIN ST. PHONE 475-1371

KEN OSBORNE INSULATION CONTRACTOR

- ★ Blown in side walls and attic.
- ★ R = 4.17 per inch.
- ★ Resists fire and moisture.
- ★ Lightweight.
- ★ Meets Federal Specification HH-1-515.
- ★ This insulation made from 100% wood fibres.

KEEP COOL & SAVE FUEL. DON'T WAIT TOO LONG, IT'LL COST MORE LATER.

35 years in the building and insulation business in this area.

KEN OSBORNE

Ph. (517) 851-7497
ALUMINUM STORM WINDOWS AND DOORS



PIANO SOLOISTS: These five Beach Middle school piano soloists returned from last Saturday's District 12 Junior High School Solo and Ensemble Festival with Division I ratings, or the highest honor possible in the annual competition. In order to enter the piano solo event, each of the five was required to be a junior high band or orchestra member. From left, are Katie Ullman, Marie Sullivan, Diane Barels, Karla Troutman and Chids Thornton.

Volleyballers Lose All Three Contests

Although Chelsea High's varsity volleyball squad lost all three of its contests this past week, the team played its best offensive and defensive match of the season in the first of the three contests and followed that performance with a showing of excellent team improvement in the two remaining competitions.

Chelsea traveled to Grass Lake Wednesday, Feb. 15, for a match Chelsea Coach Walt Keppler described as "aggressive from whistle to whistle."

In the first game, Chelsea led the attack with some strong serving by Diane Ottomano (8 points) before slipping to a 13-15 loss in the finishing stretch. However, the Bulldogs toughened up their lines in the second game of the match to win, 13-12.

In the third and deciding game of the series, Grass Lake jumped out to a quick 7-1 lead, but Chelsea counterattacked to narrow the gap to 9-12. Then, a strong serving performance by Grass Lake in the ensuing minutes of the game dashed Chelsea's hopes for a win and left the Bulldogs on the bottom of the 15-9 decision.

There is no way one could single out any member of the team for either offensive or defensive honors in the match," Coach Keppler said. "All played well enough to deserve them."

Scoring for Chelsea were Diane Ottomano with 11 points, Sue Gersler with 10, Captain Kathy Stark with 6, Mary Jo Eisele with 4; Michelle Sarbach with 3; and Nancy Knott also with 3.

The Bulldogs returned to action last Friday only to suffer defeat at the hands of Lincoln. It was Lincoln's first match victory of the year.

Chelsea was only in the first game for a short time and was then blown out of the contest as Lincoln shot from 4 to 15 points, while the Bulldogs crept from 3 to 6 points.

In the second game, the Bulldogs returned to the form they had exhibited earlier in the week against Grass Lake and crushed Lincoln, 15-11.

"Lincoln didn't make it easy though as they tied the game at

11-11 before we finally pulled it out," Coach Keppler said.

In the third and final game of the match, Lincoln's server exploded for nine consecutive points with Chelsea unable to break the scoring streak. But when Chelsea finally took possession of the ball, Bulldog Captain Kathy Stark came up with seven straight points of her own to make the score 7-9.

Unfortunately, that was the only offense the Bulldogs could generate in the game and they were topped, 7-15.

Offensive player of the match was Denise Robbins with 12 points while defensive honors went to Ma Jo (Charlie Hussle) Eisele.

Chelsea then took on Stockbridge in a rematch Monday for the third contest of the week. Again the results left the Bulldogs empty-handed as Stockbridge took the match in a minimum, 15-6, 15-5.

According to Coach Keppler, part of Chelsea's problem was the one-sided officiating the team encountered which gave Stockbridge an unfair advantage, but poor playing also plagued the team.

The Bulldogs played in spurts with each game tight in the beginning and at the end, but stopped in the middle.

Denise Robbins was again named offensive player of the match. Michelle Sarbach was awarded defensive honors.

Chelsea's next game will be at home today, Feb. 23, 4 p.m., against Dexter.

Break-in Reported at Thompson's

An unknown thief or thieves forced his or their way into Thompson's Pizza, 20700 Old US-12, sometime early last Thursday morning and absconded with approximately \$700 worth of property and cash, according to Chelsea Police Department reports.

The theft was discovered by Donald Thompson, owner of the business, when he arrived at the establishment at about 8:55 a.m. Thursday.

Taken from the pizzeria were a new 27-inch color television set valued at \$500, \$50 in change from the juke box, \$80 in change from the cigarette machine, and 300 packs of cigarettes, the brands of which were mixed.

Police said the burglar gained entry by jimmying the lock on a rear door of the business.

No suspects have been named in the case which is still under investigation.

Manchester Junior Symphony Receives \$930 State Grant

A grant of \$930 to the Manchester Junior Symphony was announced by Representative Mike Conlin (R-23rd District).

The grant comes from the Michigan Council for the Arts which receives its funds for such grants from the state legislature, the National Endowment for the Arts and private contributions.

This grant has been awarded to the Manchester Junior Symphony to assist it in its development.

Four concerts by the symphony have been scheduled and performances have also been planned for student assemblies in the Manchester schools.

HONOR ROLL CORRECTION

In publishing the names of students on the Beach Middle School Honor Roll for the second marking period, the fact that 7th-grade honor student Daniel Klemer earned all A's during the period was inadvertently omitted from the honor roll list which appeared on page 4 of the Feb. 16 issue of The Standard.

District Court Proceedings

Week of Feb. 14-20

Elizabeth Chamberlain pled guilty to charges of driving with license suspended and speeding. She was sentenced to pay fines and costs of \$109 and to three days in jail, or to 15 days in jail.

Lawrence Guenther pled guilty to reduced charges of impaired driving. Fines and costs, \$250.

David A. Wood pled guilty to charges of impaired driving and making an illegal right turn on a red light. He was sentenced to pay fines and costs of \$275 or to 30 days in jail.

Bradley Loftgren pled guilty to charges of larceny of gas. Fines and costs, \$50.

Gerald F. Linke pled guilty to reduced charges of impaired driving. He was sentenced to pay fines and costs of \$250, or 30 days in jail.

Alberta Roby pled guilty to reduced charges of impaired driving. Fines and costs, \$250.

Charles Walshkey pled guilty to charges of driving with license suspended. He was sentenced to pay fines and costs of \$50 and to three days in jail, or to 30 days in jail.

George Barrett pled guilty to charges of driving with license suspended. He was sentenced to three days in jail suspended.

David A. Freeman was found guilty on charges of speeding. Fines and costs, \$35.

Judy K. McMillan was sentenced to pay fines and costs of \$250 and to one year probation on charges of impaired driving.

Marvin Ferguson pled guilty to charges of violating the basic speed law with an accident resulting. Fines and costs, \$35.

Jimmie H. Kennedy was sentenced to pay fines and costs of \$100, to pay restitution costs of \$158.50, and to six months probation on charges of assault and battery.

Jerry D. LaFontaine pled guilty to charges of transporting open intoxicants in a motor vehicle. He was sentenced to pay fines and costs of \$35, and to three days on the Washtenaw County Sheriff's Department work program.

Mario Trevino was sentenced to pay fines and costs of \$50 on charges of disorderly person.

Nancy L. Hole pled guilty to charges of possession of alcohol at a beach. Fines and costs, \$35.

Edwin L. Barko pled guilty to charges of speeding. Fines and costs, \$25.

Robert C. Stevens was found guilty on charges of transporting open intoxicants in a motor vehicle.

Ronald L. Jones was sentenced to pay fines and costs of \$350 and to 30 days in jail, or to 90 days in jail on charges of driving under the influence of liquor.

Gary Marriott was found guilty on charges of reckless driving. He was sentenced to pay fines and costs of \$100, to six months probation, and to 10 days on the probation department work program.

Daniel A. Magret was found guilty on charges of disregarding a railroad crossing signal. Fines and costs, \$75.

Mario Trevino was found guilty on charges of disorderly person. He was sentenced to pay fines and costs of \$100 and to six months probation.

Mark Grammatico pled guilty to charges of failing to stop upon a police signal. He will be sentenced April 3.

Claude McClain pled guilty to charges of driving with license suspended. He was sentenced to pay fines and costs of \$75 and to three days in jail suspended.

Jeffrey K. Fisher pled guilty to charges of possession of alcohol at a beach. Fines and costs, \$35.

Joseph D. Wimple pled guilty to charges of possession of open intoxicants in a motor vehicle. He was sentenced to pay fines and costs of \$35 and to three days on the Washtenaw County Sheriff's Department work program.

Steven R. Smith pled nolo contendere to charges of drunk and disorderly. Fines and costs, \$20.

Michael Rofalko pled guilty to charges of speeding and illegal possession of open intoxicants. He was sentenced to pay fines and costs of \$60, and to three days on the Saline Police Department work program.

Ronald D. Finch was found guilty on charges of impaired driving. Fines and costs, \$200.

David C. Schumacher was bound over to Circuit Court on charges of driving under the influence of liquor. He will be arraigned Feb. 23.

Frank Von Broda, Jr., was bound over to Circuit Court on charges of carrying a concealed weapon. He will be arraigned March 16.

Richard J. Dennis pled guilty to charges of possession of marijuana. He was sentenced to pay fines and costs of \$500, to two years probation, and to one year in jail suspended.

Daniel M. Hoy was sentenced to pay fines and costs of \$350 and was referred to the Alcohol Safety Action Program on charges of impaired driving.

Monty Garrison appeared in court on charges of never acquiring a Michigan operator's license. The case was dismissed on costs of \$50.

Gary S. Uphaus appeared in court on charges of disobeying a red light. The case was dismissed on costs of \$25.

Nelson Ehinger, Jr., was found guilty on charges of speeding. Fines and costs, \$25.

Robert Gregory was sentenced to pay fines and costs of \$50 on charges of careless driving with an accident resulting.

Wendy Buehler pled guilty to charges of failing to yield with an accident resulting. Fines and costs, \$25.

James Wadkins pled guilty to charges of careless driving with an accident resulting. Fines and costs, \$50.

Betty F. Davey pled guilty to charges of driving without an operator's license on her person and speeding. Fines and costs, \$35.

Alva Daniels pled guilty to charges of driving under the influence of liquor and driving without a valid operator's license on her person. She was sentenced to pay fines and costs of \$300, to one year probation, and was referred to the Alcohol Safety Action Program.

Kenneth Duane Valentine was found guilty on charges of careless driving. Fines and costs, \$35.

Michael R. Galasso pled guilty to charges of operating an unregistered snowmobile. Fines and costs, \$17.

CALL OR STOP IN

CHELSEA GLASS, INC.

WORKMANSHIP AND MATERIALS FULLY GUARANTEED

Open Daily 8 a.m. to 5 p.m.; Sat., 8 a.m. to 1 p.m.

140 W. Middle, Chelsea Phone (313) 475-8667

WE REPAIR AND REPLACE:

- ★ STORE FRONTS
- ★ FURNITURE TOPS
- ★ SHOWER DOORS
- ★ THERMOPANES
- ★ AUTO GLASS - Including Windshields

Free Pick-up and delivery on auto work.

Storm Door & Window Reglazing & Screens

COMMERCIAL BUILDINGS OR RESIDENTIAL

PROMPT SERVICE REASONABLE PRICES

DEXTER TOWNSHIP BOARD OF REVIEW

Notice is hereby given to all persons liable to assessment for taxes in the

TOWNSHIP OF DEXTER

County of Washtenaw, State of Michigan

That the Assessment Roll of said Township as prepared by the undersigned will be reviewed by the Board of Review on March 7, 1978.

Appeals and conferences with taxpayers will be heard at

DEXTER TOWNSHIP HALL

6880 Dexter-Pinckney Road, on

MONDAY and TUESDAY, MARCH 13-14, 1978

at which time the Board of Review will be in session from 9 a.m. to 4 p.m. of said days. Upon request of any person who is assessed on said tax roll or of his or her agent and upon sufficient cause being shown, said Board of Review will correct the assessment as to such property in such manner as will in their judgment make the valuation just and equal.

Such assessment tax roll as reviewed and approved by said Board of Review will be the assessment roll of said Township of Dexter for the year 1978.

The County Board of Commissioners of Washtenaw County has proposed the following starting ratios for Dexter Township for the year 1978: Real Property Ratio 23, Factor 1.14; Personal Property Ratio 50.01, Factor 1.00.

JOHN TANDY, Supervisor

Feb. 23, 1978.

GIRL SCOUTS

TROOP 385—

Last week we had a nurse talk about first aid at our meeting. Mrs. Myers told us a lot about first aid care and which things should be in our first aid box. Thank you Mrs. Myers.

Bree Michelsen.

STOP. DETOUR

Unless you're crazy about the drive, there's no real reason to drive into Detroit looking for new car bargains. Rampy Chevrolet in Ann Arbor is a lot closer and you'll get the same low prices you find in Detroit — maybe even lower. At Rampy you'll also find the kind of careful, competent, come again service you expect from small town folks who know their neighbors.

You see, Rampy's not just the biggest Chevrolet dealer in Washtenaw County, he's got the biggest dealership of any kind in the country. That means that he's governed by the same kind of high volume economics you've been driving all the way into Detroit to find.

On the other hand, Ann Arbor is a town where people do know each other. Word gets around. And the word is that Rampy gives good service after the sale. As a matter of fact, Rampy's service department has been used as a model for training other Chevrolet dealers.

Isn't it time you took a detour? Before you drive all the way into Detroit looking for a new car... stop at Rampy. We don't think you'll go any further.

Rampy CHEVROLET

CORNER JACKSON & WAGNER RDS., ANN ARBOR, PHONE 663-3321

Rampy sponsors the Huron Valley Corvette Club. For information call 482-3303.

NOW ON TUESDAY NIGHTS

CHICKEN BUFFET

with our Famous Deep-Fried Chicken and SPECIAL BARBECUED CHICKEN also mashed potatoes and gravy, dressing, and salad bar. Serving from 4:30-9:00

at the CAPTAINS TABLE

8093 MAIN ST., DEXTER PH. 426-3811

Faster gains from better FEEDS

Calfes get growing and gaining faster, on our balanced, fortified Galf Feed... enriched with needed vitamins, minerals.

Complete feeding rations for all your livestock, poultry.

FARMERS' SUPPLY CO.

PHONE 475-1777

To Assure A Good Attendance! Advertise Your Auction in The Standard

+ AREA DEATHS +

Samuel B. Youngblood

Methodist Home Resident
Dies Sunday at Age 98

Samuel B. Youngblood, 98, a Chelsea United Methodist Retirement Home resident, died Sunday, Feb. 19, at the Methodist Home. Born March 7, 1879, in Tarpon Springs, Fla., he was the son of Robert T. and Mary Stephens Youngblood.

He married Hannah MacAllister on May 14, 1907. She preceded him in death on Aug. 12, 1957. Mr. Youngblood moved to the Methodist Home on Jan. 1, 1959.

He is survived by one sister, Mrs. A. C. McNichol of Tarpon Springs, Fla.

Funeral services were held Wednesday, Feb. 22, 1 p.m., at the Chelsea United Methodist Retirement Home with the Rev. Marvin McCallum officiating. Burial followed in Oakland Hills Memorial Gardens, Novi.

Arrangements were by Staffar Funeral Home.

Funeral services were held Friday, Feb. 17, at Westminster Memorial Park, Westminster, Calif.

David E. Aldrich

Dies Suddenly at
Home in California

David E. Aldrich, 51, of Westminster, Calif., died suddenly at his home Thursday, Feb. 9 from injuries suffered in an attack by an unknown assailant. Born Feb. 14, 1946, in Chelsea, he was the son of Mr. and Mrs. Gale Aldrich of 116 Buchanan St.

After graduating from Chelsea High school, Mr. Aldrich entered the U.S. Navy and served for four years on the USS Bennington.

On Jan. 14, 1966, he married Mary Owens of Reading, Calif. She survives.

Other survivors include two sons, David, 11, and Tim, 6, both of Westminster, Calif.; his parents, Mr. and Mrs. Gale Aldrich; three sisters, Mrs. Delmer (Karen) Wireman of Chelsea, Mrs. John (Carol) Wiley of Austin, Tex., and Mrs. Arnold (Pat) Coley of Crockett, Tex.; and several aunts, uncles, cousins, nieces and nephews.

Funeral services were held Friday, Feb. 17, at Westminster Memorial Park, Westminster, Calif.

A young couple was taken aback by the high price on a new compact model car. "Why so much for a small car?" the wife queried. "Well," said the salesman, "If you want economy, you're going to have to pay for it."

Robert L. Oesterle

Dies Suddenly at
His Residence Feb. 13

Robert L. Oesterle, 49, of 118 E. Middle St., died suddenly at his residence Sunday, Feb. 12. Born Aug. 22, 1928, in Chelsea, he was the son of Frederick and Theresa Gritzner Oesterle.

For several years, Mr. Oesterle had been employed in construction work in the area.

Survivors include four brothers, Roy, Frederick and Ray, all of Chelsea, and Walter of Pinckney; four sisters, Mrs. Gladys Hilborn of Jackson, Mrs. Margaret Givvan of Ann Arbor, Dorothy Oesterle of Chelsea, and Mrs. Ben (Ruth) Zaidinski of Flint. He was preceded in death by two brothers, Paul in 1923, and Howard in 1973.

Cremation has taken place. Memorial services were conducted Saturday, Feb. 18, 1 p.m., at Staffar Funeral Home with the Rev. James L. Hynes officiating.

Mrs. Harold Craven

Former Chelsea Resident
Dies Feb. 15 in California

Adrian E. Craven, 84, of Los Alamitos, Calif., and formerly of Chelsea, died Feb. 15 at Katella Manor, Los Alamitos. She was born Aug. 18, 1893.

She married Harold L. Craven on Sept. 21, 1911. He preceded her in death on Nov. 20, 1965.

Survivors include two sons, Dalton of Bruce Crossing, and Hubert of Lakewood, Calif.

Graveside services were conducted Monday, Feb. 20, 1 p.m., at Oak Grove Cemetery, Chelsea, with the Rev. Ralph D. Harper officiating. Burial followed.

Arrangements were by Staffar Funeral Home.

Pvt. Marc Jarvis

Assigned As Radar
Repairman in Germany

Private Marc A. Jarvis, son of Dr. and Mrs. Walter F. Jarvis, 105 Blind Lake, Gregory, recently was assigned as a radar repairman with the 8th Infantry Division in Mannheim, Germany.

Pvt. Jarvis entered the Army in December 1976.

The private attended Eastern Michigan University at Ypsilanti and Washtenaw Community College in Ann Arbor.



DIVISION I ORCHESTRA ENSEMBLE: Members of Beach Middle school's only Division I-rated orchestra ensemble, and members of a Division I woodwind trio pose together following their success in last Saturday's District 12 Junior High School Solo and Ensemble Festival held at Monroe High school. Seated in the front, from left, are 7th graders Deann Colvia and Russell Harris, who earned

top honors in the festival with a cello duet, while standing in the back row, from left, are 7th graders Melonie Lee, oboe, Kathy Degener, flute, and Marie Sullivan, clarinet. Kathy Degener also teamed up with fellow flutists, Lisa Hurd and Tracy Borton (both not pictured), to earn a Division I rating as a flute trio.

SCHOOL LUNCH MENU

Week of Feb. 27-March 3
Monday—Meat loaf, cook's potatoes, wax beans, bread and butter, ice cream and cookie, milk.
Tuesday—Tacos with lettuce and cheese, vegetables, potato sticks, fruit mix, milk.
Wednesday—Submarines with sauce, tomato soup, crackers, potato chips, fruit cocktail cake, milk.
Thursday—Savory beef over mashed potatoes, vegetable, bread and butter, Jell-O cubes, milk.
Friday—Macaroni and cheese, slice of meat, peas, bread and butter, chocolate eclair, milk.

Fluoride Program Registration Begins

Topical fluoride applications will again be offered this year to children who have not been protected with fluoridated water under a special program to be sponsored by the Chelsea Jaycee Auxiliary. Children who have lived in Chelsea for a number of years have been drinking fluoridated water, have shown a considerable reduction in tooth decay, and will not receive further benefit from participation in the Auxiliary program.

However, those urged to register for fluoride treatments are pre-schoolers (age 3 and older), second, fifth, and eighth graders who do not drink from the Chelsea water supply; and eighth graders who have lived in Chelsea less than seven years, fifth graders who have lived here less than five years, and pre-schoolers and second graders with less than three years residence in the city.

Each child who participates in the fluoride program will be expected to attend a series of four clinics to be scheduled one or more days apart. Each participating child will be given a toothbrush and brushing instructions at one of the clinics.

Topical fluoride applications prevent 40 percent of new tooth decay but should be supplemented with regular visits to a dentist, good toothbrushing habits, and avoidance of sugary foods between meals.

The fluoride treatment program will be conducted during the summer according to a schedule to be announced in May. An appointment card will be mailed to parents 2-3 weeks prior to a child's appointments.

A fee of \$4.75 per child will be charged for the program, but parents unable to finance the cost may call Ginny Wheaton at 475-7412 to discuss a possible fee adjustment.

Parents wishing to register their child for fluoride treatments should fill out the registration form contained in today's issue of The Standard, and return it with the \$4.75 registration fee to their child's teacher before March

3. No refunds will be given after March 5, and any registrations after March 5 will be on a first come basis if any program openings exist.

After-Inventory Clearance

SALE

Assorted group of

TURTLE NECKS - CREW NECKS

LONG SLEEVE SPORT SHIRTS

STRIETER'S MEN'S WEAR

Since 1914

THE SALE OF THE YEAR!

SPECIAL PLYMOUTH VOLARE VALUE PACKAGES. SAVE UP TO \$250.



Volares shown with Value Bonus Package and optional custom exteriors.

INTRODUCING THE NEW PLYMOUTH FURY GRAN COUPE. SAVE \$250.

A full size savings is yours on this special Fury. \$660 worth of options for \$430. Including: halo vinyl roof, reclining buckets, much more. A savings of \$250 off the sticker price!

Fury Gran Coupe Package requires optional V-8 engine, power steering and automatic transmission.



These special Volares, 2-door, 4-door, and America's No. 1 selling wagon over the past two years, come with up to \$663 worth of popular options at a \$250 savings off the sticker price! Features like AM radio, digital clock, many others. What a Volare value!

*Value Bonus Package requires optional power steering.



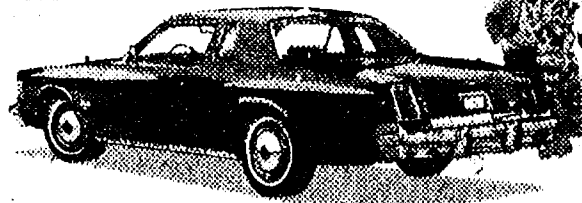
78 Plymouth Fury 2-Door Coupe

ALSO SEE THESE OTHER GREAT VALUES

CHRYSLER CORDOBA 'S'

\$5550*

*Manufacturer's Suggested Retail Price excluding taxes and destination charges.



78 Chrysler Cordoba

CHRYSLER LeBARON 'S'

\$5020*

*Manufacturer's Suggested Retail Price excluding taxes and destination charges.



78 Chrysler LeBaron

CAR OF THE YEAR! NEW PLYMOUTH HORIZON.

38 / 25
MPG HWY / MPG CITY

*EPA mileage estimates, based on Horizon's manual transmission. Your actual mileage may differ depending on your driving habits, your car's condition, and its optional equipment.



1978 Plymouth Horizon

\$3706*

*Manufacturer's Suggested Retail Price excluding taxes and destination charges.

IT'S A GREAT TIME TO BUY AT YOUR CHRYSLER-PLYMOUTH DEALERS!

VILLAGE MOTOR SALES, INC.

1185 MANCHESTER ROAD

CHELSEA, MICHIGAN

James G. Aaron Joins Marine Unit Based on Okinawa

Marine Lance Corporal James G. Aaron, son of William A. Aaron of Chelsea, has reported for duty with 3rd Marine Division, on Okinawa.

He joined the Marine Corps in September 1976.

ANOTHER LABRO FIRST

The first federal legislation designating Labor Day a national holiday was passed in 1894, according to "Labor Firsts in America," issued by the U.S. Department of Labor.

FARLEY CONSTRUCTION

522 HOWARD RD.
ADDITIONS - REMODELING
REPAIRS
NEW HOMES

475-8265 or 475-7643

SODIUM FLUORIDE APPLICATION FORM

Child's Name (last) (first) (initial)

School _____ Grade _____ Age _____

Dear Parent:

Sodium fluoride applied to the teeth to reduce the amount of new tooth decay, is now available through a community dental program. The treatment has no effect on decay already present and is not a substitute for regular care by your dentist, but is valuable for the partial control of dental decay.

If you wish your child to receive this service, please complete and return this form and \$4.75 to Mrs. Ginny Wheaton, 13374 Old US-12, Chelsea, postmarked no later than March 3, 1978. Make checks payable to Chelsea Summer Fluoride Treatment.

(Signature of parent or guardian)

(Mailing address)

(City) (Zip Code)



Henry W. Block

**"If you use
the short
form, we do it
for less."**

If you qualify for the short form, we charge a very low price. The simpler the return, the less we charge. That's Reason No. 2 why you should let us do your taxes.

H&R BLOCK
THE INCOME TAX PEOPLE

105 S. MAIN ST., CHELSEA Ph. 475-2752

Our offices are open 9 a.m. to 6 p.m.

From now through March 5, 1978, GE has reduced its prices in varying amounts on these selected models, so you may get big savings.



GE Great Annual Red Tag Sale!

Save \$50

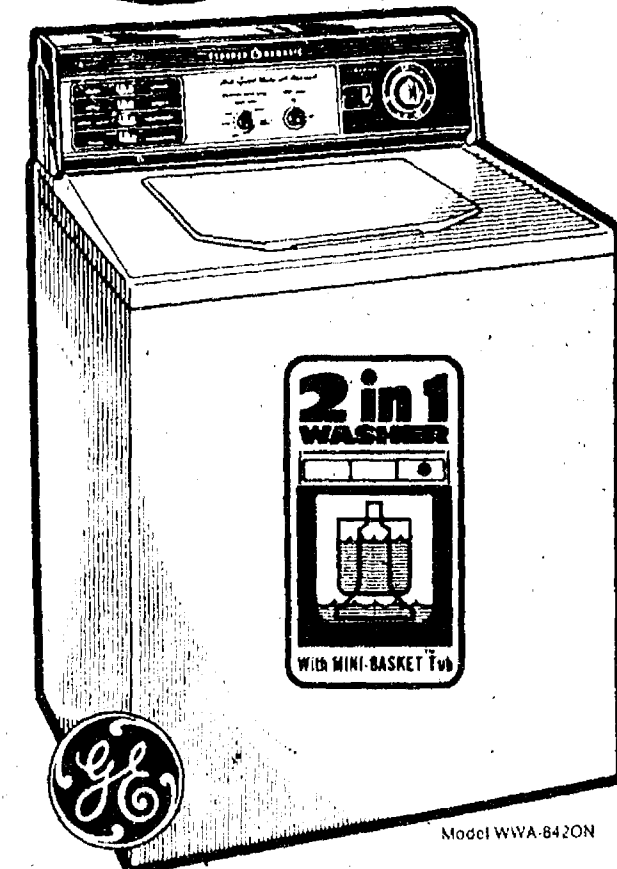
**GE Quality-Built,
Multi-Speed Washer
with Mini-Basket™ Tub
and Filter-Flo® System**

• Handles BIG loads — or small ones in the exclusive Mini-Basket Tub that saves water, detergent, and eliminates hand-wash of clothes and lint. • 4 Wash-and-Spin Speed Combinations • 4 Cycle Selections: Normal, Permanent Press, Automatic Soak & Mini-Quick • Variable Water Level Setting • Extra Rinse Setting

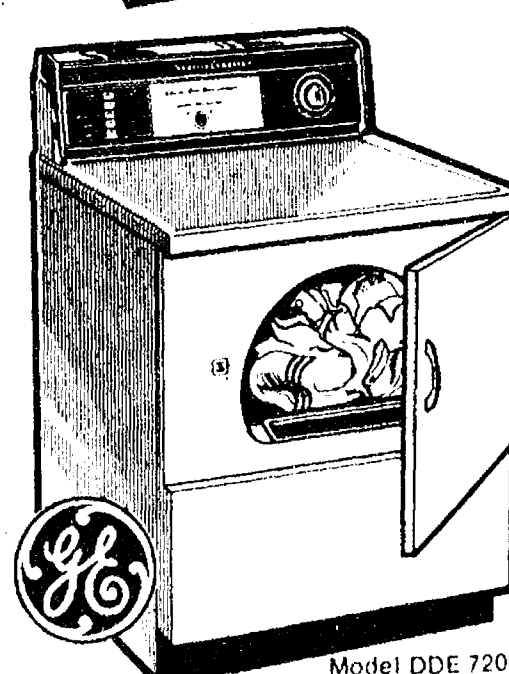
Regular Price \$399.00

Less "Red Tag" Discount \$50

YOU PAY ONLY \$349⁹⁵



Model W420N



Model DDE 7200N

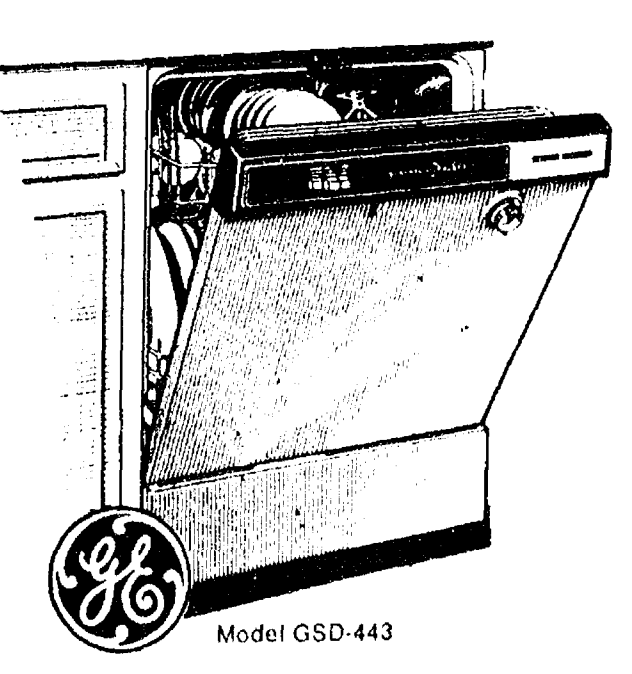
SAVE \$30

**GE Quality-Built Automatic Sensor
Control Dryer monitors temperature
and automatically ends cycle.
5 Cycles, 4 drying selections, Perm.
Press Extra Care feature.**

Regular Price \$269.00

Less "Red Tag" DISCOUNT \$30

**YOU PAY \$239⁹⁵
ONLY**



Model GSD-443

SAVE \$20

**GE Quality-Built, 3-Cycle Built-In
Dishwasher. Normal, Short Wash,
Rinse-&-Hold, 3-Level Wash Action.
Normal Energy Saver Cycle.
Soft Food Dispenser.**

Regular Price \$289.00

Less "Red Tag" DISCOUNT \$20

**YOU PAY \$269⁹⁵
ONLY**



HEYDLAUFF'S

113 N. Main St., Chelsea Ph. 475-1221



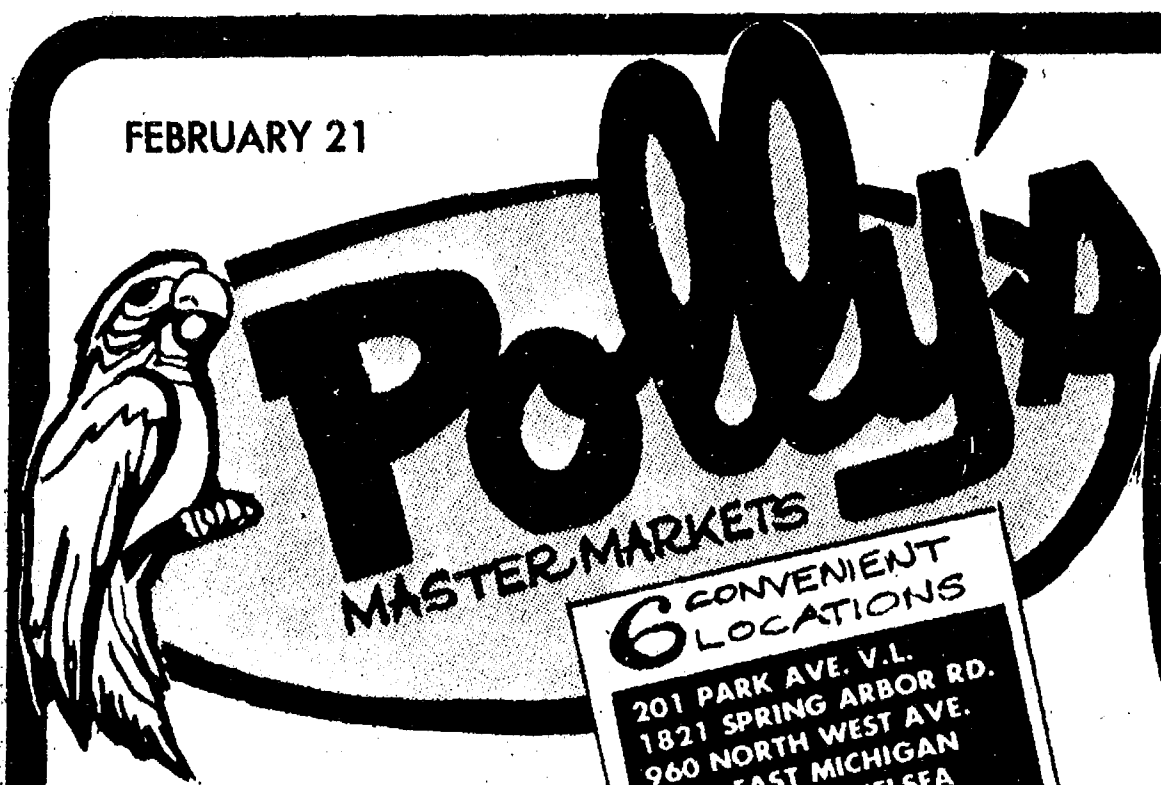


get to know us...
WE CAN HELP YOU SAVE ON YOUR FOOD BILL!

Open Daily 8 to 10
Sunday 9 to 9

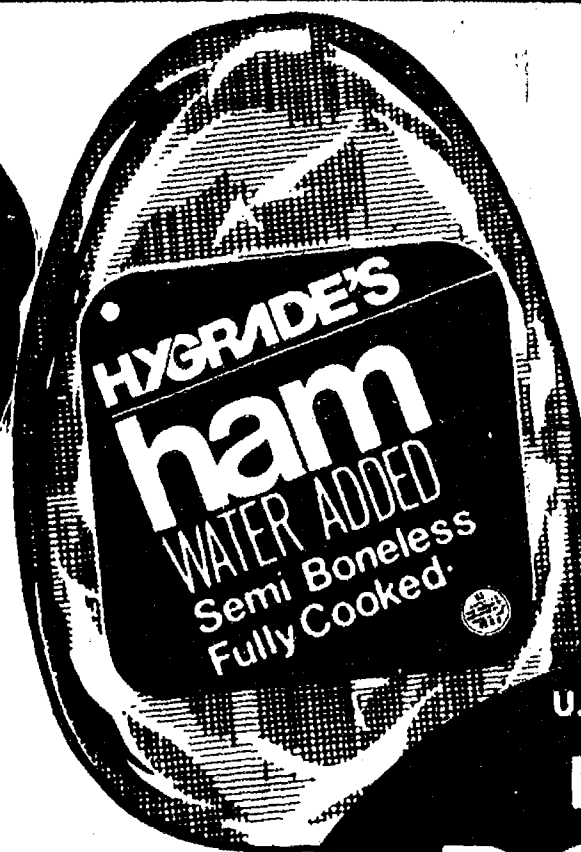
- ★ **QUALITY PRODUCE**
- ★ **QUALITY MEAT**
- ★ **COLD BEER, WINE, LIQUOR**
- ★ **LOTTERY TICKETS**
- ★ **SIDES OF BEEF**
- ★ **FRUIT BASKETS**
- ★ **DRY CLEANING**
- ★ **PHOTO PROCESSING**
- ★ **VARIETY AT LOW PRICES**

FEBRUARY 21



6 CONVENIENT LOCATIONS
201 PARK AVE. V.L.
1821 SPRING ARBOR RD.
960 NORTH WEST AVE.
1809 EAST MICHIGAN
1101 M-52, CHELSEA
3001 EAST MICHIGAN

WE RESERVE THE RIGHT TO
LIMIT ALL QUANTITIES TO
REASONABLE AMOUNTS



HYGRADE
HAM
WATER ADDED
SEMI-BONELESS

LB. **\$1.29**

HYGRADE
WEST VIRGINIA
BACON
LB. PKG. **\$1.39**

AGAR
CANNED
HAM
AGAR
HAM
PATTIES
5-LB. **\$8.59**
1-LB. CAN **\$1.49**

U.S.D.A. CHOICE BEEF
BONELESS
CHUCK ROAST
LB. **\$1.09**
U.S.D.A. CHOICE BEEF
BONELESS
ARM ROAST
LB. **\$1.39**



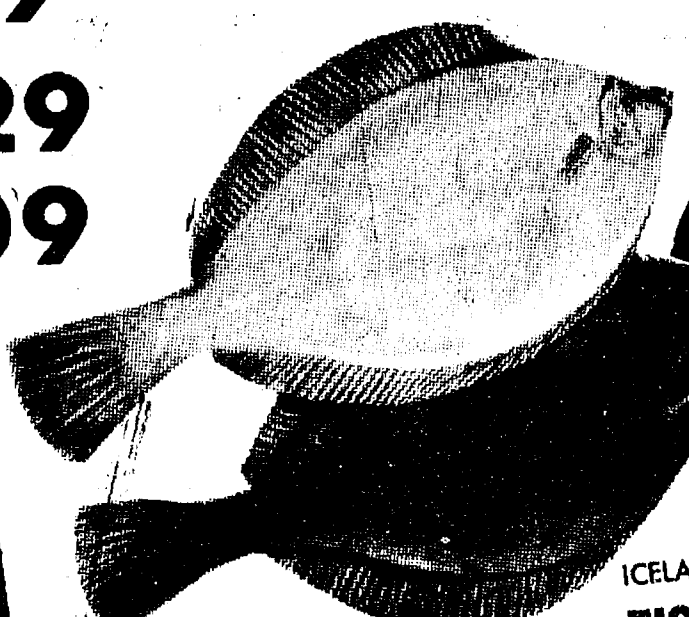
U.S.D.A. CHOICE BEEF
**BOTTOM
ROUND
ROAST**
LB. **\$1.49**



KING SOLOMON
**CORN BEEF
BRISKET** LB. **\$1.39**
U.S.D.A. CHOICE BEEF
STEW MEAT LB. **\$1.29**
U.S.D.A. CHOICE BEEF ROAST
EYE of ROUND LB. **\$1.99**
U.S.D.A. CHOICE BEEF
CUBE STEAK LB. **\$1.59**
U.S.D.A. CHOICE WHOLE BONE-IN
N.Y. STRIPS 12/14 Lb.-Avg. LB. **\$1.99**
CUT & WRAPPED FREE!

U.S.D.A. CHOICE
CHUCK STEAK LB. **79¢**
U.S.D.A. CHOICE BONELESS
CHUCK STEAK LB. **\$1.29**
U.S.D.A. CHOICE GROUND
BEEF CHUCK LB. **\$1.09**

U.S.D.A. CHOICE
SIRLOIN STEAK
LB. **\$1.69**
U.S.D.A. CHOICE
**SIRLOIN
TIP STEAK** LB. **\$1.69**
U.S.D.A. CHOICE
**SIRLOIN
TIP ROAST** LB. **\$1.59**



VARIETY OF
**FRESH
FISH**
AVAILABLE AT ALL
POLLY'S MEAT COUN-
TERS

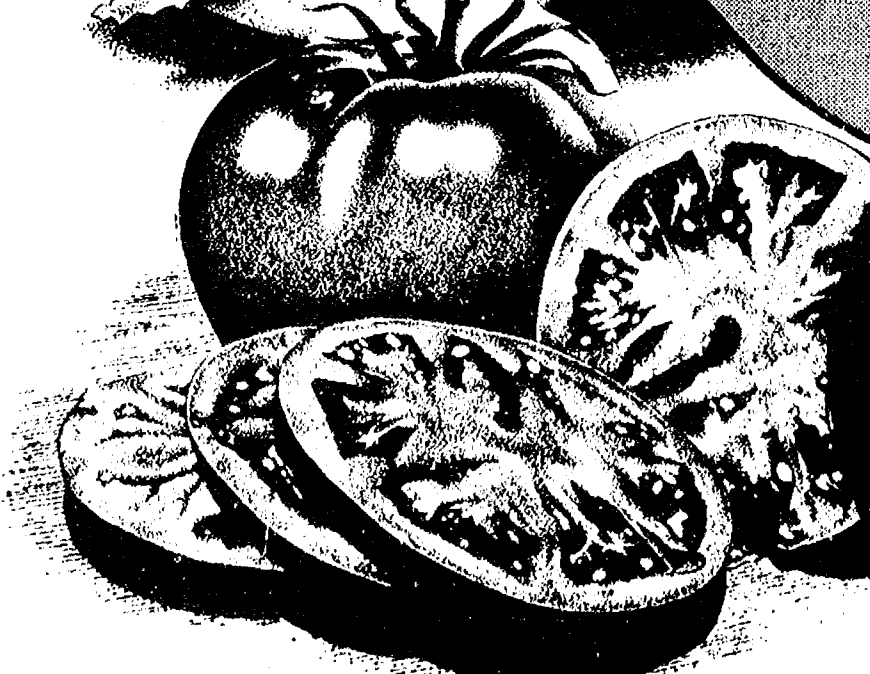
ICELANDIC
FISH n' BATTER LB. **\$1.49**
FRESH FROZEN
OCEAN PERCH LB. **\$1.49**

FRESH FARMER PEETS
PORK LIVER LB. **49¢**
FRESH FARMER PEETS
PORK KIDNEYS LB. **49¢**
FRESH FARMER PEETS
PORK HEARTS LB. **49¢**
FRESH PORK
NECK BONES LB. **49¢**

SAVE 1¢ w/in-store coupon
SCOT LAD
**SALAD
DRESSING**
32-oz.
JAR **73¢**



CALIFORNIA
**HEAD
LETTUCE**
2 for 79¢



VINE-RIPE
TOMATOES
8 for 69¢



CALIFORNIA
**NAVEL
ORANGES**
10 for 99¢
\$2.19
TEXAS RUBY RED
GRAPEFRUIT 18-LB. BAG



SAVE 2¢ w/in-store coupon
WISHBONE
SALAD DRESSINGS
Vitality, 1000 Island, French
16-oz. **79¢**

U.S. NO. 1 MICHIGAN
**McINTOSH
APPLES** 3-LB. BAG **69¢**
SAVE 30¢ w/ IN-STORE COUPON
**SUNMAID
RAISINS** 5-OZ. **69¢**



UNDERWOOD CHICKEN SPREAD 4 3/4-OZ. **49¢**

Del Monte 17-oz.
• CREAM STYLE CORN
 Del Monte 17-oz.
• WHOLE KERNEL CORN
 Del Monte 16-oz.
• MIXED VEGETABLES
 Del Monte 17-oz.
• SWEET PEAS

Your Choice 4 CANS for \$1

Del Monte 20-oz. **TOMATO CATSUP** 53¢
 Del Monte Cut or French **GREEN BEANS** 3 1/2-OZ. \$1
 Del Monte 29-oz. **PEAR HALVES** 65¢

Del Monte 30-oz. **FRUIT COCKTAIL** 59¢
 Del Monte 29-oz. **SLICED PEACHES** 59¢
 Del Monte 29-oz. **PEACH HALVES** 59¢

Polly's MASTER MARKETS

6 CONVENIENT LOCATIONS

201 PARK AVE. V.I.
 1821 SPRING ARBOR RD.
 960 NORTH WEST AVE.
 1809 EAST MICHIGAN
 1101 M-52, CHELSEA
 3001 EAST MICHIGAN

8-PAK 7-UP

16-OZ. N.R. **\$1.79**

NO DEPOSIT BOTTLES

SUNSHINE VANILLA WAFERS 11-OZ. **49¢**

SUNSHINE HI-HO CRACKERS 12-OZ. **59¢**

BUY 2 • SAVE 36¢ W/IN-STORE COUPON

GRAVY TRAIN 25-LB. **\$4.99**

SAVE \$1.40 W/IN-STORE COUPON

CHEER 171-OZ. **\$4.86**

50¢ OFF LABEL

TREET 12-OZ. **89¢**

SAVE 20¢ W/IN-STORE COUPON

DIAL 5-OZ. BARS **\$1**

SAVE 56¢ W/IN-STORE COUPON

HOLSUM COUNTRY STYLE	2 16-OZ. LOAVES	99¢
NUTWOOD FARM GLAZED DONUTS	14-OZ.	69¢
NUTWOOD FARMS OLD FASHION DONUTS	13-OZ.	49¢
NICKERSON OCEAN PERCH	1-LB.	\$1.19
HEARTLAND MAPLE SYRUP	24-OZ.	89¢
JIMMIES COOKIES PEANUT BUTTER	16-OZ.	89¢

KEN-L-RATION TENDER CHUNKS	20-LB.	\$5.99
MUSSELMAN APPLESAUCE	35-OZ.	69¢
10¢ OFF LABEL FREE n' SOFT	4 7/7-OZ.	69¢
FAMILY SIZE BORATEEM PLUS	84-OZ.	\$1.69
CHEF-BOY-AR-DEE TWIN PAK CHEESE PIZZA	29-OZ.	\$1.19
SAVE 14¢ W/IN-STORE COUPON JEFFY BAKING MIX	40-OZ.	59¢

BORDEN NON-DAIRY CHOCOLATE DRINK PLASTIC GALLON **\$1.09**

BORDEN REAL SOUR CREAM ONE-PINT **49¢**

BORDEN BUTTERMILK HALF GALLON **59¢**

BORDEN OLD FASHION ICE CREAM ROUND HALF-GALLON **\$1.29**

LADY BORDEN DELUXE QUARTS BORDEN YOGURT CUPS 6-PAK **88¢**

89¢

HOLLOW TREE COOKIE SALE

Keebler

CRACKER JACK ICE CREAM BAR **79¢**

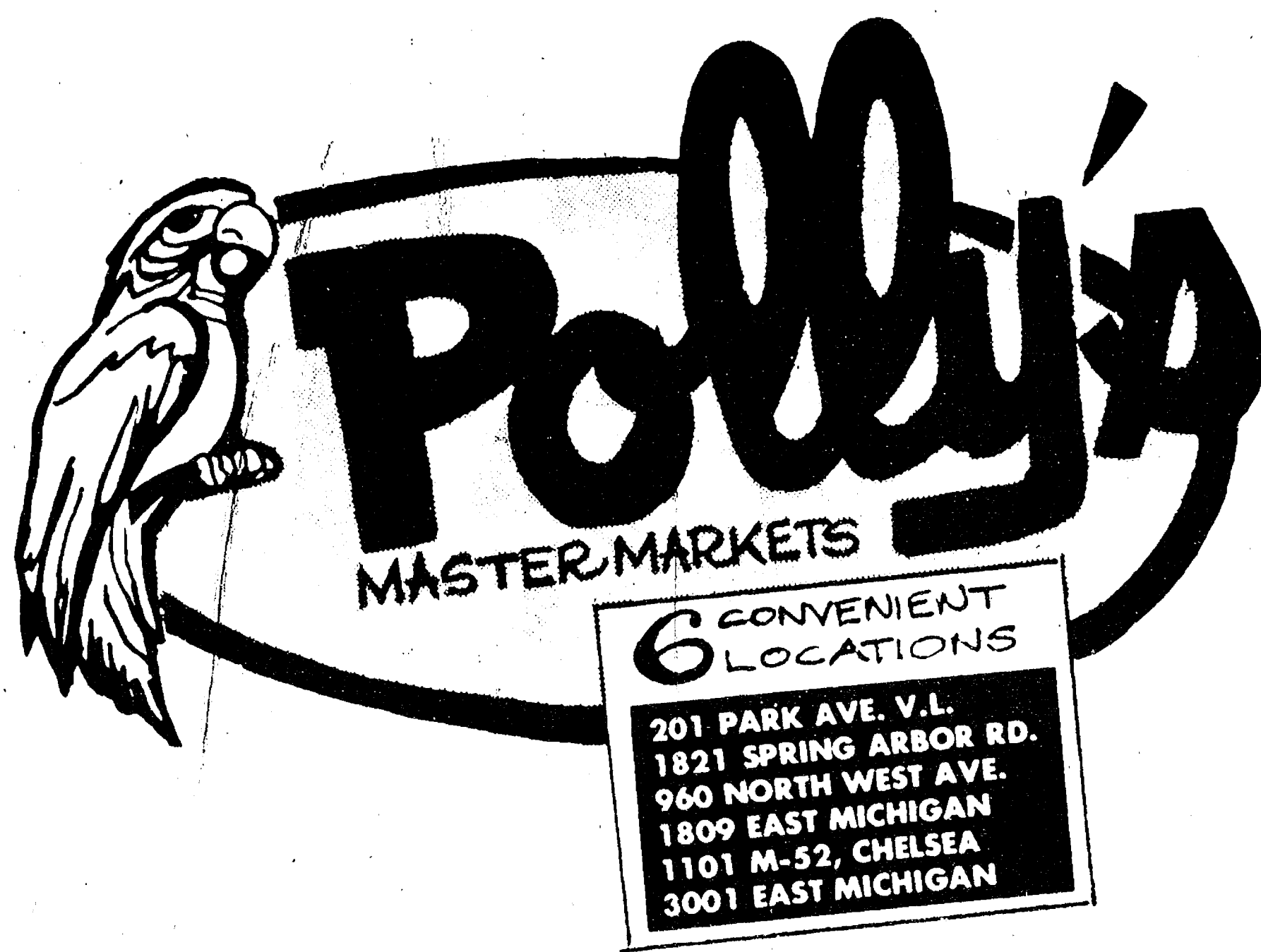
16-OZ. CLUB CRACKERS
14-OZ. CINNAMON CRISP
14-OZ. ELFWICH
16-OZ. PITTER PATTER
16-OZ. FRENCH VANILLA

Your Choice 79¢

<p>Save 30¢ w/IN-STORE COUPON</p> <p>LISTERMINT MOUTHWASH 24-OZ. \$1.59</p>	<p>Save \$1.14 w/IN-STORE COUPON</p> <p>EFFERDENT DENTURE CLEANSER 96-ct. \$1.99</p> <p>Save 20¢ w/IN-STORE COUPON</p> <p>BAYER ASPIRIN 200-ct. \$1.69</p>
<p>SCHICK INJECTOR TWIN BLADES 4-CT. 95¢</p>	<p>CREST Regular or Mint 5 oz. Tube \$1.19 Value 88¢</p> <p>SCOPE MOUTHWASH 12¢ Off Label 12 oz. — \$1.58 Value 95¢</p> <p>SECRET ROLL ON 1 1/2 oz. — \$1.56 Value \$1.29</p>
<p>STRIDEX MEDICATED PADS 42's — \$1.36 Value \$1.08</p>	<p>BRECK SHAMPOO 7 oz. — \$1.49 Value \$1.34</p> <p>BRECK CREME RINSE 7 oz. — \$1.76 Value \$1.34</p>
<p>BAYER CHILDREN'S 36 Tablets 39¢ 59¢ Value</p>	<p>OLD SPICE STICK 2 1/2 oz. 99¢ \$1.54 Value</p> <p>foamy 11 OZ. • REGULAR • MENTHOL • LEMON-LIME • SURF SPRAY \$1.18</p>
<p>COLGATE TOOTHPASTE 15¢ Off Label 7 oz. Tube 98¢ \$1.58 Value</p>	<p>NYQUIL NIGHTTIME COLD MEDICINE 10 oz. — \$3.49 Value \$2.29</p>
<p>JOHNSON'S DENTAL FLOSS 50 Yd \$1.19 Value \$1.07</p> <p>SOFF PUFFS 260's \$1.19 Value 87¢</p>	<p>VICKS COUGH SYRUP 3 oz. — \$1.59 Value \$1.43</p> <p>FORMULA 44-D 3 oz. — \$2.19 Value \$1.39</p> <p>VICKS VAPORUB 3 oz. — \$2.09 Value \$1.69</p>

Thank You

FOR SHOPPING AT...



WHERE WE ARE
HAPPY TO.....

save YOU MONEY!